



**Audi B8 Q5/SQ5 Rear Diffuser Kit**  
**Installation Instructions - [Click HERE to Shop](#)**



**Skill Level**  
**1 - Easy**  
**Basic Skills**  
**Required**



Proper service and repair procedures are vital to the safe, reliable operation of all motor vehicles as well as the personal safety of those performing the repairs. Standard safety procedures and precautions (including use of safety goggles and proper tools and equipment) should be followed at all times to eliminate the possibility of personal injury or improper service which could damage the vehicle or compromise its safety.

## INSTALLATION NOTES

- **RH** refers to the *passenger side* of the vehicle.
- **LH** refers to the *driver side* of the vehicle.
- Always use the proper torque specifications.
- If applicable to this installation, torque specifications will be listed throughout the document and at the end as well.
- Please read all of these instructions and familiarize yourself with the complete process **BEFORE** you begin.

## GENERAL PREPARATION AND SAFETY INFORMATION

ECS Tuning cares about your health and safety, please read the following safety information. This information pertains to automotive service in general, and while it may not pertain to every job you do, please remember and share these important safety tips.

- Park your car in a safe, well lit, level area.
- Shut the engine off and remove the key from the ignition switch.
- Make sure any remote start devices are properly disabled.
- **ALWAYS** wear safety glasses.
- Make sure the parking brake is applied until the vehicle is safely lifted and supported.
- Whether lifting a vehicle using an automotive lift or a hydraulic jack, be sure and utilize the factory specified lift points.
- Lifting a vehicle in an incorrect location can cause damage to the suspension/running gear.
- **ALWAYS** support the vehicle with jack stands.
- **ALWAYS** read and follow all safety information and warnings for the equipment you are using.



**NEVER** get underneath a vehicle that is supported only by a jack, and **ALWAYS** make sure that the vehicle is securely supported on jack stands.

## REMOVING THE STOCK REAR VALANCE

### Step 1: T25 Torx

Disconnect the PDC sensor connectors (arrows), remove the two screws which secure the rear valance to the spare tire well, then remove the valance.



Removing the stock rear valance will take a good bit of force. Place one hand on the rear bumper to brace it, then grip the valance at the first clip and firmly pull back until the clip pops free from the bumper. A non-marring pry tool can be used to help free the clips from the inside of the bumper as well. Repeat this process with each clip until the valance comes free.



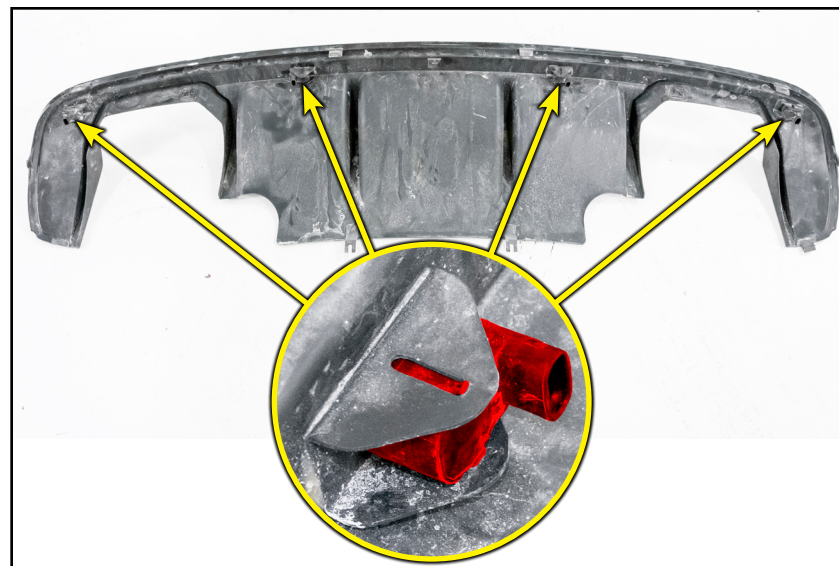
### Step 2:

Carefully remove each PDC sensor (highlighted in **RED** in inset photo) from the rear valance.



**For vehicles with a tow hitch:** Proceed to the next page for information on using the cut template.


**For vehicles without a tow hitch:** Skip ahead to [page 5](#) to continue installation.



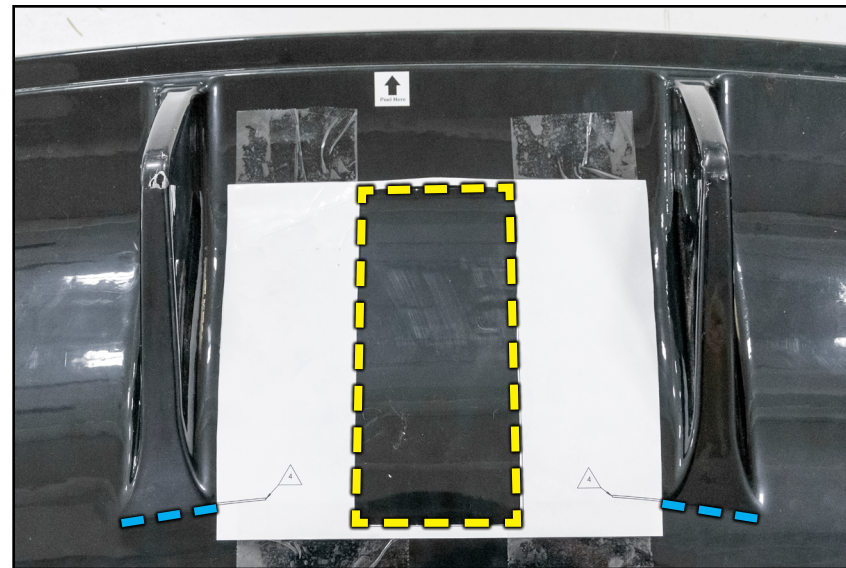


## USING THE TOW HITCH CUT TEMPLATE

### Step 1: Tape, Marker

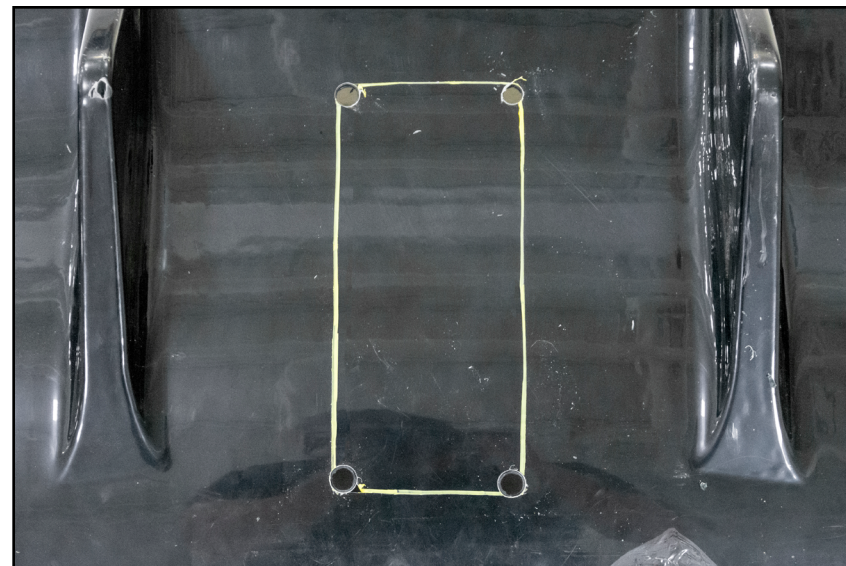
Download and print the hitch cut template located [HERE](#), cut along the dotted line, then tape the template to the diffuser as shown. The template should be aligned so that the lines on the template (indicated by ) align with the ends of the center diffuser fins (BLUE dotted lines).

Mark the diffuser around the perimeter of the template (YELLOW dotted lines), this mark will serve as the line to guide your cut.



### Step 2: Drill, Die Grinder -OR- Dremel

Remove the template and drill a hole at the four corners of the cut line as shown. Then, using a die grinder or dremel, cut along the lines until the four corners are connected. Clean up any remaining material or rough edges.





## INSTALLING THE REAR DIFFUSER

### Step 1:

Remove the backing and apply the four provided wiring harness mounts (arrows) to the back of the diffuser as shown.

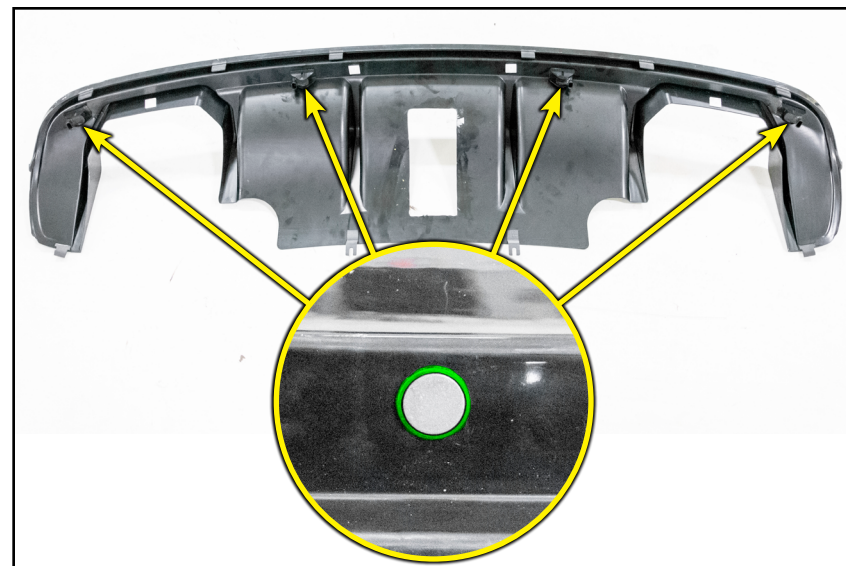


### Step 2:

Reinstall the four PDC sensors, ensuring they snap into place and the rubber gasket (highlighted in **GREEN** in inset photo) does not get pinched.



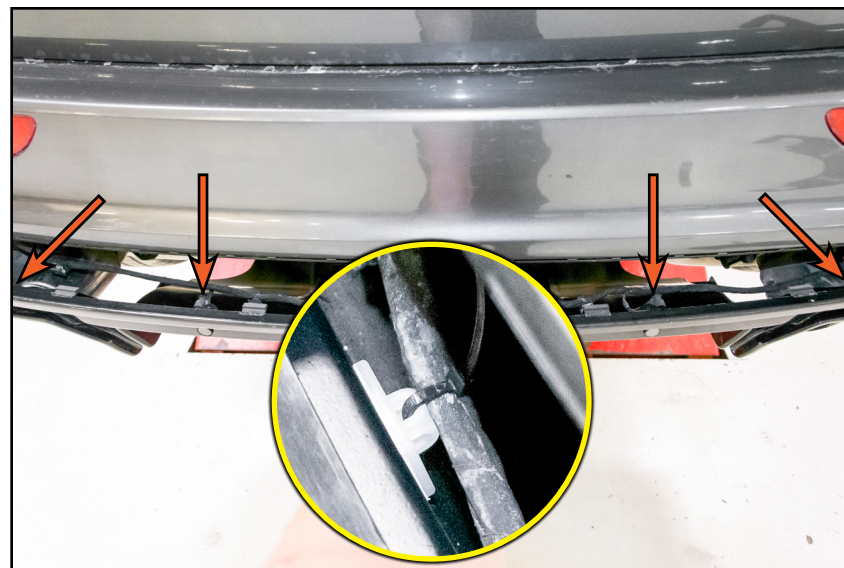
Spray the rubber gaskets with a small amount of silicone spray to help them seat properly.



## INSTALLING THE REAR DIFFUSER

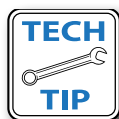
### Step 3:

Lift the diffuser up into place, reconnect the PDC sensor connectors (arrows), then attach the wiring harness to the mounts using the provided cable ties (as shown in inset photo).



### Step 4: T25 Torx

Gently push the diffuser inward to pop the mounting clips into the bumper, then replace the two torx screws (arrows). Peel off the protective plastic film.



It can be a little tricky to get the center clips on the diffuser to fully engage the bumper, we found that if you slide your hand *inside* the bumper and support it while your push the diffuser into place, it helps those clips pop into place a LOT easier.



***Congratulations, your installation is complete!***



## Your Rear Diffuser Kit installation is complete!



### These instructions are provided as a courtesy by ECS Tuning

Proper service and repair procedures are vital to the safe, reliable operation of all motor vehicles as well as the personal safety of those performing the repairs. Standard safety procedures and precautions (including use of safety goggles and proper tools and equipment) should be followed at all times to eliminate the possibility of personal injury or improper service which could damage the vehicle or compromise its safety.

Although this material has been prepared with the intent to provide reliable information, no warranty (express or implied) is made as to its accuracy or completeness. Neither is any liability assumed for loss or damage resulting from reliance on this material. SPECIFICALLY, NO WARRANTY OF MERCHANTABILITY, FITNESS FOR A PARTICULAR PURPOSE OR ANY OTHER WARRANTY IS MADE OR TO BE IMPLIED WITH RESPECT TO THIS MATERIAL. In no event will ECS Tuning, Incorporated or its affiliates be liable for any damages, direct or indirect, consequential or compensatory, arising out of the use of this material.