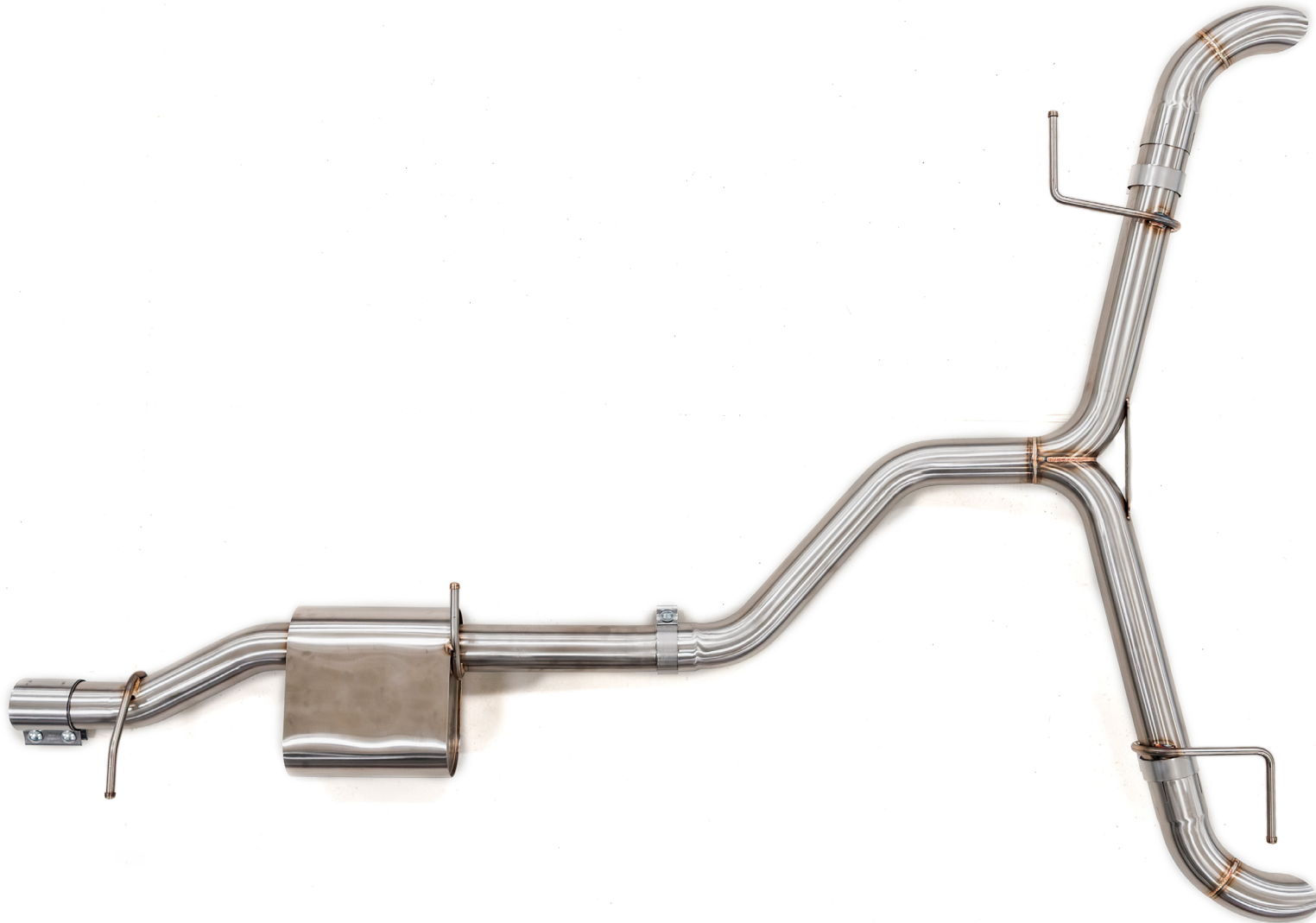




Skill Level
1 - Easy
Basic Skills
Required

VW Atlas Cat-Back Exhaust System
Installation Instructions - [Click HERE to Shop](#)

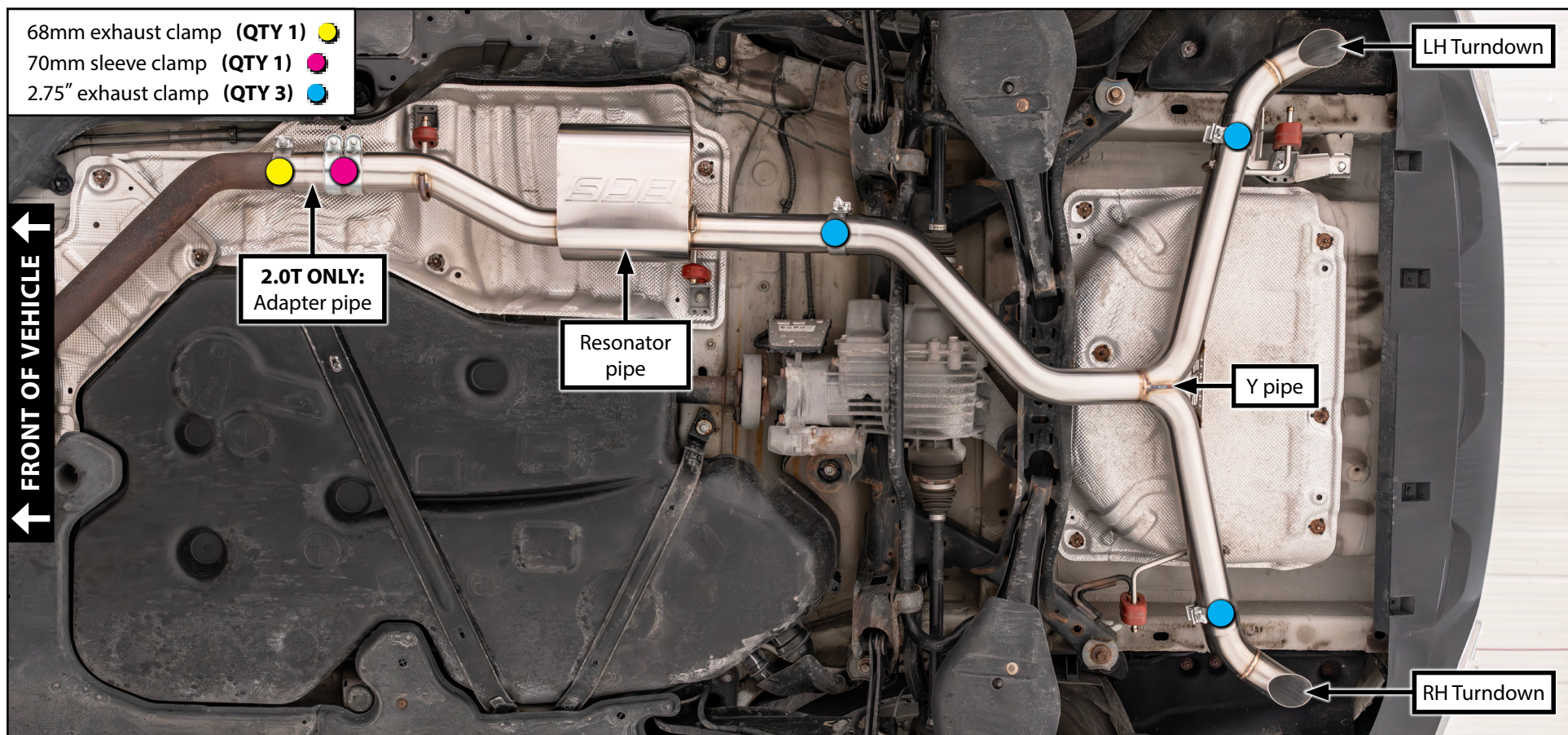


Proper service and repair procedures are vital to the safe, reliable operation of all motor vehicles as well as the personal safety of those performing the repairs. Standard safety procedures and precautions (including use of safety goggles and proper tools and equipment) should be followed at all times to eliminate the possibility of personal injury or improper service which could damage the vehicle or compromise its safety.

TABLE OF CONTENTS

Required Tools and Equipment.....[pg.3](#)
Installation and Safety Information.....[pg.4](#)
Removing the Stock Exhaust System.....[pg.5](#)
Installing the New Exhaust System.....[pg.6](#)

KIT CONTENTS



REQUIRED TOOLS

Note: The tools required for each step will be listed by the step number throughout these instructions.

Standard Automotive Tools

- Protecta-Sockets (for lug nuts) [ES#2221243](#)
- **3/8" Drive Ratchet** [ES#2765902](#)
- 3/8" Drive Torque Wrench [ES#2221245](#)
- **3/8" Drive Deep and Shallow Sockets** [ES#2763772](#)
- **3/8" Drive Extensions** [ES#2804822](#)
- **Hydraulic Floor Jack** [ES#2834951](#)
- Torx Drivers and Sockets [ES#11417/8](#)
- **1/2" Drive Deep and Shallow Sockets** [ES#2839106](#)
- **1/2" Drive Ratchet**
- **1/2" Drive Extensions**
- 1/2" Drive Torque Wrench [ES#2221244](#)
- 1/2" Drive Breaker Bar [ES#2776653](#)
- Bench Mounted Vise
- Crows Foot Wrenches
- Hook and Pick Tool Set [ES#2778980](#)

Required For This Install

- 1/4" Drive Ratchet [ES#2823235](#)
- 1/4" Drive Deep and Shallow Sockets [ES#2823235](#)
- 1/4" Drive Extensions [ES#2823235](#)
- Plier and Cutter Set [ES#2804496](#)
- Flat and Phillips Screwdrivers [ES#2225921](#)
- **Jack Stands** [ES#2763355](#)
- **Ball Pein Hammers**
- Pry Bar Set [ES#1899378](#)
- Electric/Cordless Drill
- Wire Strippers/Crimpers
- Drill Bits
- Triple Square Drivers [ES#9013](#)
- Hex Bit (Allen) Wrenches and Sockets [ES#11420](#)
- Thread Repair Tools [ES#1306824](#)
- **Open/Boxed End Wrench Set** [ES#2765907](#)

Available On Our Website

Specialty Tools

- **Exhaust Hanger Removal Pliers** [ES#2784927](#)
- **Riv-nut Installation Tool** [ES#4487724](#)

INSTALLATION NOTES

- **RH** refers to the *passenger side* of the vehicle.
- **LH** refers to the *driver side* of the vehicle.
- Always use the proper torque specifications.
- If applicable to this installation, torque specifications will be listed throughout the document and at the end as well.
- Please read all of these instructions and familiarize yourself with the complete process **BEFORE** you begin.

GENERAL PREPARATION AND SAFETY INFORMATION

ECS Tuning cares about your health and safety, please read the following safety information. This information pertains to automotive service in general, and while it may not pertain to every job you do, please remember and share these important safety tips.

- Park your car in a safe, well lit, level area.
- Shut the engine off and remove the key from the ignition switch.
- Make sure any remote start devices are properly disabled.
- **ALWAYS** wear safety glasses.
- Make sure the parking brake is applied until the vehicle is safely lifted and supported.
- Whether lifting a vehicle using an automotive lift or a hydraulic jack, be sure and utilize the factory specified lift points.
- Lifting a vehicle in an incorrect location can cause damage to the suspension/running gear.
- **ALWAYS** support the vehicle with jack stands.
- **ALWAYS** read and follow all safety information and warnings for the equipment you are using.

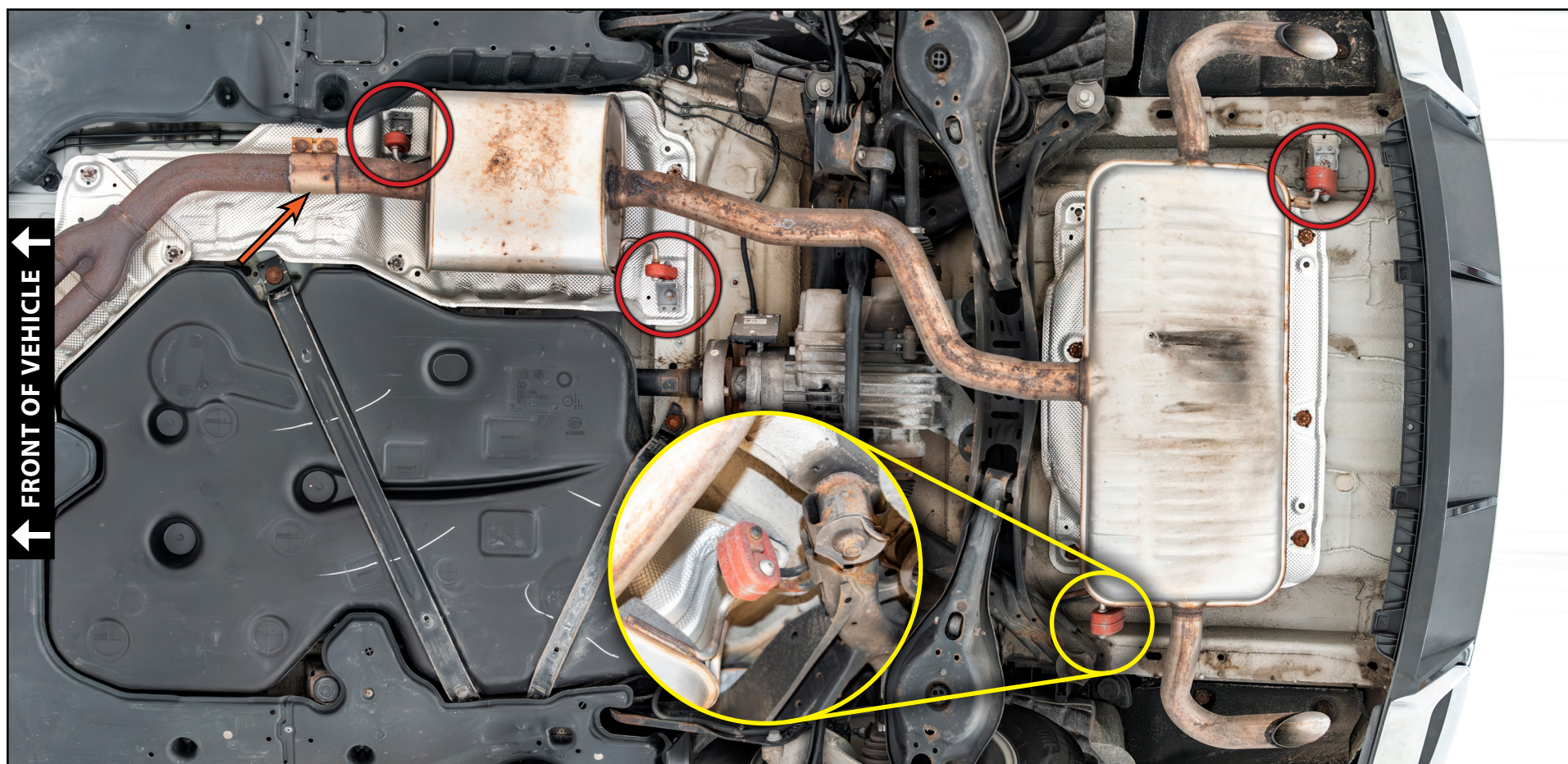


NEVER get underneath a vehicle that is supported only by a jack, and **ALWAYS** make sure that the vehicle is securely supported on jack stands.

REMOVING THE STOCK EXHAUST SYSTEM

Step 1: 13mm Socket & Ratchet, Exhaust Hanger Removal Pliers

Safely lift and support the vehicle then support the exhaust system from below and loosen the sleeve clamp (arrow) that secures the exhaust system to the downpipe. Release the RH hanger (circled in **YELLOW**) from the muffler. Unbolt the exhaust hangers (circled in **RED**) from the vehicle and carefully lower the entire exhaust system to the ground.

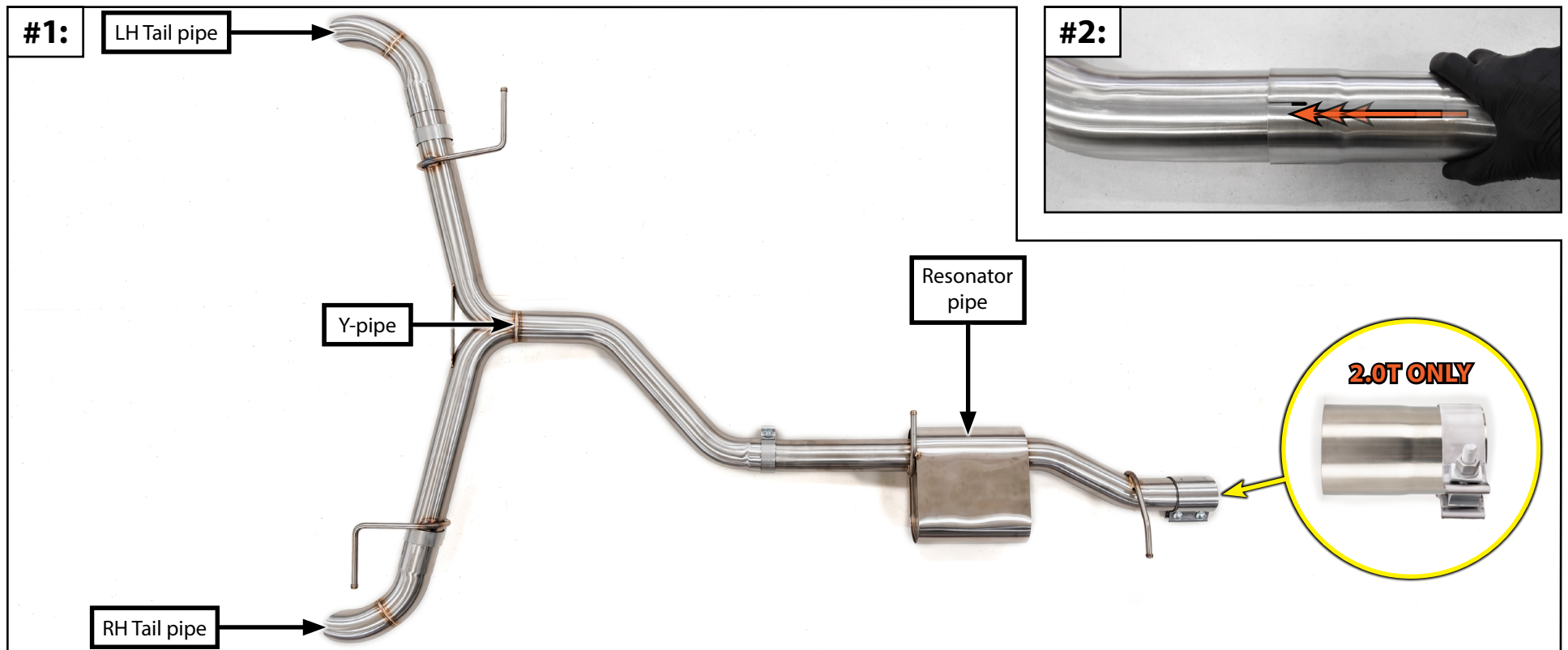


INSTALLING THE NEW EXHAUST SYSTEM

Step 1: Exhaust Pipe Expander -OR- Ball Pein Hammer

Before we begin, unpack your new exhaust system and carefully lay it out on the floor (**Photo #1**). Inspect all of the slip joints for any signs of damage during shipping. Test fit the pipes together at every slip joint to make sure they slide together easily (**Photo #2**). If they do not slide together easily, use a exhaust pipe expander or gently tap on the ends of the pipes with a ball pein hammer to straighten them, then recheck fitment.

Please note that during this installation, you will be installing the exhaust from front-to-back **WITHOUT** tightening any of the clamps. Once the system is installed, we will then show you how to adjust the system properly and you will tighten the clamps **AFTER** that is complete. Proceed to the next page once all of the slip joints slide together easily.



INSTALLING THE NEW EXHAUST SYSTEM

Step 2: Exhaust Hanger Removal Pliers

Transfer the exhaust hangers from the stock resonator to the new resonator pipe. Be sure to orient them exactly as they were before (**Photo #1 & Photo #2**).

#1:



#2:



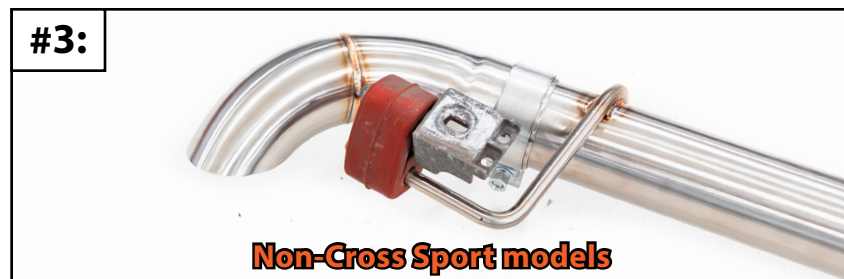
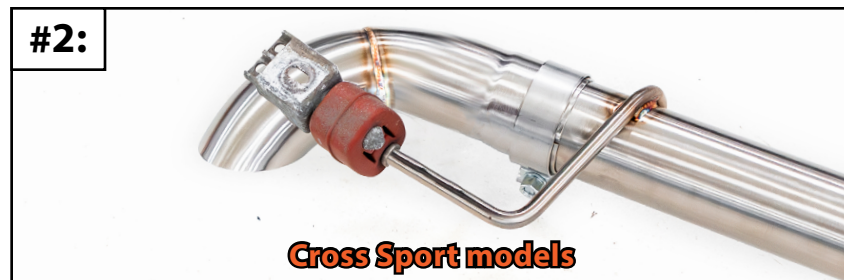
INSTALLING THE NEW EXHAUST SYSTEM

Step 3: Exhaust Hanger Removal Pliers

Transfer the LH muffler hanger from the stock muffler to the Y-pipe as shown.

Cross Sport models: Orient the muffler hanger exactly as it was before (**Photo #1 & Photo #2**).

Non-Cross Sport models: The LH muffler hanger should be installed in the **opposite** direction as before (**Photo #1 & Photo #3**).



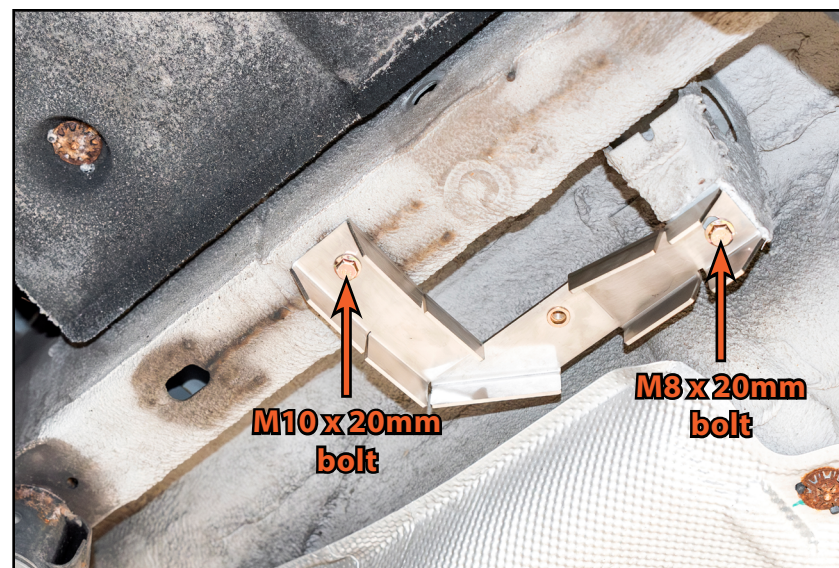
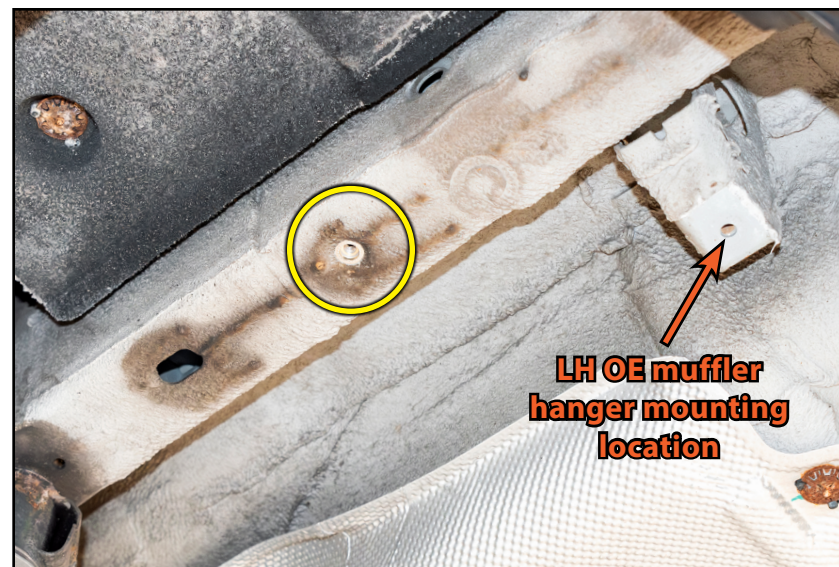
INSTALLING THE NEW EXHAUST SYSTEM

Step 4: 13.5mm Drill Bit, Drill, Riv-Nut Installation Tool

Non-Cross Sport models ONLY: Locate the hole (circled in **YELLOW**) just forward of the LH OE muffler hanger mounting location, drill it out with a 13.5mm drill bit, then crimp the provided riv-nut into the hole as shown.

Step 5: 12mm Socket & Ratchet

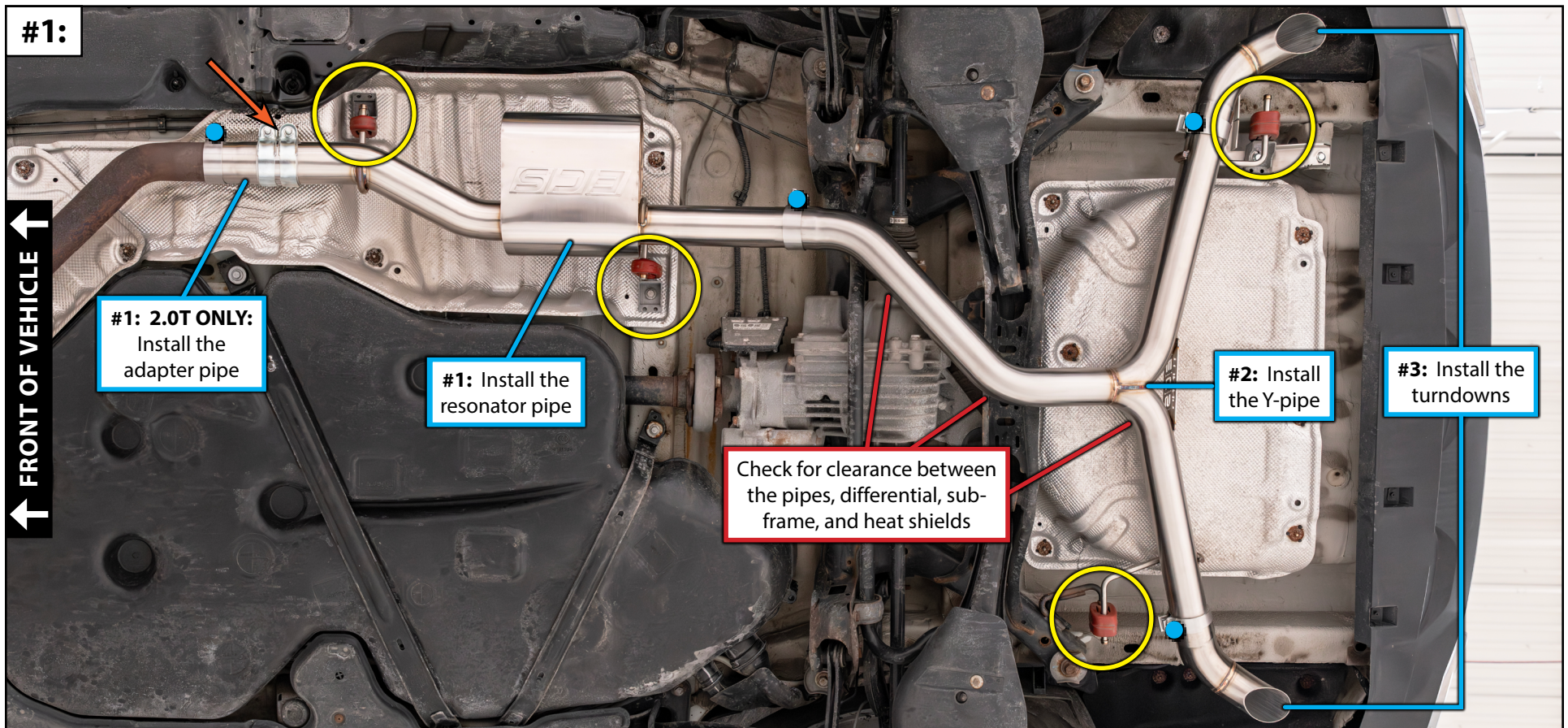
Non-Cross Sport models ONLY: Install the provided hanger relocation bracket between the LH OE muffler hanger mounting location and the new riv-nut and secure it in place with the provided M10 and M8 bolts (arrows).



INSTALLING THE NEW EXHAUST SYSTEM

Step 6: 13mm, 15mm Sockets & Ratchet

Install the exhaust system in the order shown in **Photo #1** below using the provided sleeve clamp (arrow). Reinstall/reconnect the exhaust hangers (circled in **YELLOW**), then it's time to adjust the exhaust system for proper fitment. The key to proper adjustment is patience, take your time and snug the clamps (**BLUE** circles) but **DO NOT** fully tighten any of the clamps until **AFTER** you've performed all of the steps up through page 12. Closely inspect the exhaust system from front to back, checking for clearance between the pipes and nearby chassis components, paying particular attention to the area around the differential, subframe, and heat shields.



INSTALLING THE NEW EXHAUST SYSTEM

Step 7: 15mm Socket & Ratchet

Check the hangers on the resonator pipe and the Y-pipe to ensure that they are sitting level side-to-side (**Photos #1 & #2 below**).

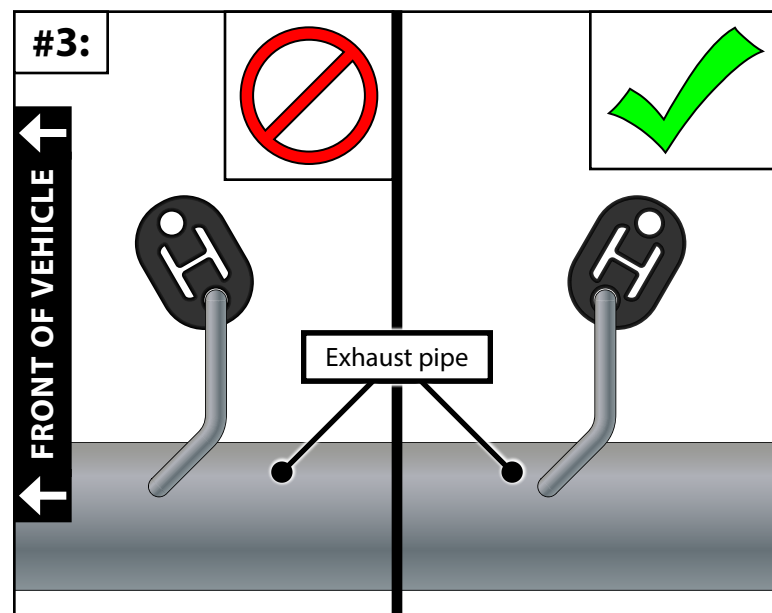
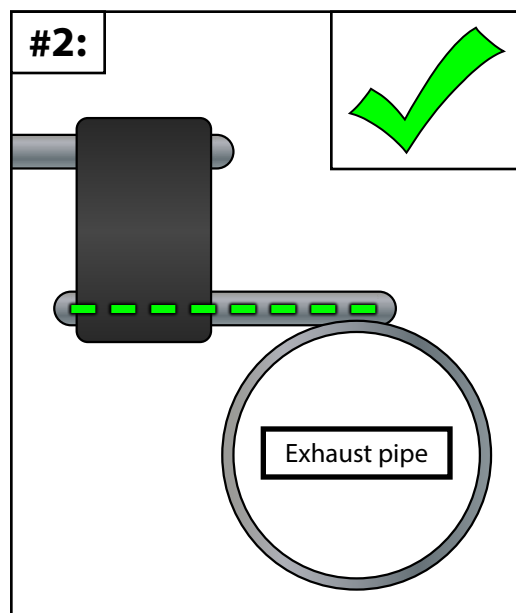
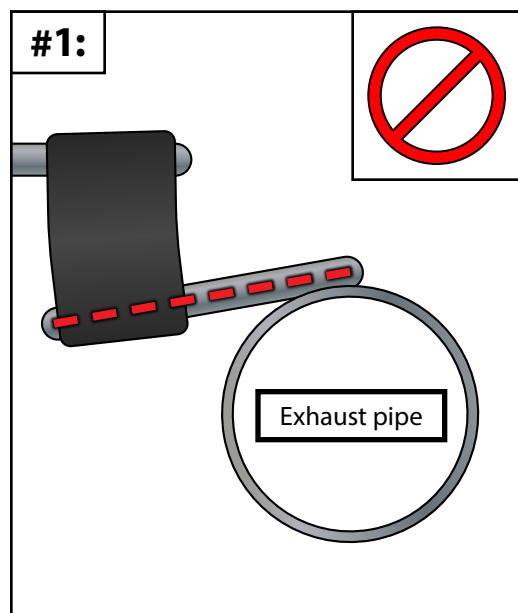
Finally, we want to ensure that the exhaust hangers are rotated at least slightly toward the front of the vehicle (**Photo #3 below**). The exhaust hangers should be inclined toward the front of the vehicle so that lower hole is approximately 10-15mm forward of the upper hole, this will allow the hangers to pivot backwards as the system heats up and expands.



Due to differences in manufacturing, as well as variations from one car to another, you might not be able to get all of your hangers to pitch forward. This is acceptable as long as they are at least close to vertical.



CAUTION: You can tighten the exhaust clamps until they are “snug”, but **DO NOT USE AN IMPACT WRENCH** and do not fully tighten them yet!

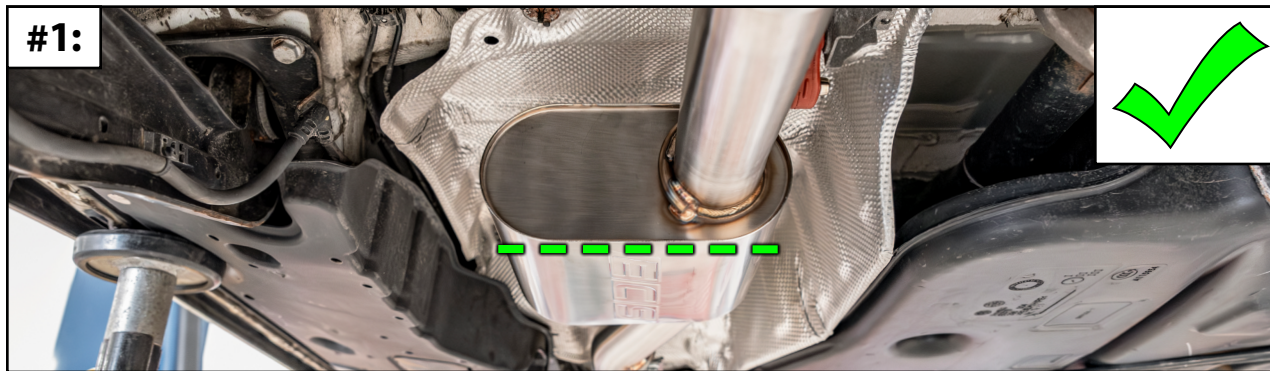


INSTALLING THE NEW EXHAUST SYSTEM

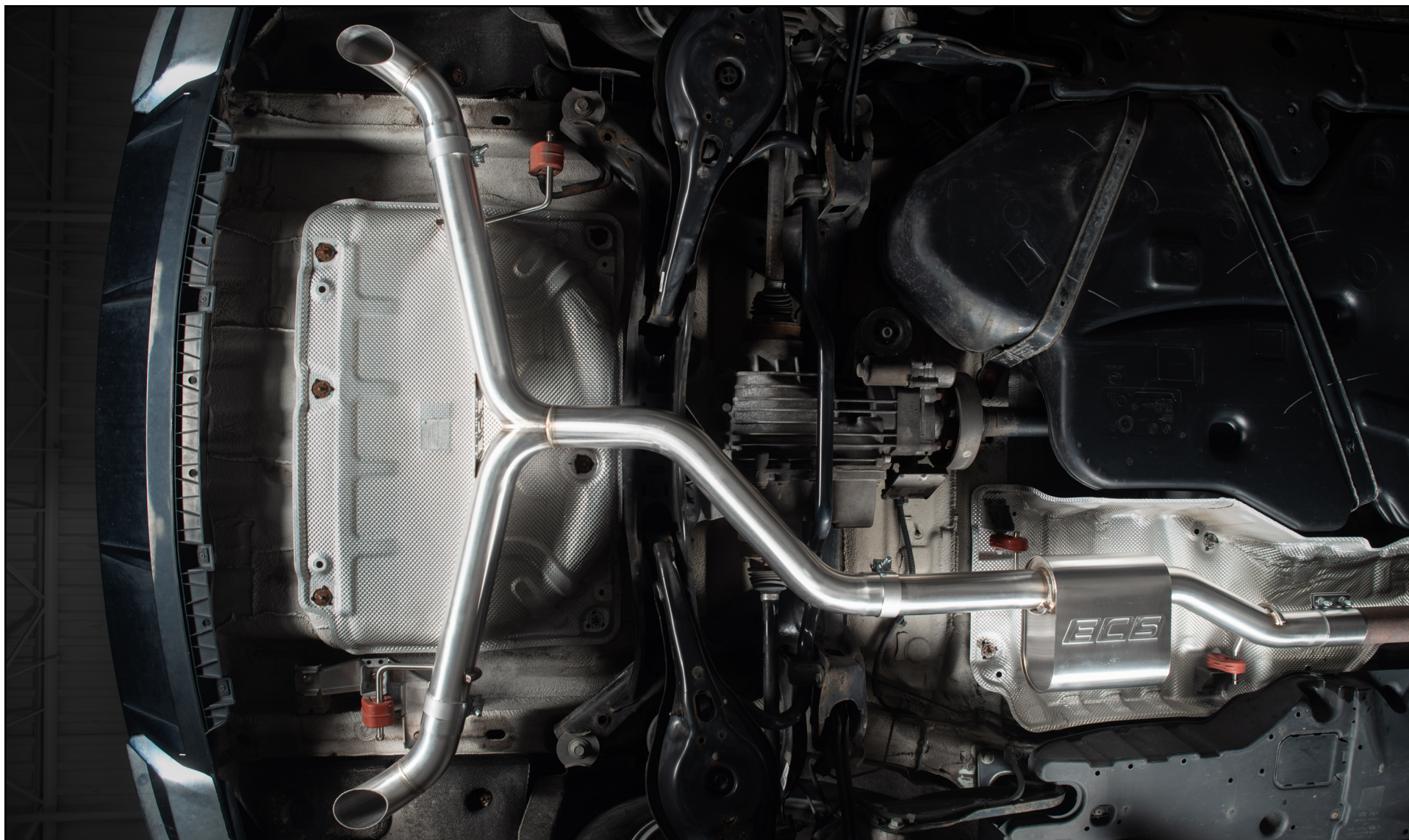
Step 8: 15mm Socket & Ratchet

Inspect the resonator and ensure that it is sitting level side-to-side as much as possible (**Photo #1 below**). Inspect the Y-pipe and ensure that it is sitting level side-to-side as much as possible (**Photo #2 below**). Rotate each turndown so that it faces directly towards the ground (**Photo #3 below**). Once the system is properly adjusted, fully tighten all of the clamps. Starting at the front and moving rearward, push upward on the exhaust system as you fully tighten each clamp, then let go and allow the exhaust to settle, then check again for clearance around all pipes.

Congratulations, your installation is complete!



Your Cat-Back Exhaust System installation is complete!



These instructions are provided as a courtesy by ECS Tuning

Proper service and repair procedures are vital to the safe, reliable operation of all motor vehicles as well as the personal safety of those performing the repairs. Standard safety procedures and precautions (including use of safety goggles and proper tools and equipment) should be followed at all times to eliminate the possibility of personal injury or improper service which could damage the vehicle or compromise its safety.

Although this material has been prepared with the intent to provide reliable information, no warranty (express or implied) is made as to its accuracy or completeness. Neither is any liability assumed for loss or damage resulting from reliance on this material. SPECIFICALLY, NO WARRANTY OF MERCHANTABILITY, FITNESS FOR A PARTICULAR PURPOSE OR ANY OTHER WARRANTY IS MADE OR TO BE IMPLIED WITH RESPECT TO THIS MATERIAL. In no event will ECS Tuning, Incorporated or its affiliates be liable for any damages, direct or indirect, consequential or compensatory, arising out of the use of this material.