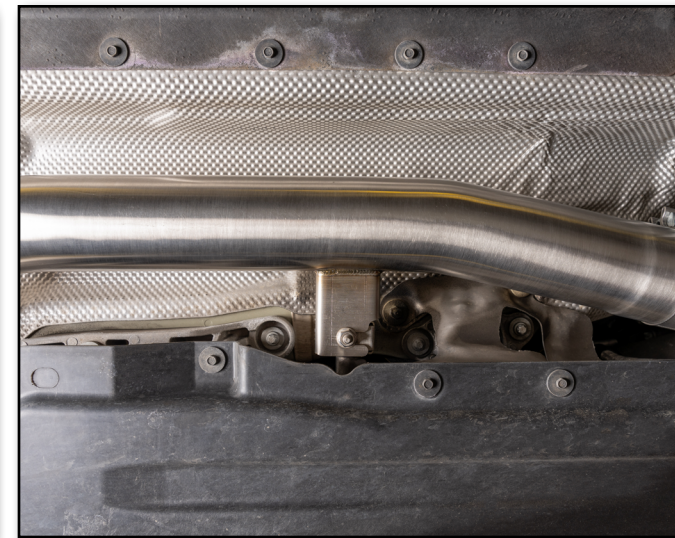




**BMW G05 X5 40i Resonator Delete Kit**  
**Installation Instructions - [Click HERE to Shop](#)**



**Skill Level**  
**1 - Easy**  
**Basic Skills**  
**Required**



Proper service and repair procedures are vital to the safe, reliable operation of all motor vehicles as well as the personal safety of those performing the repairs. Standard safety procedures and precautions (including use of safety goggles and proper tools and equipment) should be followed at all times to eliminate the possibility of personal injury or improper service which could damage the vehicle or compromise its safety.

## INSTALLATION NOTES

- **RH** refers to the *passenger side* of the vehicle.
- **LH** refers to the *driver side* of the vehicle.
- Always use the proper torque specifications.
- If applicable to this installation, torque specifications will be listed throughout the document and at the end as well.
- Please read all of these instructions and familiarize yourself with the complete process **BEFORE** you begin.

## GENERAL PREPARATION AND SAFETY INFORMATION

ECS Tuning cares about your health and safety, please read the following safety information. This information pertains to automotive service in general, and while it may not pertain to every job you do, please remember and share these important safety tips.

- Park your car in a safe, well lit, level area.
- Shut the engine off and remove the key from the ignition switch.
- Make sure any remote start devices are properly disabled.
- **ALWAYS** wear safety glasses.
- Make sure the parking brake is applied until the vehicle is safely lifted and supported.
- Whether lifting a vehicle using an automotive lift or a hydraulic jack, be sure and utilize the factory specified lift points.
- Lifting a vehicle in an incorrect location can cause damage to the suspension/running gear.
- **ALWAYS** support the vehicle with jack stands.
- **ALWAYS** read and follow all safety information and warnings for the equipment you are using.

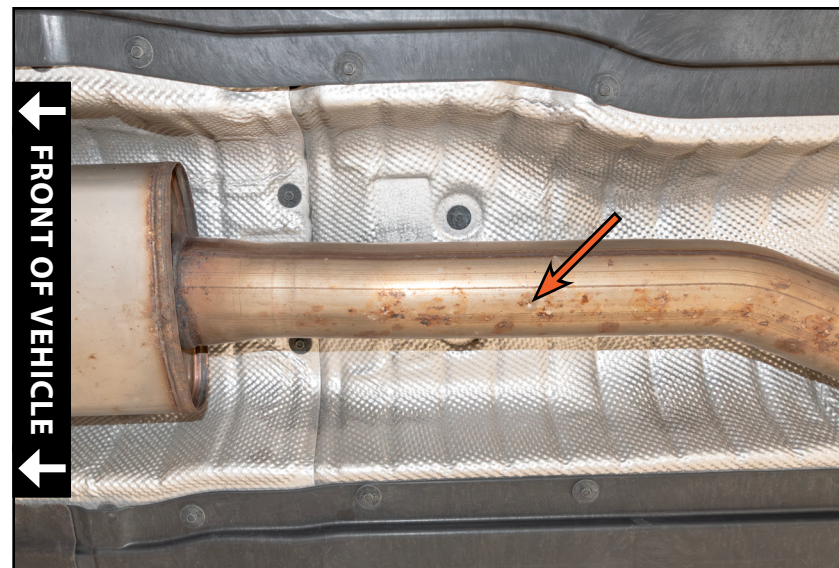


**NEVER** get underneath a vehicle that is supported only by a jack, and **ALWAYS** make sure that the vehicle is securely supported on jack stands.

## INSTALLING THE RESONATOR DELETE KIT

### Step 1: Marker -OR- Masking Tape

Locate the faint OE dimple (arrow) on the exhaust pipe, just downstream of the resonator and make a mark all the way around the pipe at this point.



### Step 2: Exhaust Pipe Cutter Tool, Metal File



It is **absolutely imperative** that you take your time here and double or triple check your marks before you cut anything. There is no turning back once the pipe has been cut, so measure twice, cut once!

Cut along the line we made in the previous step, being sure to cut as straight as possible until you cut all the way through the pipe, then remove any burrs from the exhaust pipe, this will ensure a proper fit and seal once the new pipe is installed.



## INSTALLING THE RESONATOR DELETE KIT

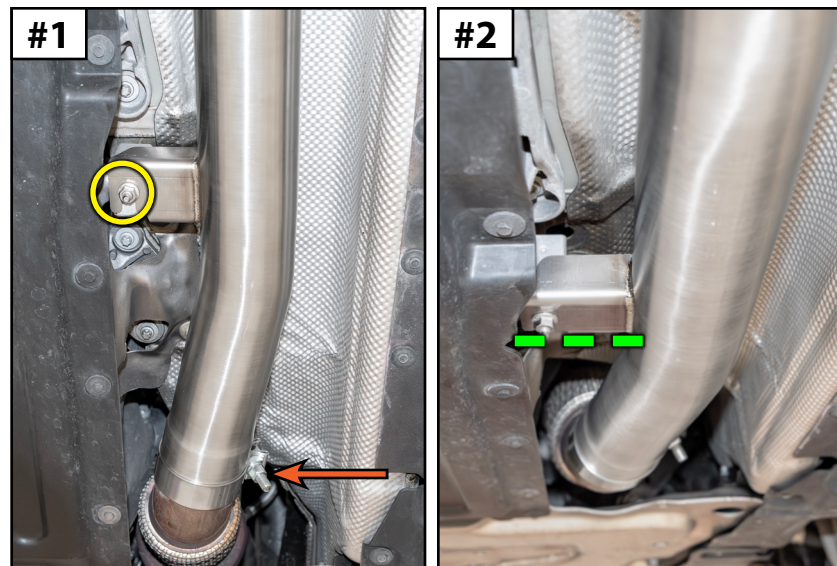
### Step 3: 13mm Socket & Ratchet

Loosen the clamp (arrow) that secures the resonator to the downpipe, then support the resonator from below, loosen the nut (circled in **RED**) and remove the resonator.



### Step 4: 13mm, 15mm Socket & Ratchet

Slide the new front pipe onto the downpipe, loosely install the nut (circled in **YELLOW** in **Photo #1**) and lightly snug the clamp (arrow). Rotate the pipe until the hanger bracket is level side to side (as shown in **Photo #2**), then fully tighten the nut and clamp.



## INSTALLING THE RESONATOR DELETE KIT

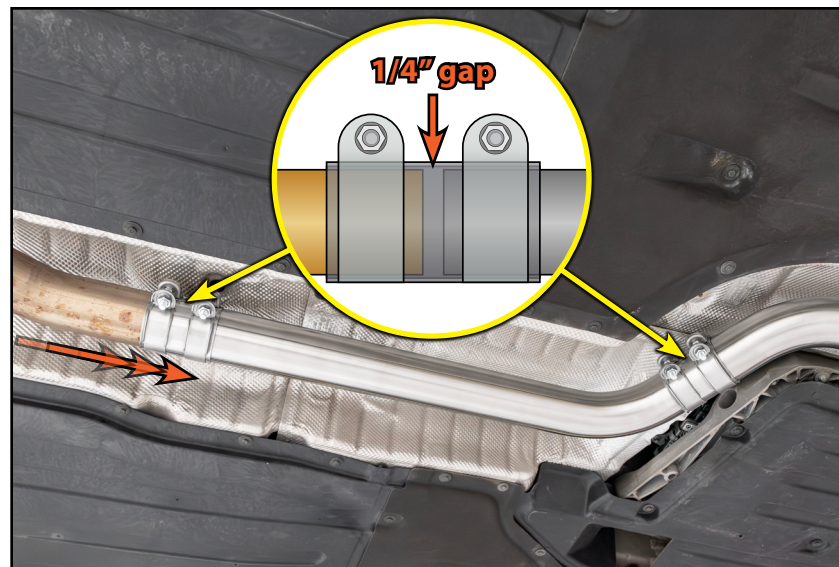
### Step 5:

Slide the provided sleeve clamps onto the resonator delete pipe as shown.



### Step 6: 17mm Socket & Ratchet

Lift the new resonator delete pipe into place and slide the sleeve clamps onto the stock exhaust pipe and new front pipe as shown. Center the front sleeve clamp between the front pipe and Y-pipe, then push the stock exhaust system forward, leaving a 1/4" gap (as shown in inset photo) before fully tightening the clamps.



***Congratulations, Your installation is complete!***

## Your Resonator Delete Kit installation is complete!



### **These instructions are provided as a courtesy by ECS Tuning**

Proper service and repair procedures are vital to the safe, reliable operation of all motor vehicles as well as the personal safety of those performing the repairs. Standard safety procedures and precautions (including use of safety goggles and proper tools and equipment) should be followed at all times to eliminate the possibility of personal injury or improper service which could damage the vehicle or compromise its safety.

Although this material has been prepared with the intent to provide reliable information, no warranty (express or implied) is made as to its accuracy or completeness. Neither is any liability assumed for loss or damage resulting from reliance on this material. SPECIFICALLY, NO WARRANTY OF MERCHANTABILITY, FITNESS FOR A PARTICULAR PURPOSE OR ANY OTHER WARRANTY IS MADE OR TO BE IMPLIED WITH RESPECT TO THIS MATERIAL. In no event will ECS Tuning, Incorporated or its affiliates be liable for any damages, direct or indirect, consequential or compensatory, arising out of the use of this material.