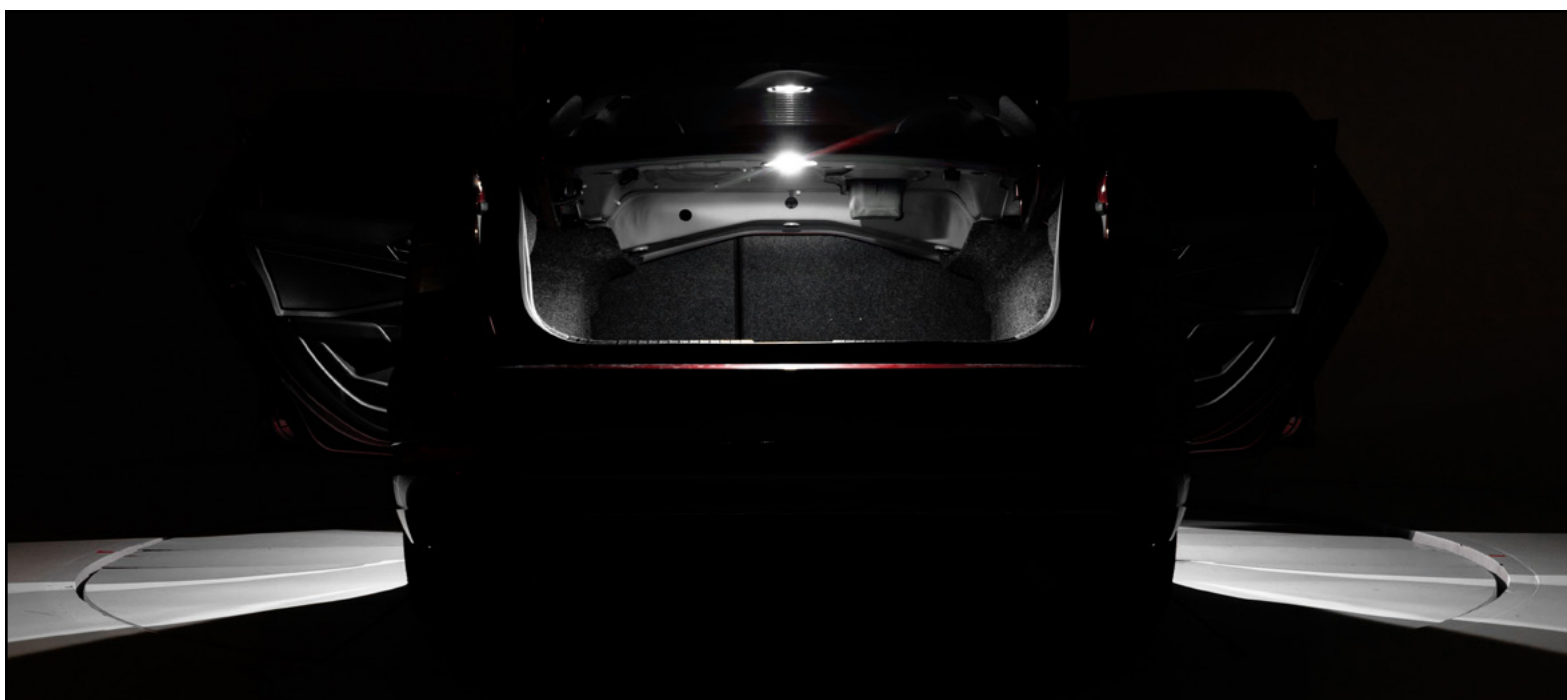
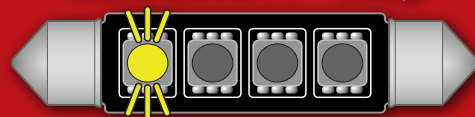


## Volkswagen MK7 Jetta w/Sunroof Ziza LED Interior Lighting Kit Installation Instructions - [ES4164783](#)

Skill Level 1 - Easy



### Kit Contents:

6-chip 36mm festoon bulb	(QTY 2)
8-chip 42mm festoon bulb	(QTY 1)
8-chip T10 wedge bulb	(QTY 4)

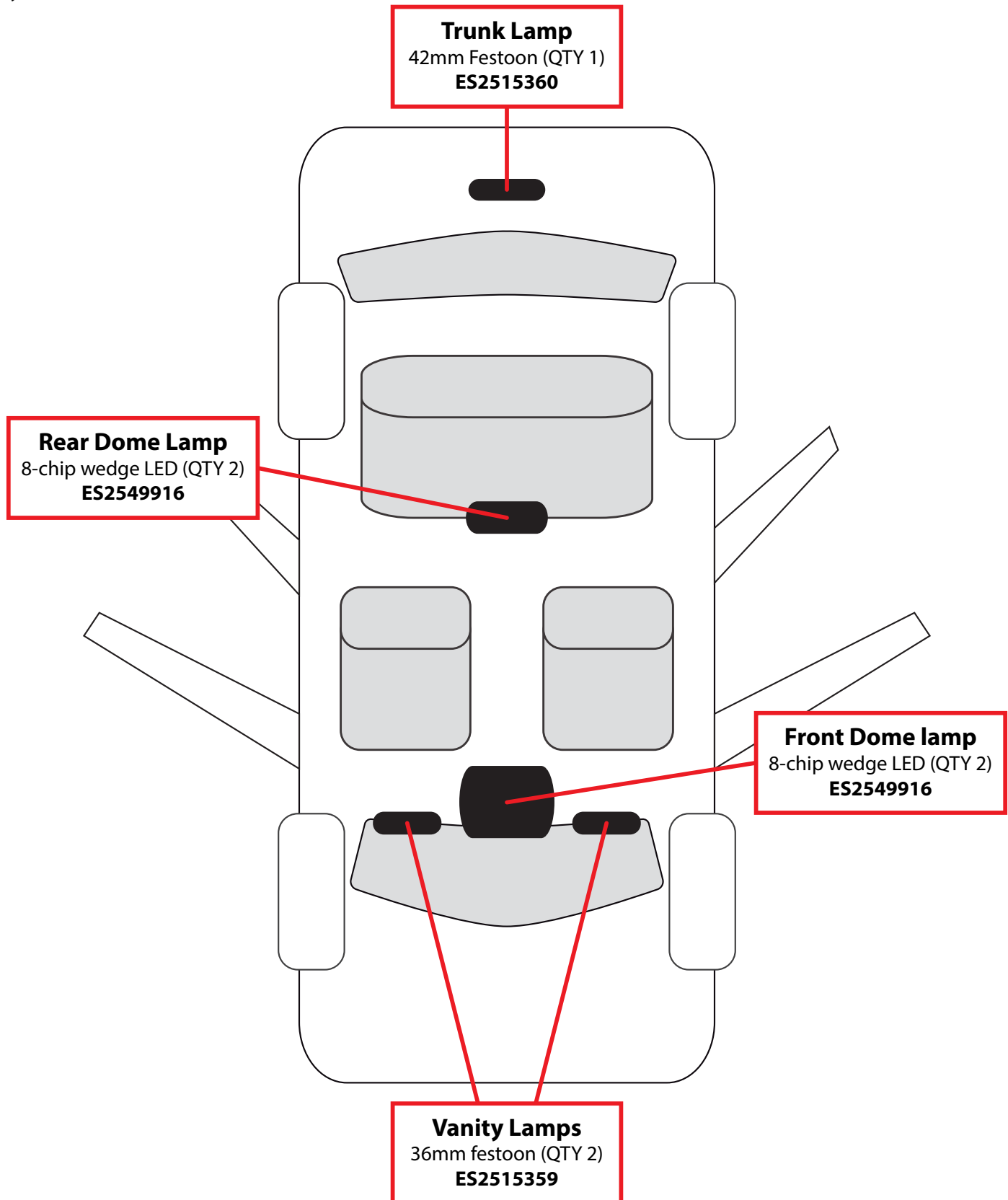
### Required Tools:

Trim Removal Tools	<a href="#">(ES#517779)</a>
Small Straight Pick	<a href="#">(ES#2778980)</a>

## Section 1: Introduction

### LED Locations

This kit is for MK7 Jettas **with** a sunroof (SE, R-Line, SEL & GLI trim levels). We've created the diagram below to help you determine where each of your new LEDs need to be installed. Please feel free to reference this page as needed while unboxing and installing your LED kit.



## Section 1: Introduction

### What are LEDs?

LEDs are Light Emitting Diodes, solid state devices which emit light when connected to electrical current. They have no moving parts or wire filaments to burn out. They emit a whiter light, run cooler, and last longer than the incandescent (filament style) bulbs we are replacing in this tutorial.

Unlike filament bulbs, LEDs are polarity sensitive. They have plus and minus (positive and negative) electrical terminals that must match the polarity of the applied voltage. Installing the bulbs "backwards" in the light bulb sockets (with reversed polarity) will not harm them, but they will not light. Flipping the bulb 180° in the electrical connector cures this problem.

### Bulb Types

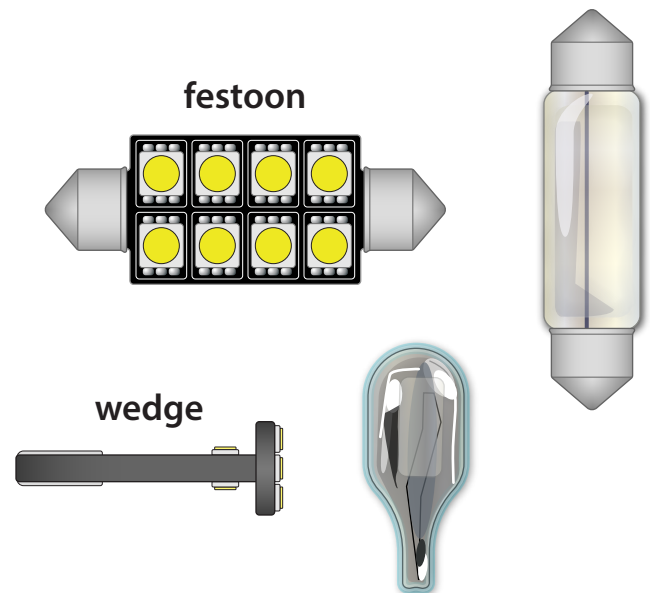
This kit includes two bulb types, classified by their general shape:

#### FESTOON

- Conventional incandescent festoon bulbs have a shape and general appearance that is similar to a glass fuse.
- Metal caps attached to both ends of a glass tube are sealed to the tube and attached to the bulb filament. End caps mount the bulb in its holder and also conduct electrical current.
- LED festoon lights have the same pointed end caps, but are attached to a bank of LEDs instead of a filament tube.

#### WEDGE

- Wedge style bulbs get their name from the shape of the bulb base.
- The tapered end of the bulb "wedges" into the bulb socket.
- LED wedge lights fit the bulb socket like a filament bulb, but are polarity sensitive.



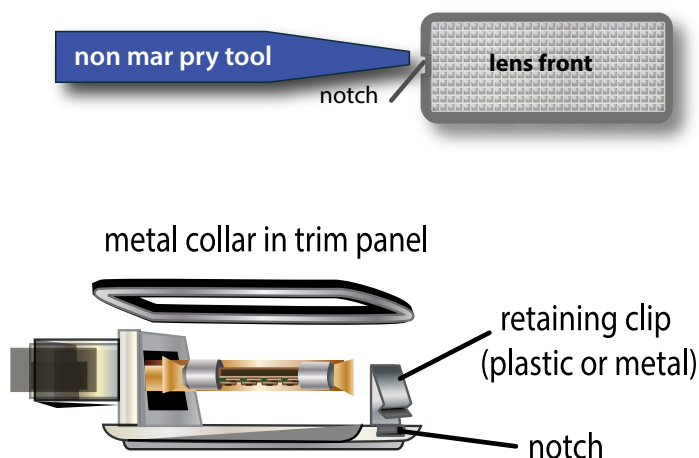
### General Tips

When prying down on the assemblies to remove them, pry on the notched end of the lens. Insert the narrow tool tip **between** the lens plastic and any metal collar used to reinforce the lens mounting hole. Push in on the retaining clip first to compress and release it, then pry down.

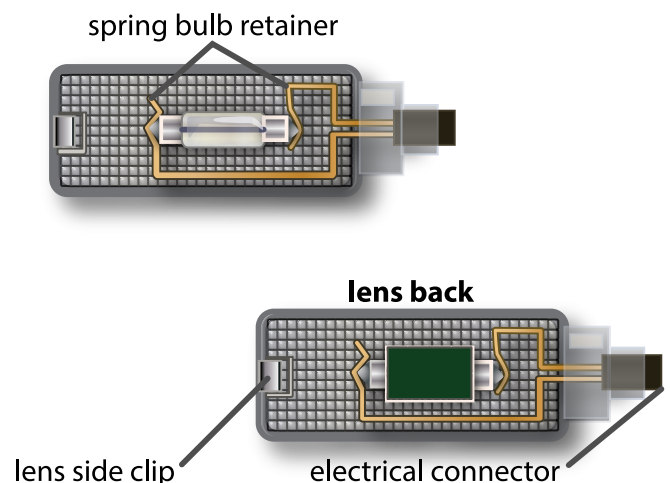
The spring bulb retainer is also the circuit conductor. If necessary, gently bend the metal retainer so it holds the bulb tight. This will help prevent intermittent or flickering LED operation caused by a loose connection.

Install the bulbs with the LEDs facing toward the lens.

#### Assembly removal



#### Bulb removal

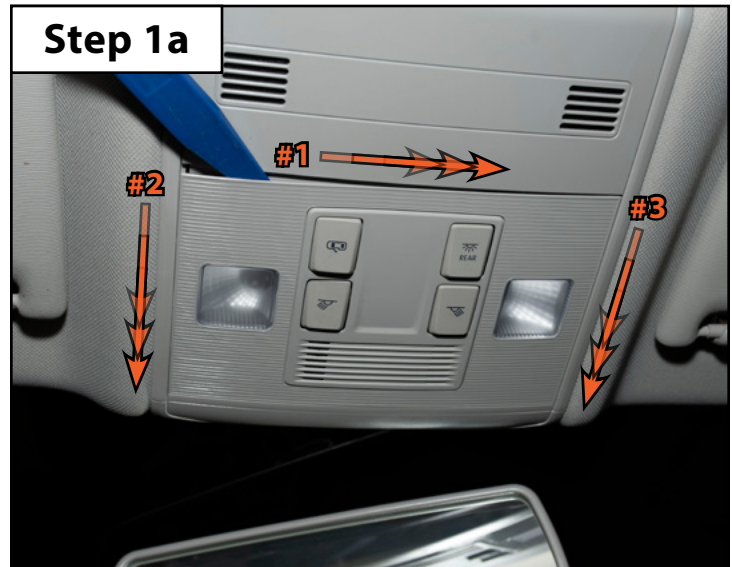


## Section 2: Front Dome Lamp Installation

### Step 1a

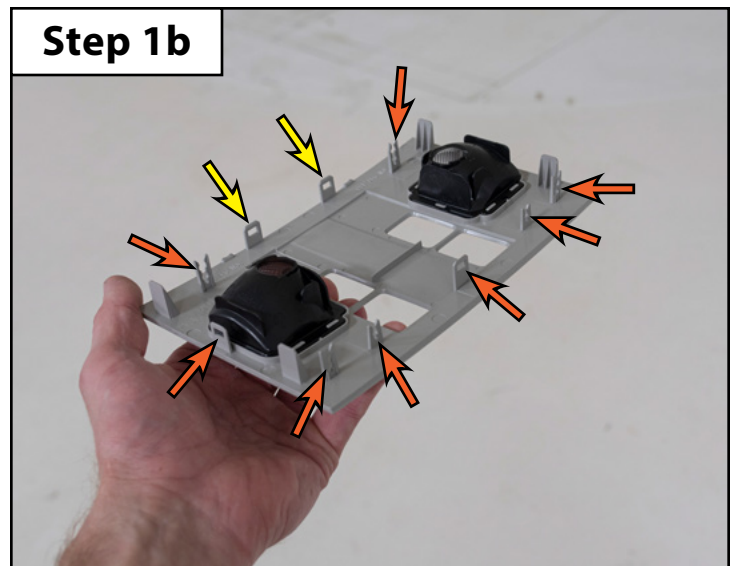
- The front dome light bulbs are accessed by opening up the front dome lamp housing.
- Using a non-marring trim tool, carefully pry the dome lamp cover downward to release the clips which secure it into place.
  - We guide the trim tool around the dome lamp cover in the order shown in the **Step 1a Photo** on the right, releasing clips as we go.
  - This won't release all of the clips, for this we need to continue to Step 1b below.

**NOTE:** The photos show a dome lamp housing from a MK7 Jetta S without a sunroof, but the process is the identical.



### Step 1b

- In this photo we see the back side of the front dome lamp cover. We've removed it from the vehicle for visibility because it's important to note where all of the clips are located so we don't break any of them off during removal.
- When you perform **Step 1a** above you should be able to release almost all of the clips (see **ORANGE** arrows in the **Step 1b Photo**). The two remaining clips (**YELLOW** arrows in the **Step 1b Photo**) can really be tough to release without breaking them off.



### Step 1c

- With the front dome lamp cover partially released and hanging down (we removed it entirely in this photo for maximum visibility), use your trim tool to release the two rearmost clips which secure the black upper panel into the headliner.
- Once these two clips have been released the entire housing will drop out, you can reach those tricky clips from the **Step 1b Photo**, remove the dome lamp cover and reinstall the black housing back into the headliner.

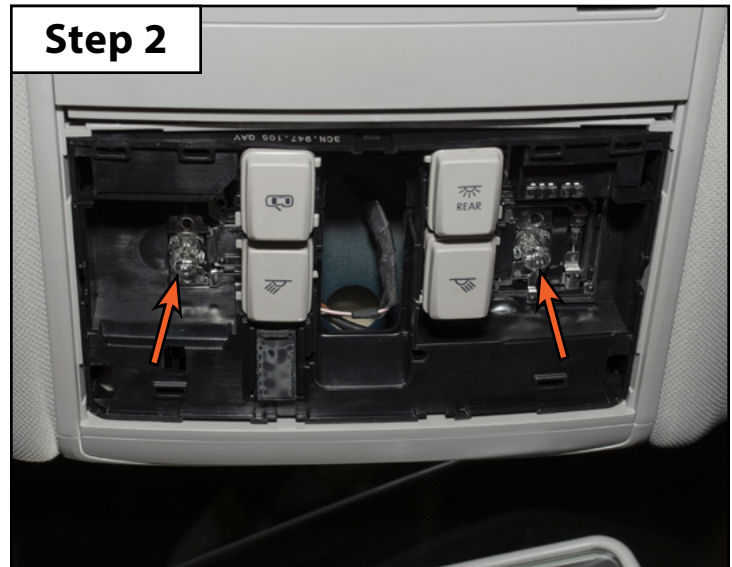




## Section 2: Front Dome Lamp Installation

### Step 2

- Be sure that the bulbs (arrows) have had time to cool down, then remove them from the housing.



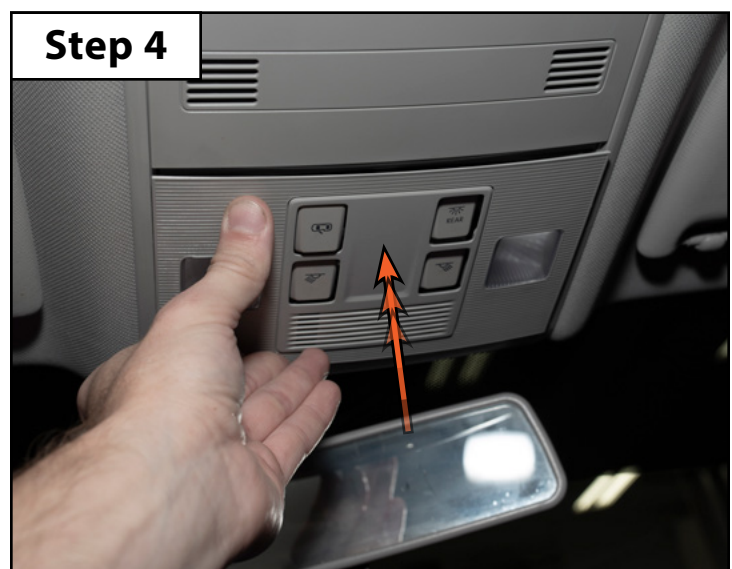
### Step 3

- Install the 8-chip T10 wedge bulbs.
- Check to see if the bulbs light up when you set the dome light switch to 'on'.
- If an LED doesn't turn on:
  - Remove the LED from the housing
  - Rotate it 180°
  - Reinstall the LED and retest
  - The LED should now illuminate



### Step 4

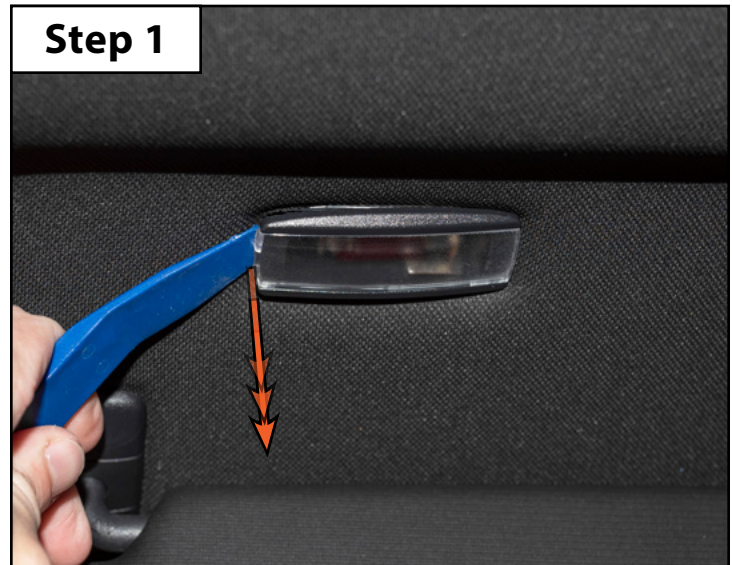
- Reinstall the front dome lamp cover.



## Section 3: Vanity Lamp Installation

### Step 1

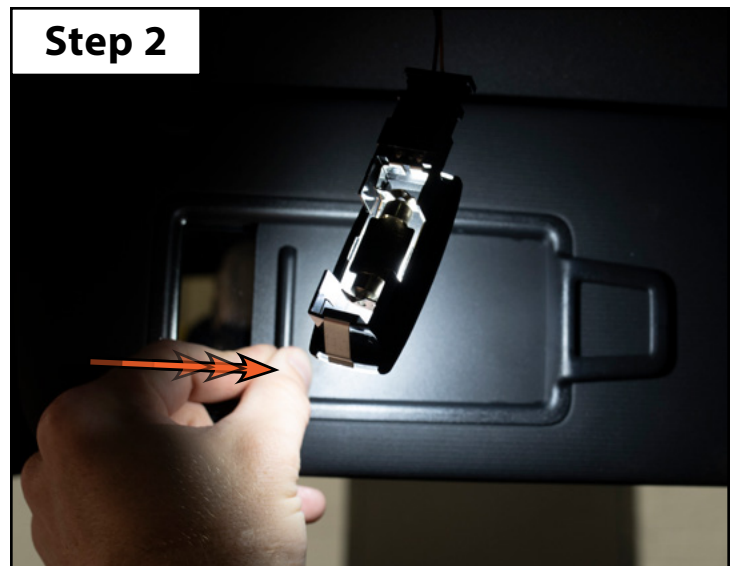
- The vanity light bulbs are located in the housings inside the headliner above the sun visors.
- Slide your non-marring trim tool into the notch in the side of the housing (see [Page 3](#)), release the spring clip and gently pry the housing out of the headliner.
- Be sure that the bulb has had time to cool down, then remove it from the housing (not shown).



### Step 2

- Install the 6-chip 36mm festoon bulb.
- Check to see if the bulb lights up when you slide the vanity mirror open.
- If the LED doesn't turn on:
  - Remove the LED from the housing
  - Rotate it 180°
  - Reinstall the LED and retest
  - The LED should now illuminate

**NOTE:** Due to differences in manufacturing, you may find that your LED fits loosely between the electrical contacts inside the lamp housing. If you run into this situation, you can easily bend the tabs inward by hand (1-2mm should be sufficient).



### Step 3

- Reinstall the vanity lamp housing.
- Repeat this procedure on the other vanity lamp.

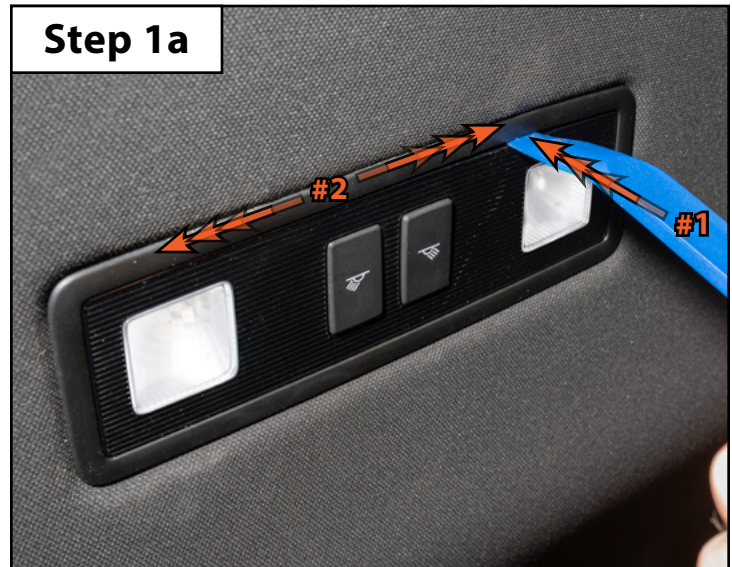




## Section 4: Rear Dome Lamp Installation

### Step 1a

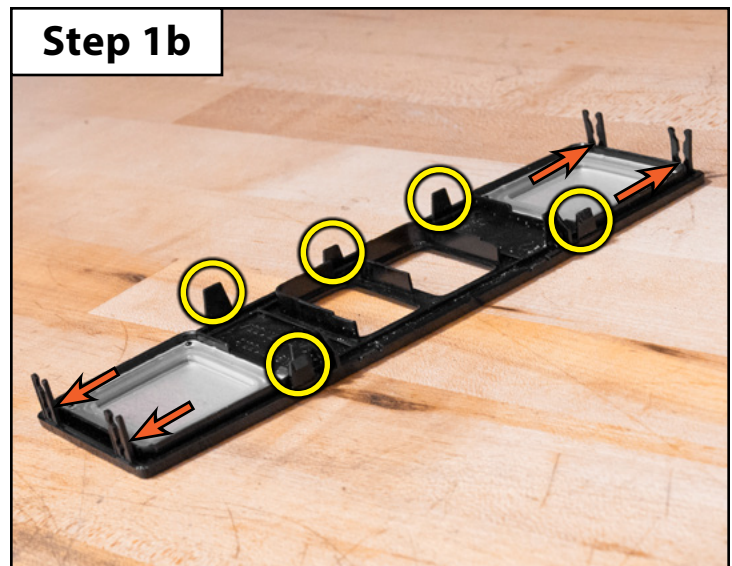
- The rear dome light bulbs are accessed by opening up the rear dome lamp housing.
- *Opening this housing is probably the most difficult part of this whole install, it's extremely important to work slowly and carefully in this step to prevent damage to your housing or headliner.*
- Using a non-marring trim tool, carefully pry between the rear dome lamp lens and the outer ring (**Step 1a Photo** on the right).
  - Once you get the tool underneath the lens you will need to work your way around the perimeter to release the clips which secure it into place.
  - *More details on this in Step 1b below.*



### Step 1b

- In this photo we see the back side of the rear dome lamp lens. We've removed it from the vehicle for visibility because it's important to note where all of the clips are located so we don't break any of them off during removal.
- The four corner clips are the easiest to accidentally break off (ORANGE arrows in the Step 1b Photo). The lens needs to be pried straight out to keep these clips intact.
- The five remaining clips (YELLOW circles in the Step 1b Photo) are a bit stronger, but they can also be a bit tough to release.

**NOTE:** If you're "lucky" like we were during this install, the clip which secures the entire lamp assembly up in the headliner will fall apart. We've put together a few photos on the next page in case this happens to you.



### Step 2a

- Be sure that the bulbs have had time to cool down, then remove them from the housing (not shown).
- Install the 8-chip T10 wedge bulbs (arrows in Step 2a Photo).
- Check to see if the bulbs light up when you set the dome light switch to 'on'.
- If an LED doesn't turn on:
  - Remove the LED from the housing
  - Rotate it 180°
  - Reinstall the LED and retest
  - The LED should now illuminate



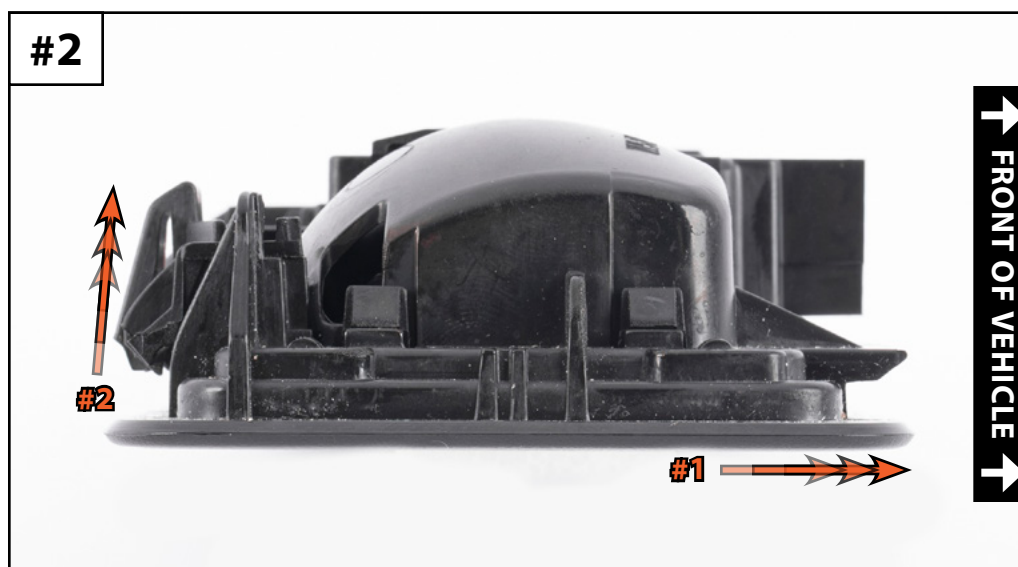
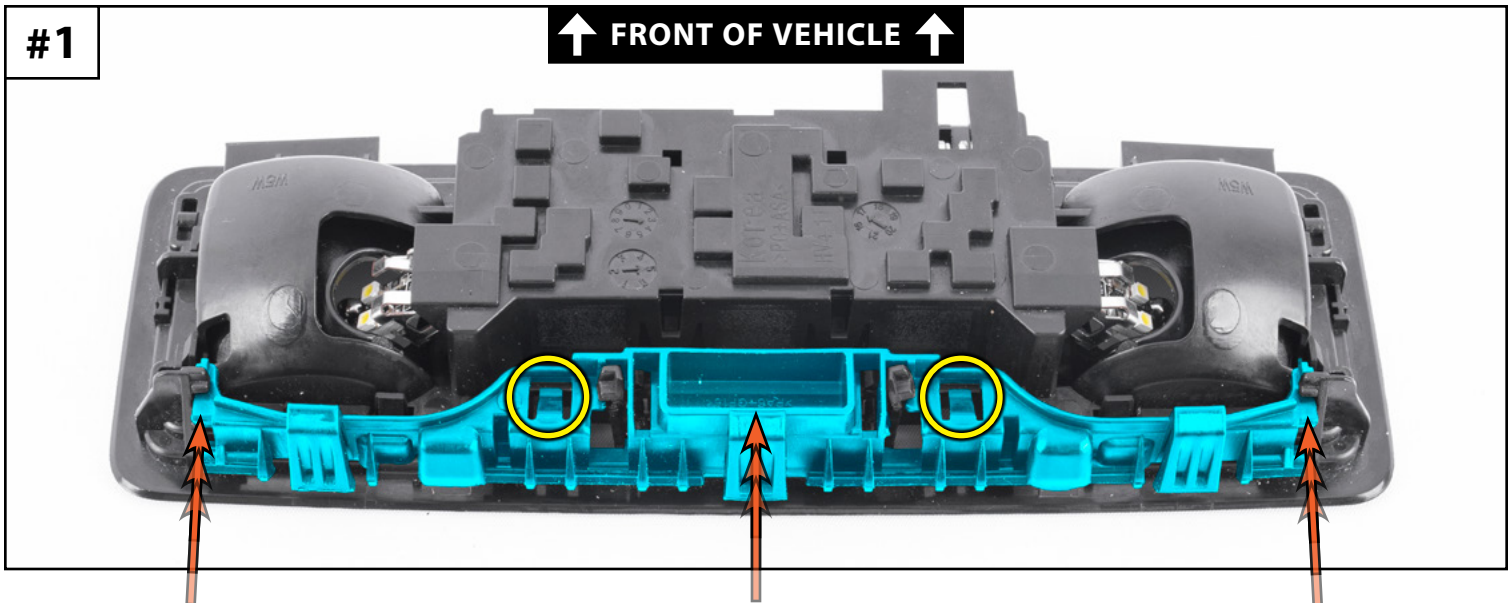
### Step 2b

- Reinstall the rear dome lamp lens (**Step 2b Photo**).

## Section 4: Rear Dome Lamp Installation

### NOTES:

- If your rear dome lamp housing remained intact inside the headliner you can skip this page.
- We mentioned that removing the lens from the rear dome lamp is probably the toughest part, this is why. If you're "lucky" like us, the clip (highlighted in **BLUE** in **Photo #1** below) which secures the housing inside the headliner will pop out, and the whole lamp housing will fall out of the headliner.
- This clip is anything but intuitive, trying to figure out how it's meant to be installed can be really tricky. We've included the photos below to help you reassemble the housing in case this happens to you.
- Here are a few things worth noting:
  - The clip needs to be inserted into the lamp housing from back-to-front, and there are two small clips (circled in **YELLOW** in **Photo #1**) which will hold the assembly together once they click into place.
  - Once the clip has been installed onto the lamp housing you can slide the front edge into the headliner, then swing the housing upward until it pops into place (see **Photo #2**).





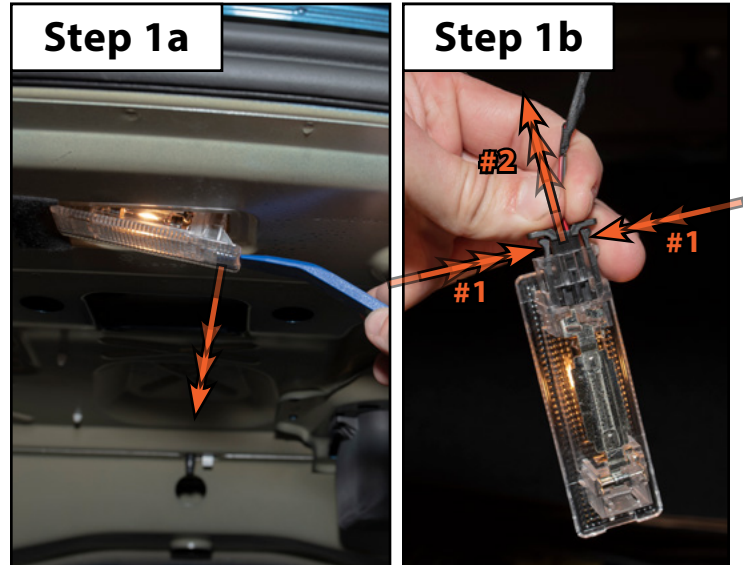
## Section 5: Trunk Lamp Installation

### Step 1a

- The trunk bulb is located underneath the rear shelf in the center of the trunk.
- Slide your non-marring trim tool into the notch in the side of the housing (see [Page 3](#)), release the spring clip and gently pry the housing out (**Step 1a photo**).

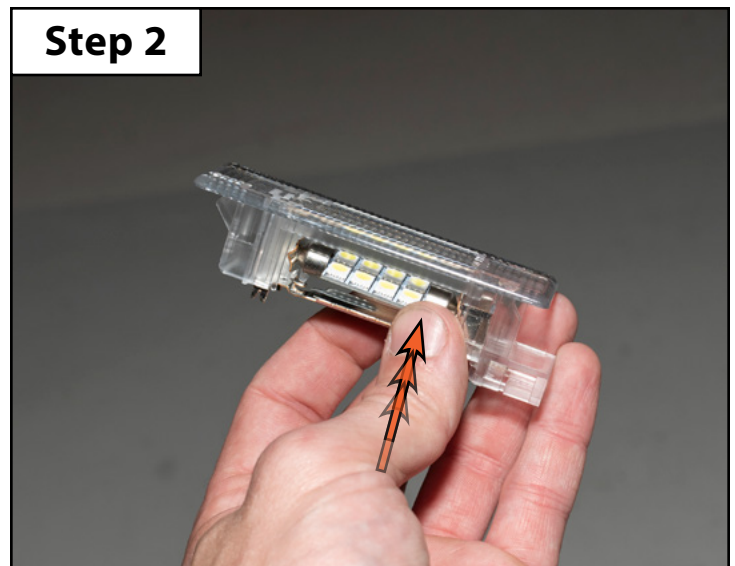
### Step 1b

- Disconnect the electrical connector by squeezing the tabs inward and pulling the connector free out of the housing (**Step 1b photo**).
- Be sure that the bulb has had time to cool down, then remove it from the housing (not shown).



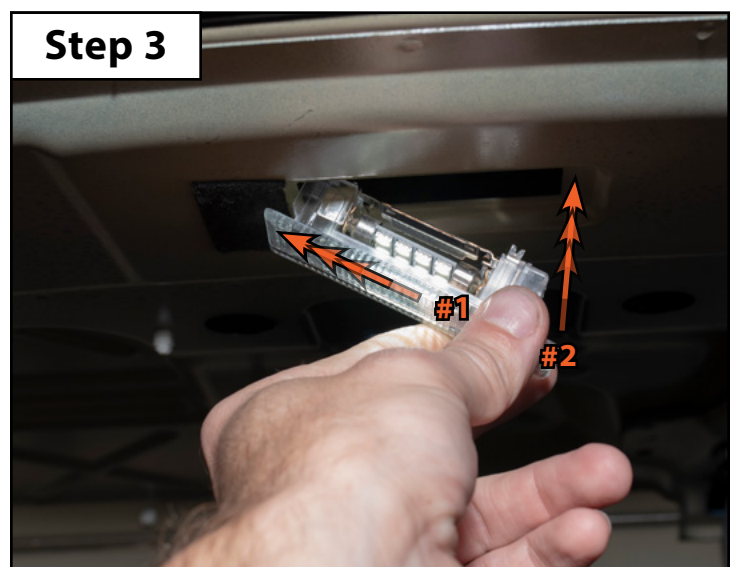
### Step 2

- Install the 8-chip 42mm festoon bulb.



### Step 3

- Reconnect the trunk lamp electrical connector and check to see if the bulb lights up.
- If the LED doesn't turn on:
  - Remove the bulb
  - Rotate it 180°
  - Reinstall the bulb and retest
  - The LED should now illuminate
- Reinstall the trunk lamp housing.



***Your LED Interior Lighting Kit  
installation is complete!***