

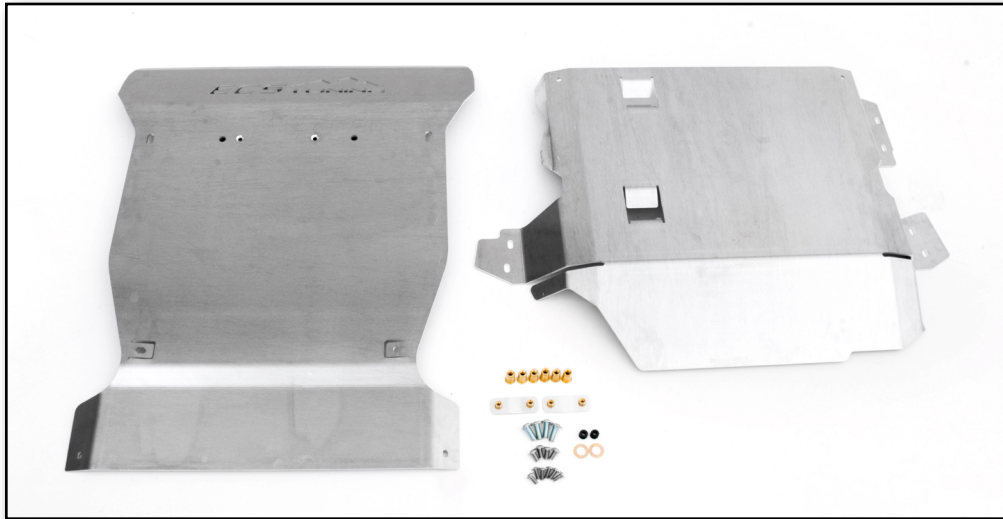


VW Touareg / Porsche Cayenne Overland Skid Plate Kit

Installation Instructions - [Click HERE to Shop](#)



Skill Level 2
- Moderate -
Some Experience
Recommended

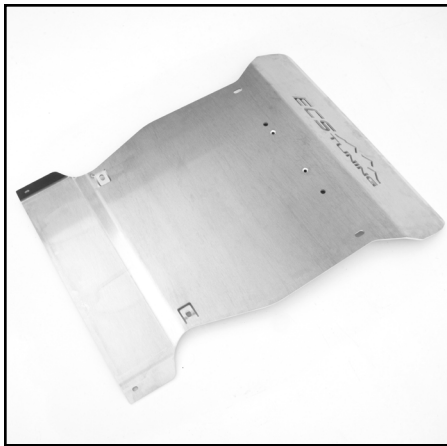


Proper service and repair procedures are vital to the safe, reliable operation of all motor vehicles as well as the personal safety of those performing the repairs. Standard safety procedures and precautions (including use of safety goggles and proper tools and equipment) should be followed at all times to eliminate the possibility of personal injury or improper service which could damage the vehicle or compromise its safety.

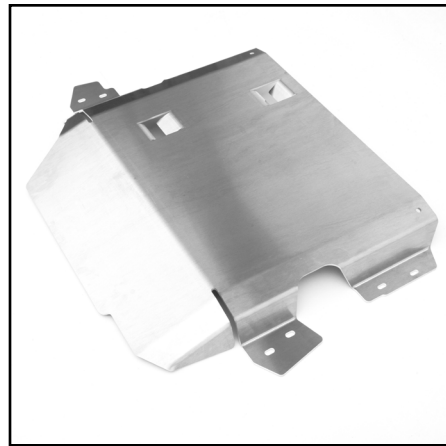
TABLE OF CONTENTS

Required Tools and Equipment.....	pg.3
Installation and Safety Information.....	pg.4
Removing the Stock Insulation Panels.....	pg.5
Installing the Optional Brace.....	pg.6
Installing the Front Skid Plate.....	pg.8
Installing the Rear Skid Plate.....	pg.11

KIT CONTENTS



Front Skid Plate



Rear Skid Plate



Hardware & Brackets



OPTIONAL Brace w/ Hardware

REQUIRED TOOLS

Note: The tools required for each step will be listed by the step number throughout these instructions.

Standard Automotive Tools

- Protecta-Sockets (for lug nuts)..... [ES#2221243](#)
- **3/8" Drive Ratchet**..... [ES#2765902](#)
- 3/8" Drive Torque Wrench..... [ES#2221245](#)
- **3/8" Drive Deep and Shallow Sockets** [ES#2763772](#)
- **3/8" Drive Extensions** [ES#2804822](#)
- **Hydraulic Floor Jack** [ES#2834951](#)
- **Torx Drivers and Sockets** [ES#11417/8](#)
- 1/2" Drive Deep and Shallow Sockets..... [ES#2839106](#)
- 1/2" Drive Ratchet
- 1/2" Drive Extensions
- 1/2" Drive Torque Wrench..... [ES#2221244](#)
- 1/2" Drive Breaker Bar [ES#2776653](#)
- Bench Mounted Vise
- Crows Foot Wrenches
- Hook and Pick Tool Set [ES#2778980](#)

Required For This Install

- **1/4" Drive Ratchet**..... [ES#2823235](#)
- **1/4" Drive Deep and Shallow Sockets**..... [ES#2823235](#)
- **1/4" Drive Extensions**..... [ES#2823235](#)
- Plier and Cutter Set..... [ES#2804496](#)
- Flat and Phillips Screwdrivers [ES#2225921](#)
- **Jack Stands** [ES#2763355](#)
- Ball Pein Hammers
- Pry Bar Set..... [ES#1899378](#)
- **Electric/Cordless Drill**
- Wire Strippers/Crimpers
- **Drill Bits**
- Punch and Chisel Set
- **Hex Bit (Allen) Wrenches and Sockets** [ES#11420](#)
- Thread Repair Tools [ES#1306824](#)
- Open/Boxed End Wrench Set [ES#2765907](#)

Available On Our Website

Specialty Tools

- **Riv Nut Installation Tool**..... [ES#4487724](#)

INSTALLATION NOTES

- **RH** refers to the *passenger side* of the vehicle.
- **LH** refers to the *driver side* of the vehicle.
- Always use the proper torque specifications.
- If applicable to this installation, torque specifications will be listed throughout the document and at the end as well.
- Please read all of these instructions and familiarize yourself with the complete process **BEFORE** you begin.

GENERAL PREPARATION AND SAFETY INFORMATION

ECS Tuning cares about your health and safety, please read the following safety information. This information pertains to automotive service in general, and while it may not pertain to every job you do, please remember and share these important safety tips.

- Park your car in a safe, well lit, level area.
- Shut the engine off and remove the key from the ignition switch.
- Make sure any remote start devices are properly disabled.
- **ALWAYS** wear safety glasses.
- Make sure the parking brake is applied until the vehicle is safely lifted and supported.
- Whether lifting a vehicle using an automotive lift or a hydraulic jack, be sure and utilize the factory specified lift points.
- Lifting a vehicle in an incorrect location can cause damage to the suspension/running gear.
- **ALWAYS** support the vehicle with jack stands.
- **ALWAYS** read and follow all safety information and warnings for the equipment you are using.

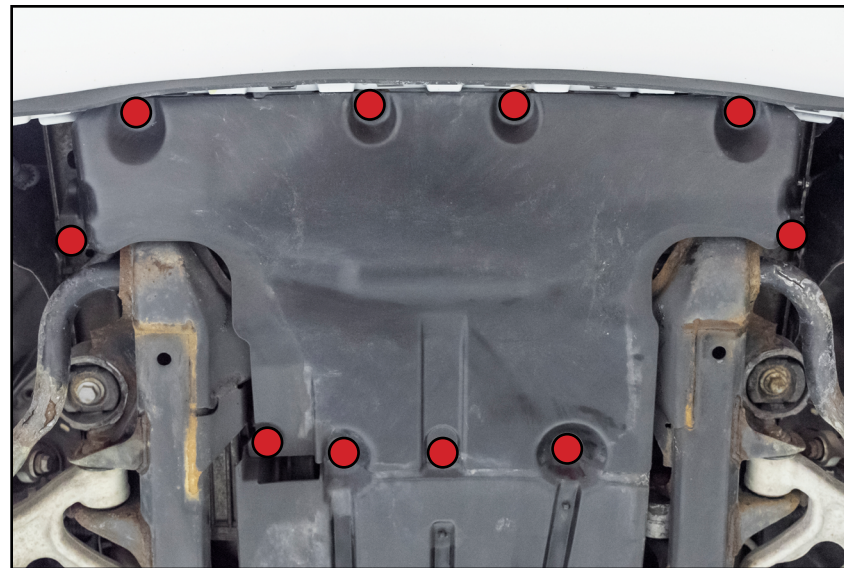


NEVER get underneath a vehicle that is supported only by a jack, and **ALWAYS** make sure that the vehicle is securely supported on jack stands.

REMOVING THE STOCK INSULATION PANELS

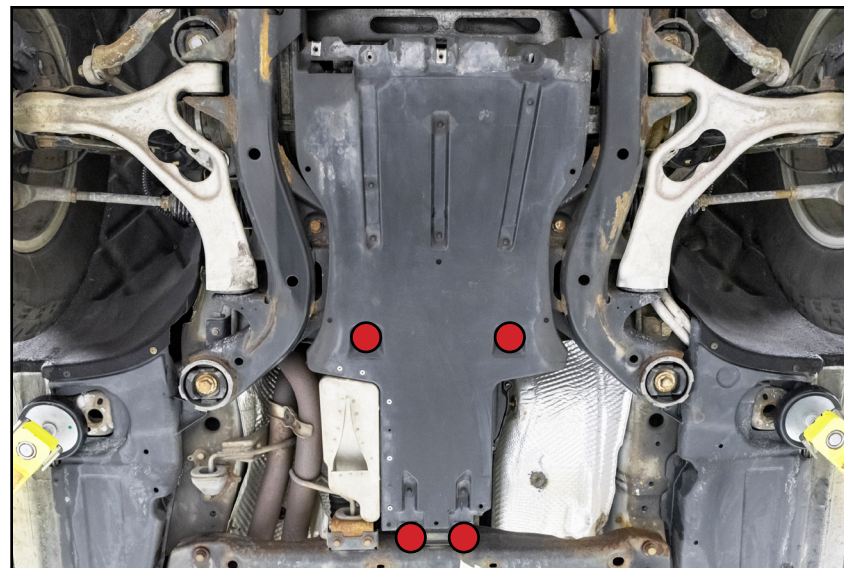
Step 1: T30 Torx -OR- 10mm Socket & Ratchet

Remove the ten screws (circled in **RED**) and remove the front insulation panel from the underside of the vehicle.



Step 2: T30 Torx -OR- 10mm Socket & Ratchet

Remove the four screws (circled in **RED**) and remove the rear insulation panel from the underside of the vehicle.



If you purchased the optional brace:

-Proceed to the next page for installation instructions.



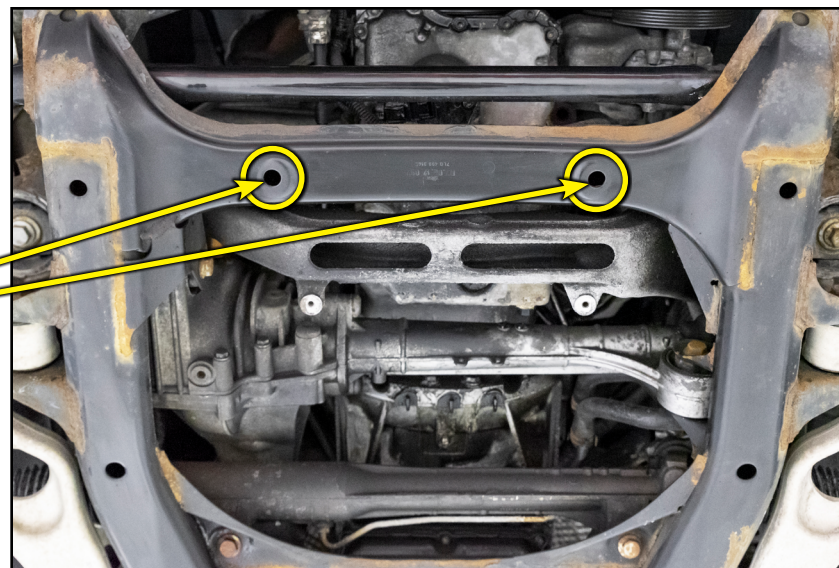
If you did not purchase the optional brace:

-Skip ahead to [Page 8](#).

INSTALLING THE OPTIONAL BRACE

Step 1: Drill, 17.5mm Drill Bit

Locate the two center holes (circled in **YELLOW**) in the front of the subframe and drill them out using a 17.5mm (or 11/16") drill bit (as shown in the inset photo below).

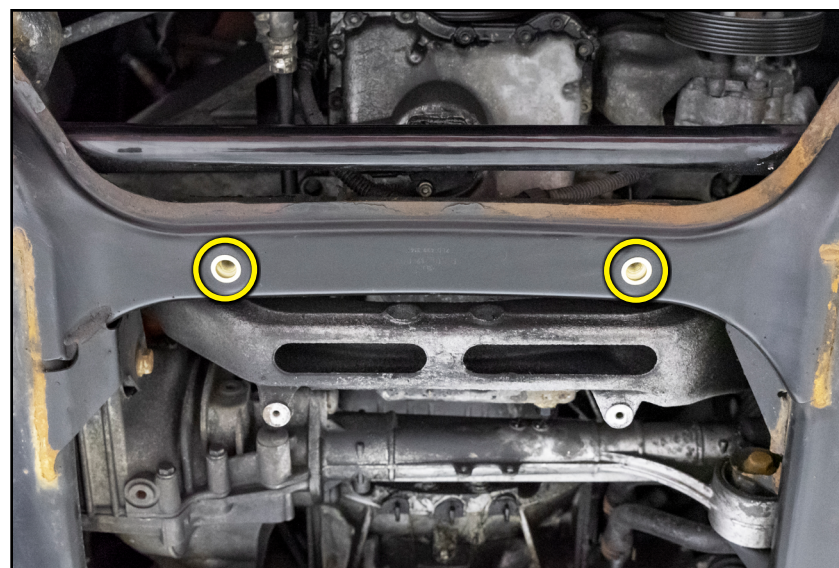


Step 2: Riv-nut Installation Tool

Install the provided riv-nuts (circled in **YELLOW**) into the holes we drilled.



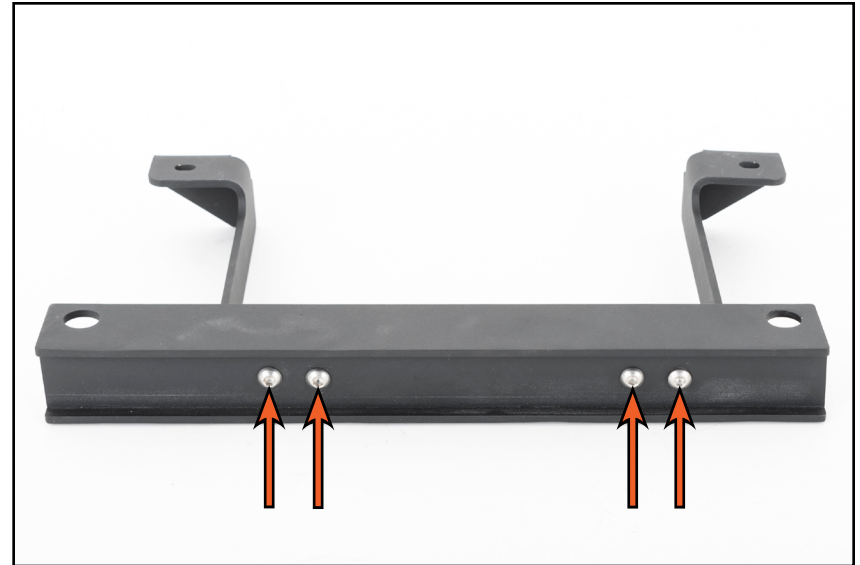
Our Schwaben riv-nut installation tool kit (available [HERE](#)) helps make installation of these riv-nuts a breeze.



INSTALLING THE OPTIONAL BRACE

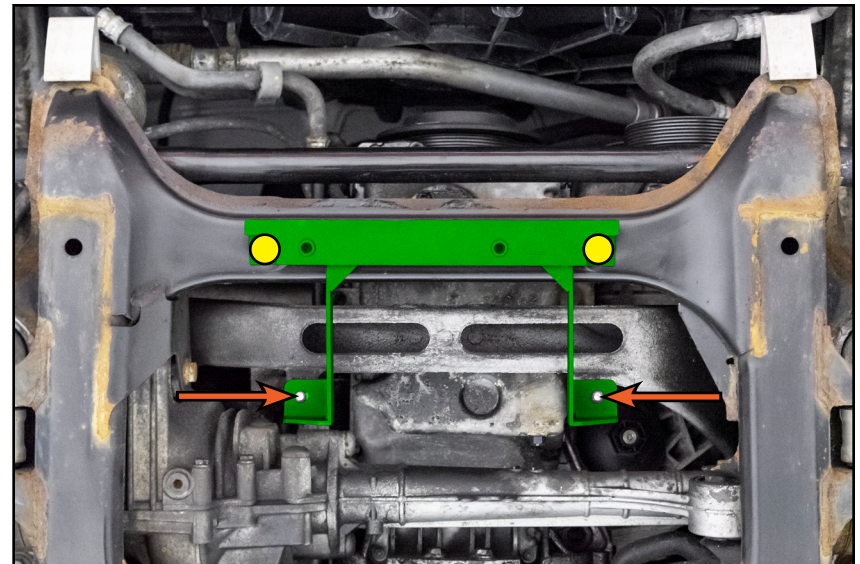
Step 3: 4mm Hex (Allen)

Assemble the brace as shown using the provided M6 screws (arrows).



Step 4: 4mm, 6mm Hex (Allen)

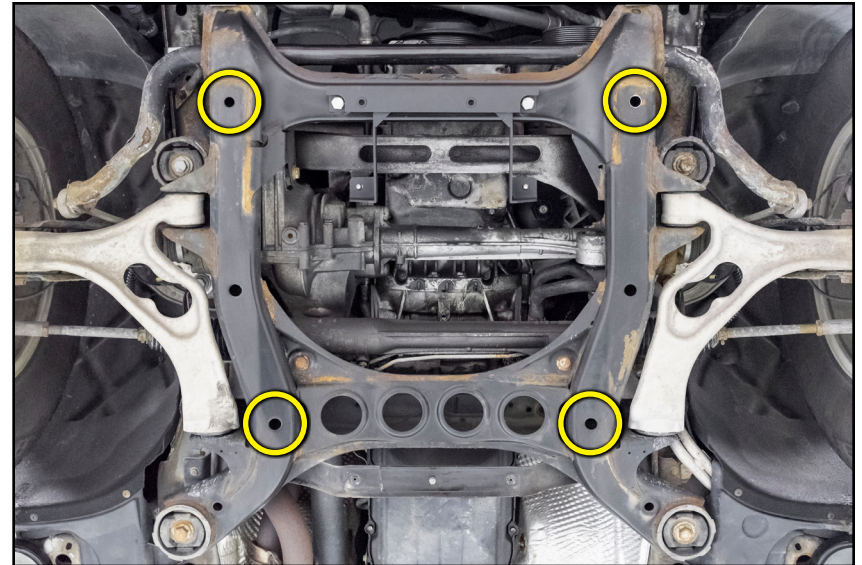
Lift the brace (highlighted in **GREEN**) up into place securing it with the provided M12 bolts (**YELLOW** circles) and M6 screws (arrows).



INSTALLING THE FRONT SKID PLATE

Step 1:

Locate the four holes (circled in **YELLOW**) on the underside of the subframe. We will be drilling and installing the provided riv-nuts in these locations.



Step 2: Drill, 17.5mm Drill Bit

Drill out each hole using a 17.5mm (or 11/16") drill bit as shown.



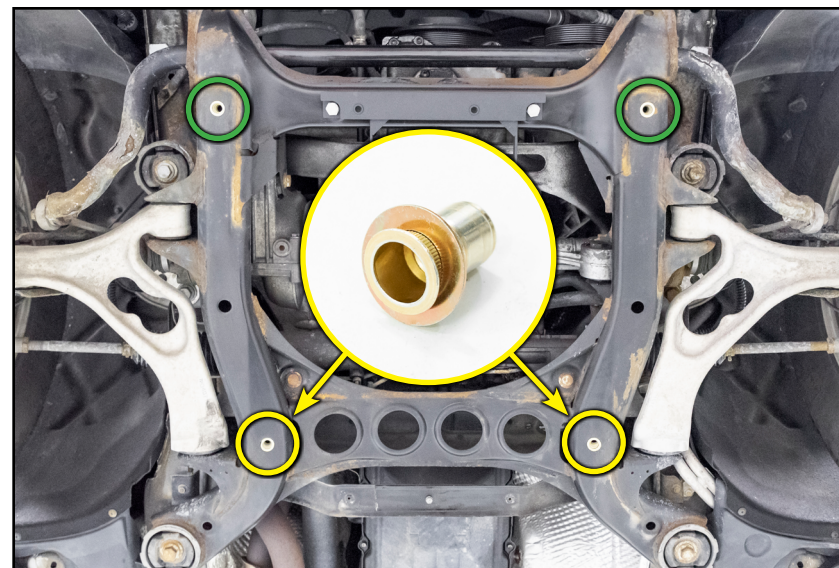
INSTALLING THE FRONT SKID PLATE

Step 3: Riv-nut Installation Tool

Install the two provided oversized washers onto two of the riv-nuts (as shown in inset photo), then install them into the rear two holes (circled in **YELLOW**) we drilled. Install the two remaining riv-nuts into the front two holes (circled in **GREEN**).

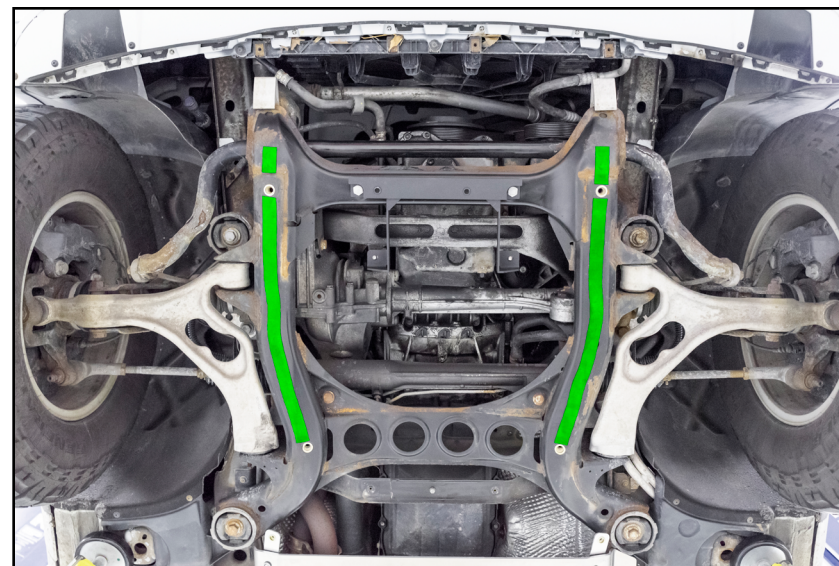


Our Schwaben riv-nut installation tool kit (available [HERE](#)) helps make installation of these riv-nuts a breeze.



Step 4:

Clean the underside of the subframe with rubbing alcohol and a clean cloth, then apply the provided adhesive rubber strips (highlighted in **GREEN**).



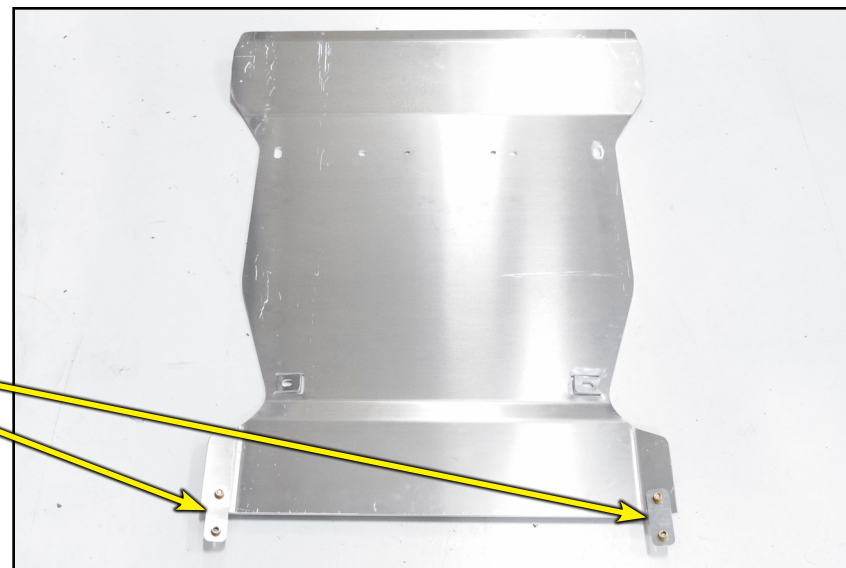
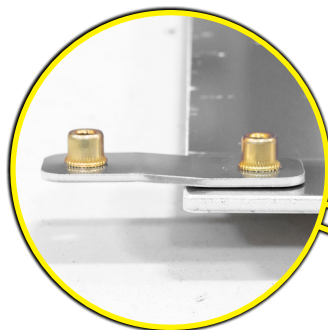
INSTALLING THE FRONT SKID PLATE

Step 5: 4mm Hex (Allen)

Install the provided brackets onto the rear of the front skid plate as shown using the provided M6 bolts.



The brackets have a slight offset to allow for clearance of the grommets in the mid skid plate. Ensure that the brackets are installed with the raised side facing out.

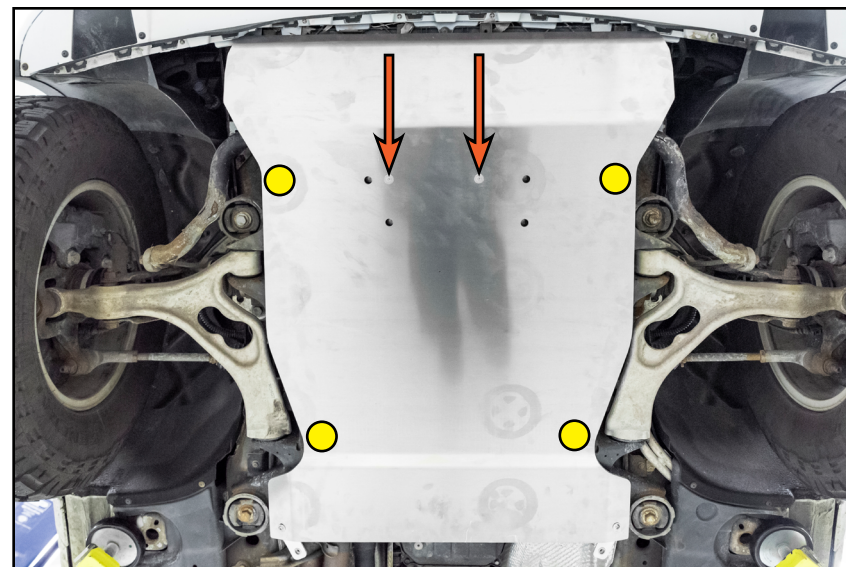


Step 6: 6mm Hex (Allen)

Lift the front skid plate onto the vehicle and secure it in place with the four provided M12 bolts (circled in **YELLOW**).



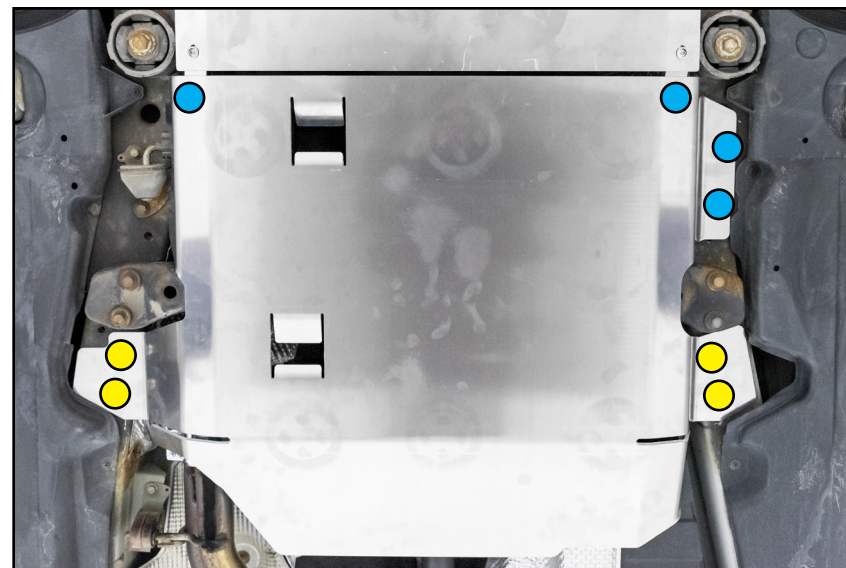
If you purchased the optional brace, install the two countersunk bolts (arrows) to secure the skid plate to the brace. If needed, you can use the access holes to loosen the bolts which secure the brace to the subframe and adjust it before tightening them back down.



INSTALLING THE REAR SKID PLATE

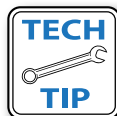
Step 1: 4mm, 5mm Hex (Allen)

Lift the rear skid plate onto the vehicle and secure it in place with the four provided M8 bolts (circled in **YELLOW**) and four M6 bolts (circled in **BLUE**).

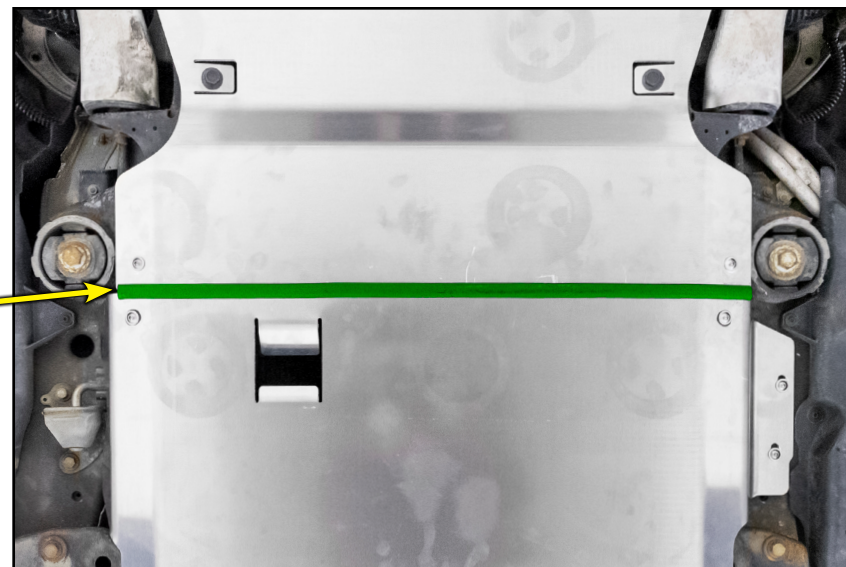
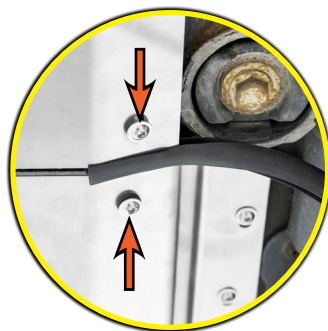


Step 2:

Install the rubber isolator channel (highlighted in **GREEN**), between the two skid plates.



Loosen the bracket bolts (arrows in inset photo), lubricate the channel with silicone, then, starting at one side, slide it in until it's fully installed before tightening the bolts back down.



Congratulations, your installation is complete!

Your Overland Skid Plate Kit installation is complete!



These instructions are provided as a courtesy by ECS Tuning

Proper service and repair procedures are vital to the safe, reliable operation of all motor vehicles as well as the personal safety of those performing the repairs. Standard safety procedures and precautions (including use of safety goggles and proper tools and equipment) should be followed at all times to eliminate the possibility of personal injury or improper service which could damage the vehicle or compromise its safety.

Although this material has been prepared with the intent to provide reliable information, no warranty (express or implied) is made as to its accuracy or completeness. Neither is any liability assumed for loss or damage resulting from reliance on this material. SPECIFICALLY, NO WARRANTY OF MERCHANTABILITY, FITNESS FOR A PARTICULAR PURPOSE OR ANY OTHER WARRANTY IS MADE OR TO BE IMPLIED WITH RESPECT TO THIS MATERIAL. In no event will ECS Tuning, Incorporated or its affiliates be liable for any damages, direct or indirect, consequential or compensatory, arising out of the use of this material.