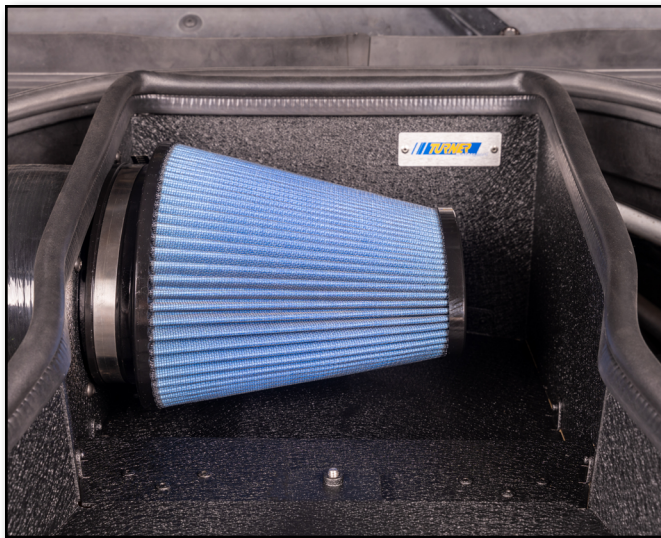
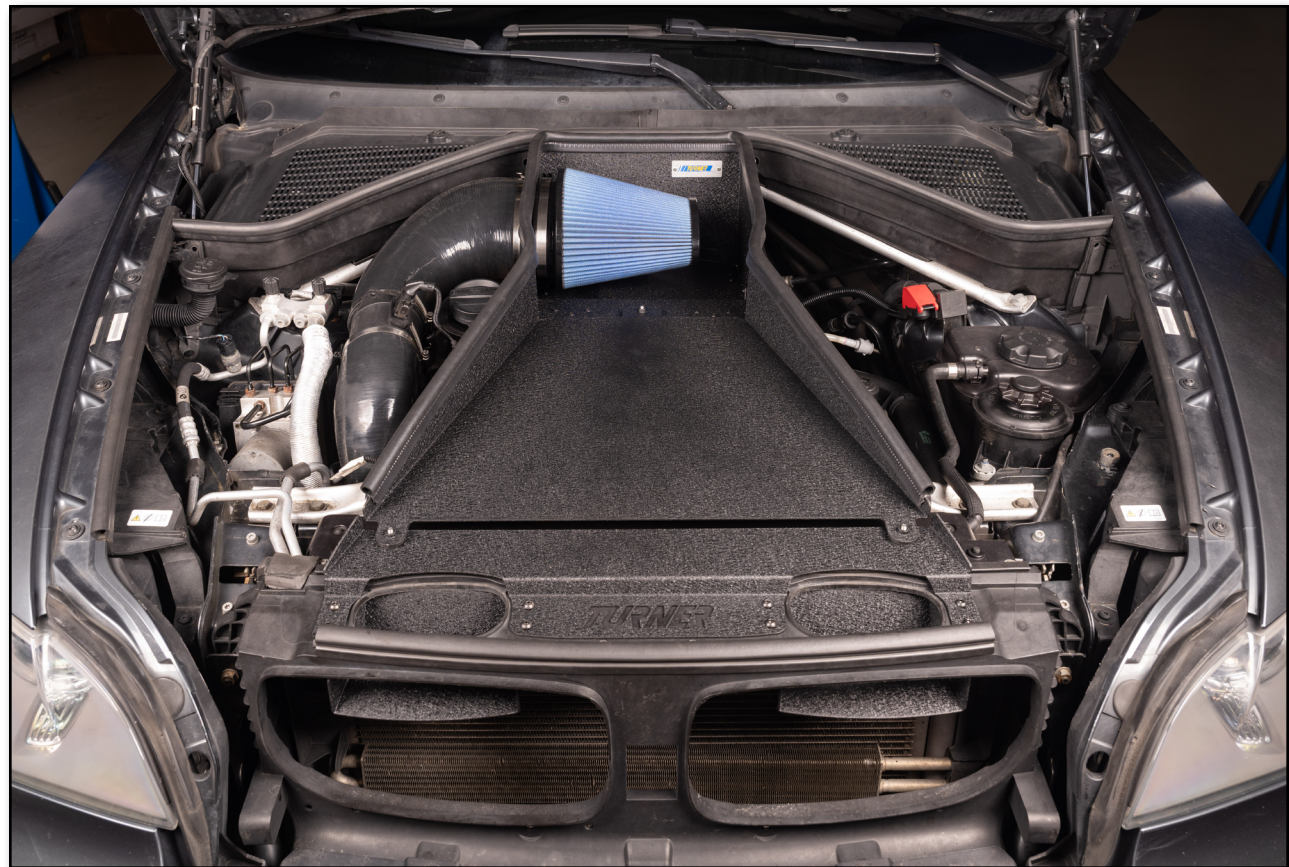




# BMW E70 X5 35d Intake System Installation Instructions



Proper service and repair procedures are vital to the safe, reliable operation of all motor vehicles as well as the personal safety of those performing the repairs. Standard safety procedures and precautions (including use of safety goggles and proper tools and equipment) should be followed at all times to eliminate the possibility of personal injury or improper service which could damage the vehicle or compromise its safety.

## INSTALLATION NOTES

- **RH** refers to the *passenger side* of the vehicle.
- **LH** refers to the *driver side* of the vehicle.
- Always use the proper torque specifications.
- If applicable to this installation, torque specifications will be listed throughout the document and at the end as well.
- Please read all of these instructions and familiarize yourself with the complete process **BEFORE** you begin.

## GENERAL PREPARATION AND SAFETY INFORMATION

Turner Motorsport cares about your health and safety, please read the following safety information. This information pertains to automotive service in general, and while it may not pertain to every job you do, please remember and share these important safety tips.

- Park your car in a safe, well lit, level area.
- Shut the engine off and remove the key from the ignition switch.
- Make sure any remote start devices are properly disabled.
- **ALWAYS** wear safety glasses.
- Make sure the parking brake is applied until the vehicle is safely lifted and supported.
- Whether lifting a vehicle using an automotive lift or a hydraulic jack, be sure and utilize the factory specified lift points.
- Lifting a vehicle in an incorrect location can cause damage to the suspension/running gear.
- **ALWAYS** support the vehicle with jack stands.
- **ALWAYS** read and follow all safety information and warnings for the equipment you are using.



**NEVER** get underneath a vehicle that is supported only by a jack, and **ALWAYS** make sure that the vehicle is securely supported on jack stands.

## REMOVING THE STOCK INTAKE SYSTEM

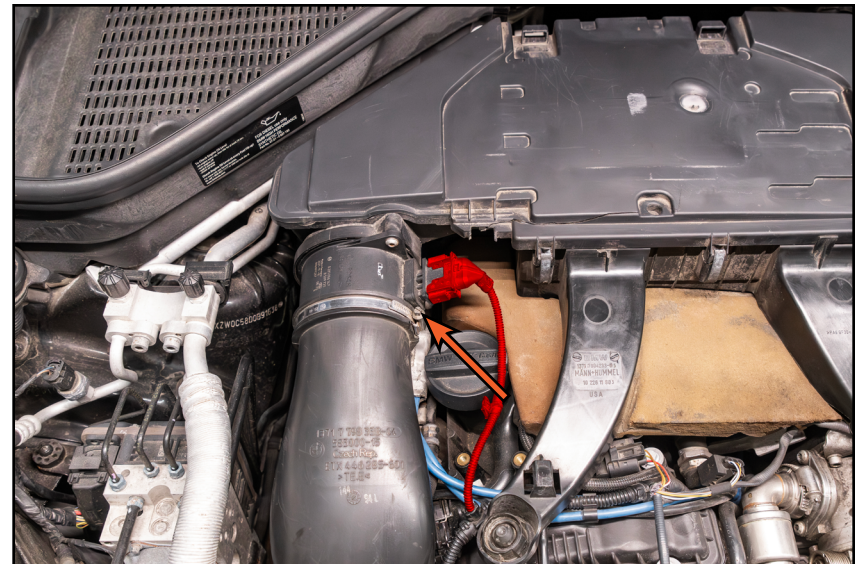
### Step 1: Trim Removal Tool

Lift up on the engine cover to pop it free from its mounting grommets, then remove the inlet duct (highlighted in **RED**) from between the core support and airbox.



### Step 2: 6mm Socket & Ratchet

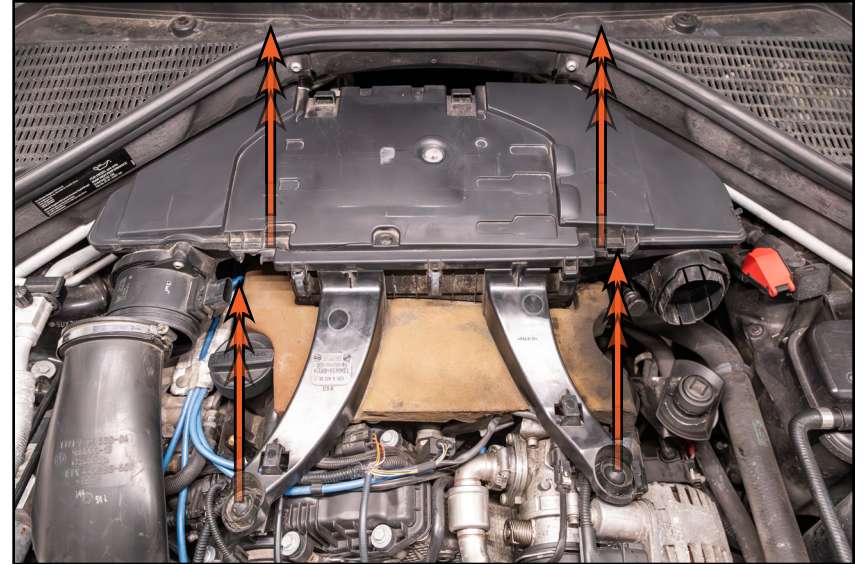
Disconnect the MAF sensor connector (highlighted in **RED**), then loosen the clamp (arrow) and pull the intake hose off of the MAF sensor.



## REMOVING THE STOCK INTAKE SYSTEM

### Step 3:

Lift up on the airbox to pop it free from its mounting grommets, then carefully guide it free from the vehicle.



### Step 4: 6mm Socket & Ratchet

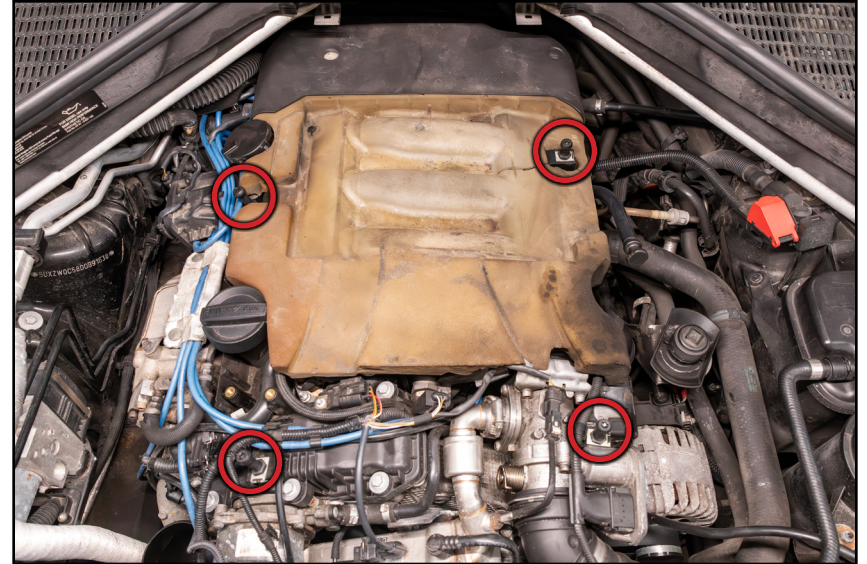
Free up the wires and hoses clipped to the intake hose, then loosen the clamp (arrow) and remove the intake hose.



## REMOVING THE STOCK INTAKE SYSTEM

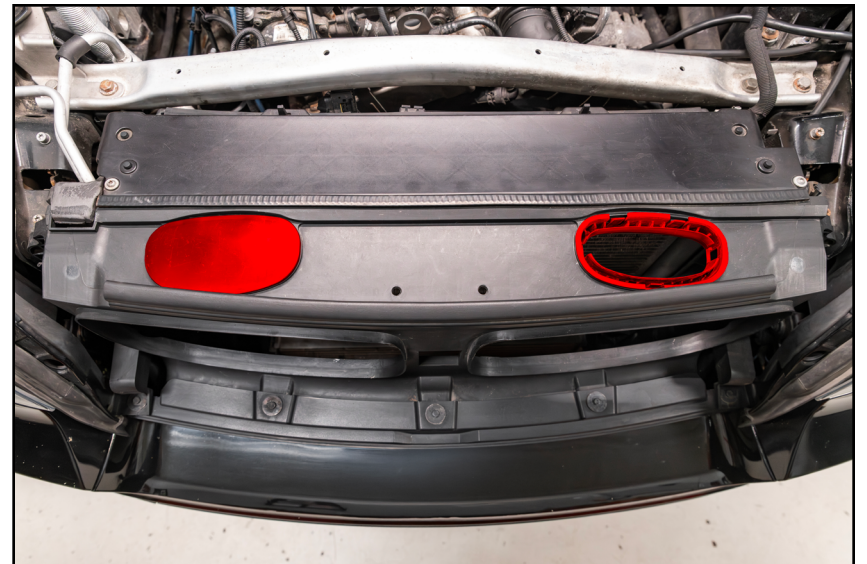
### Step 5: T30 Torx Socket & Ratchet

Remove the four airbox mounting studs (circled in **RED**) from the clip nuts on the engine.



### Step 6: Trim Removal Tool

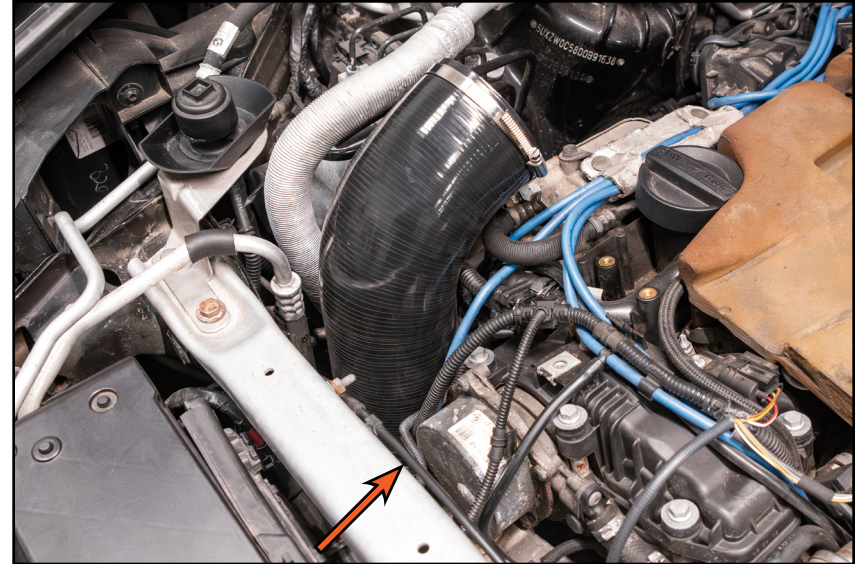
Remove the inlet duct flange and plastic cover (highlighted in **RED**) from the core support.



## INSTALLING THE NEW INTAKE SYSTEM

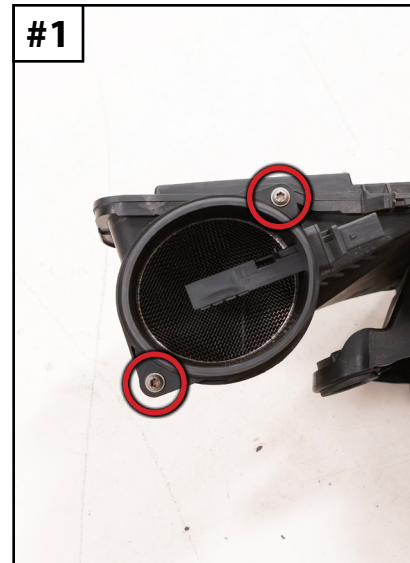
### Step 1: 7mm Socket & Ratchet

Slide the new lower intake hose onto the turbo inlet, ensuring it is fully seated, then tighten the clamp (arrow) until snug.



### Step 2: T25 Torx, 7mm Socket & Ratchet

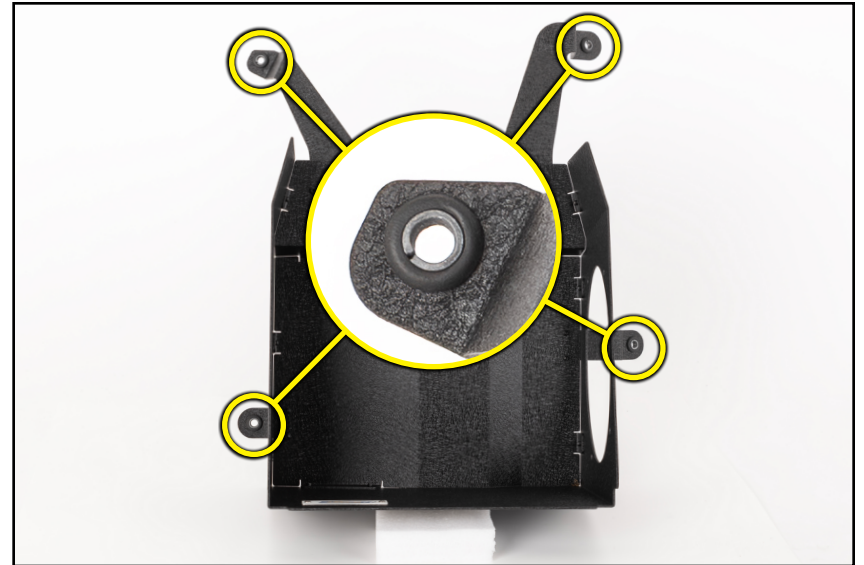
Remove the two screws (circled in **RED** in **Photo #1**) that secures the MAF sensor to the airbox, then transfer the MAF sensor to the new intake hose as shown and tighten the clamp (arrow in **Photo #2**) until snug.



## INSTALLING THE NEW INTAKE SYSTEM

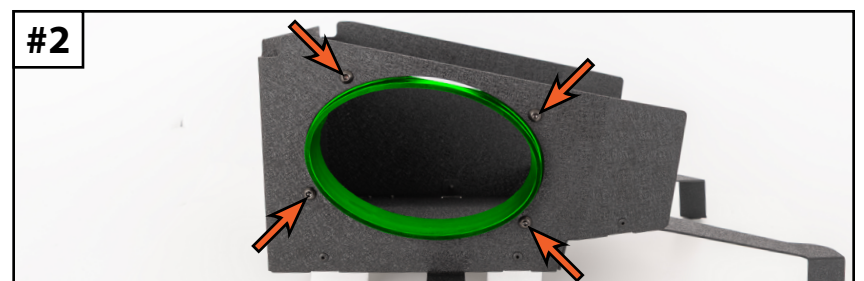
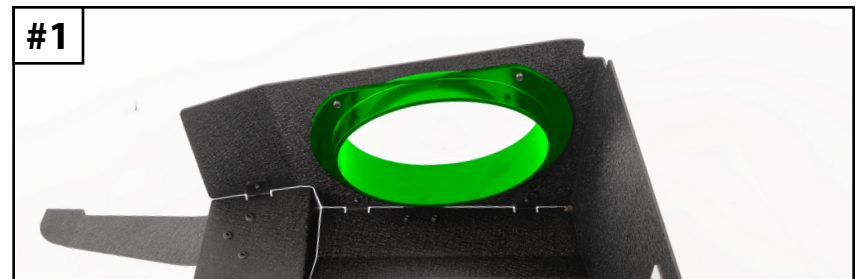
### Step 3:

Install the provided grommets and spacers (circled in **YELLOW**) into the mounting tabs on the new heat shield as shown.



### Step 4: 4mm Hex (Allen) Socket & Ratchet

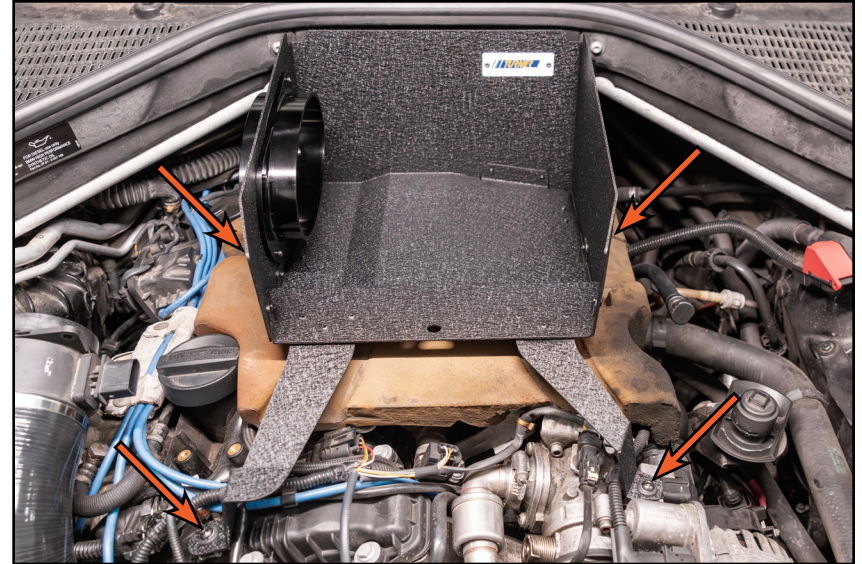
Install the air filter adapter (highlighted in **GREEN**) into the opening on the side of the heat shield, ensuring the flanged side sits inside the heat shield (as shown in **Photo #1**). Then, install the provided M6 x 10mm screws (arrows in **Photo #2**) to secure it in place.



## INSTALLING THE NEW INTAKE SYSTEM

### Step 5: 4mm Hex (Allen) Socket & Ratchet

Guide the assembled heat shield into place and install the provided M6 x 20mm screws (arrows) to secure the mounting tabs to the airbox mounting clip nuts.



### Step 6: 7mm Socket & Ratchet

Install the new upper intake hose between the MAF sensor and the air filter adapter and tighten the clamps (arrows) until snug.



## INSTALLING THE NEW INTAKE SYSTEM

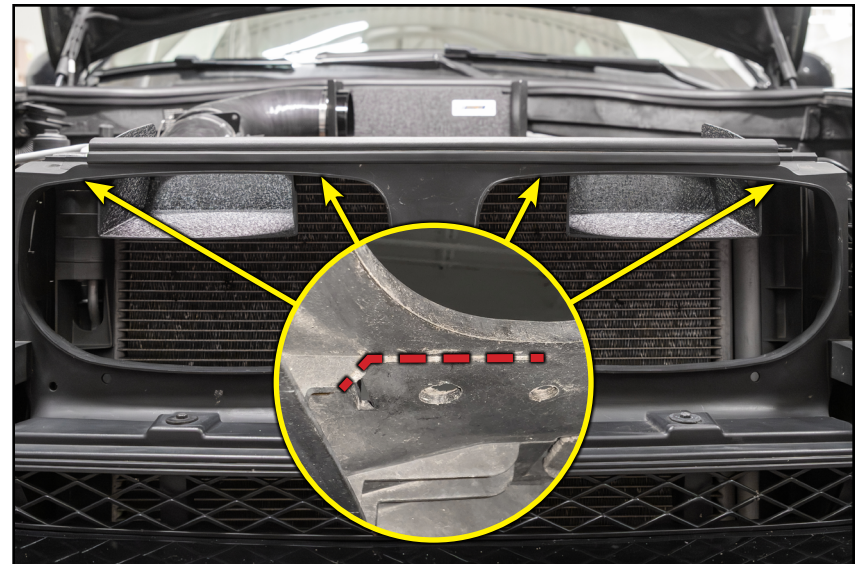
### Step 7: 1/4" Drill Bit & Drill

Lay the front mounting bracket onto the core support as shown. Mark the location of each hole (arrows in **Photo #1**), then remove the bracket and drill 1/4" holes at each mark (as shown in **Photo #2**).



### Step 8: Razor Blade

Lift each air scoop up into place as shown and trim any plastic castings on the inside of the core support that prevent the air scoops from sitting flush against the bottom of the core support.



## INSTALLING THE NEW INTAKE SYSTEM

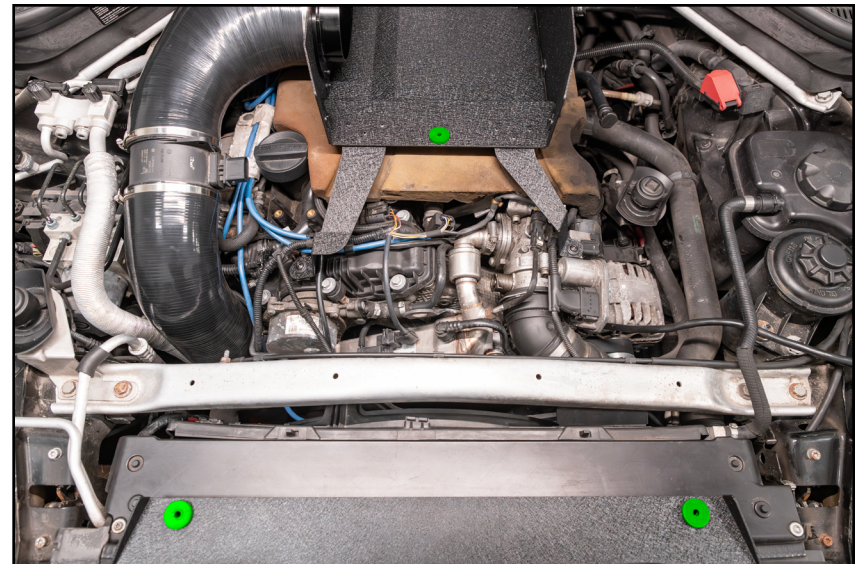
### Step 9: 4mm Hex (Allen) Socket & Ratchet

Lay the front mounting bracket back into place and install the M6 x 10mm screws (arrows) to secure the bracket to the air scoops.



### Step 10:

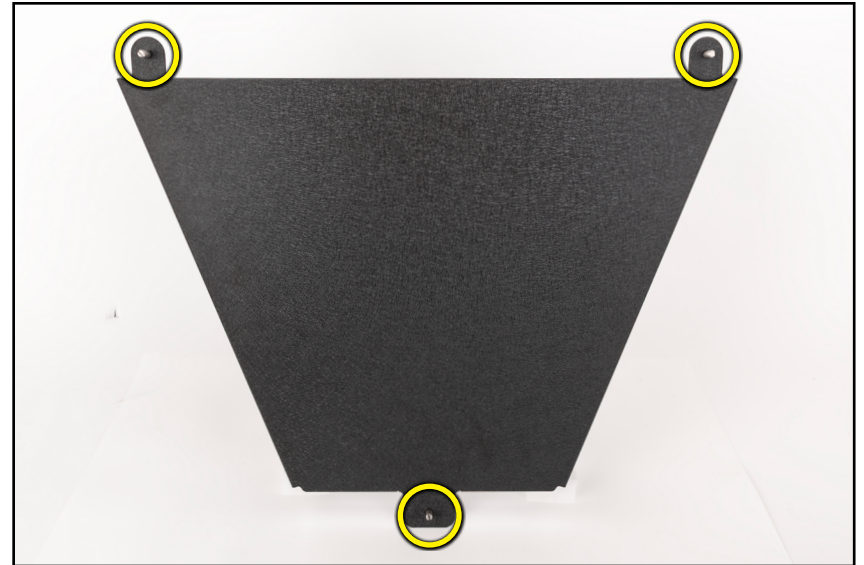
Install the provided mounting grommets (highlighted in **GREEN**) into the holes in the heat shield and front mounting bracket.



## INSTALLING THE NEW INTAKE SYSTEM

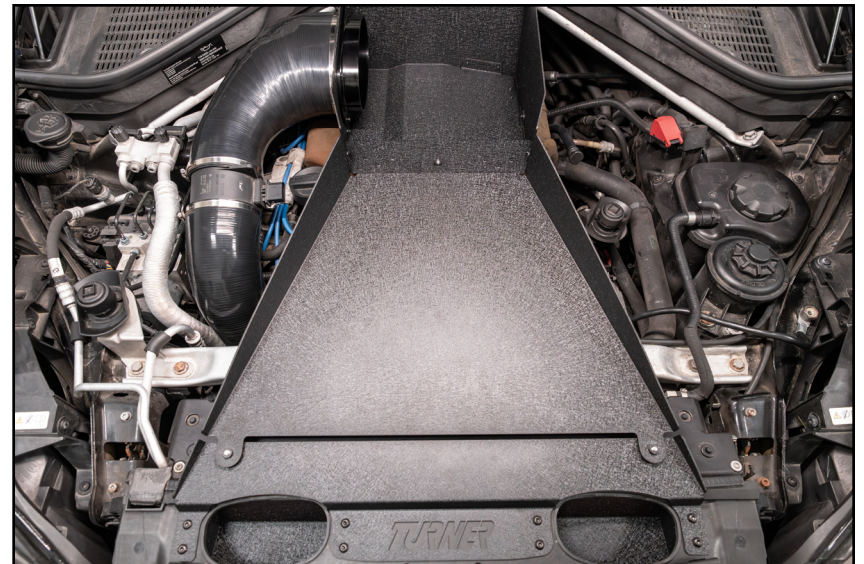
### Step 11:

Install the provided mounting posts (circled in **YELLOW**) into the bottom of the new inlet duct



### Step 12:

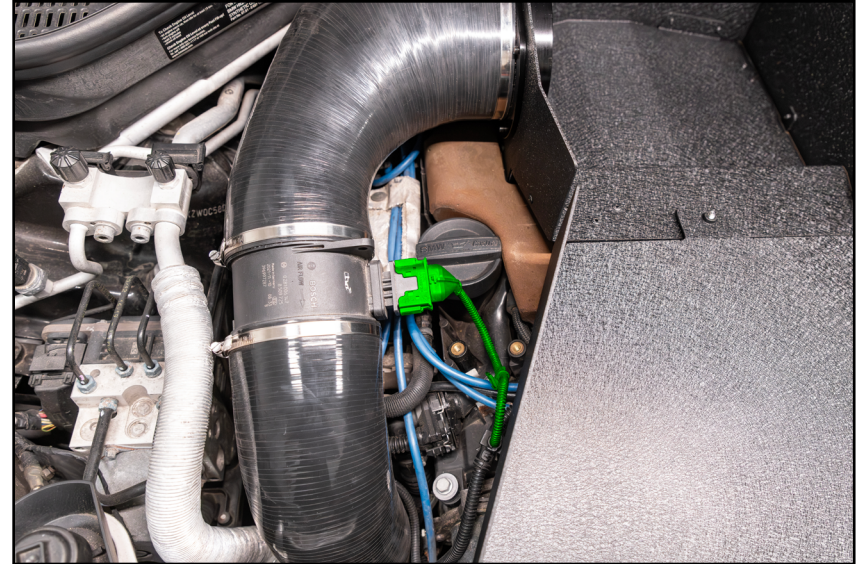
Lay the inlet duct into place between the heat shield and front mounting bracket, ensuring the mounting posts slide into the mounting grommets.



## INSTALLING THE NEW INTAKE SYSTEM

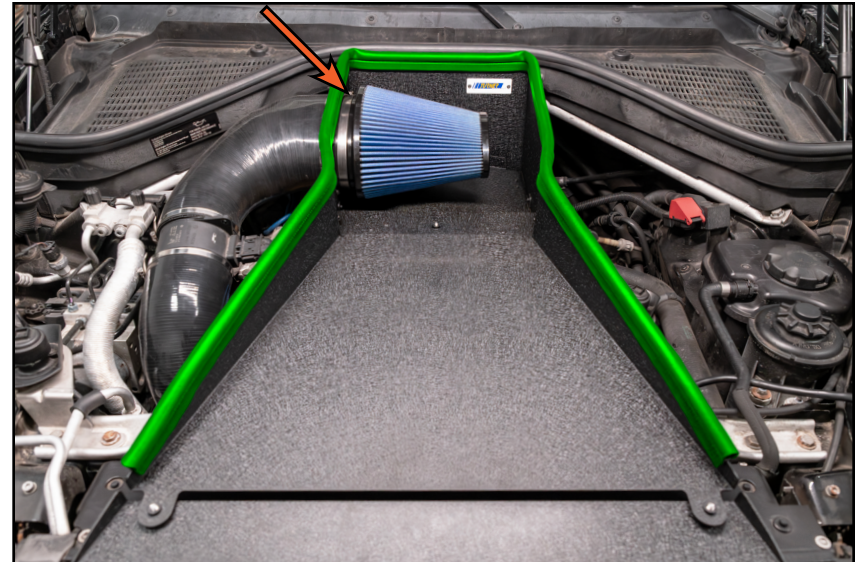
### Step 13:

Reconnect the MAF sensor connector (highlighted in **GREEN**).



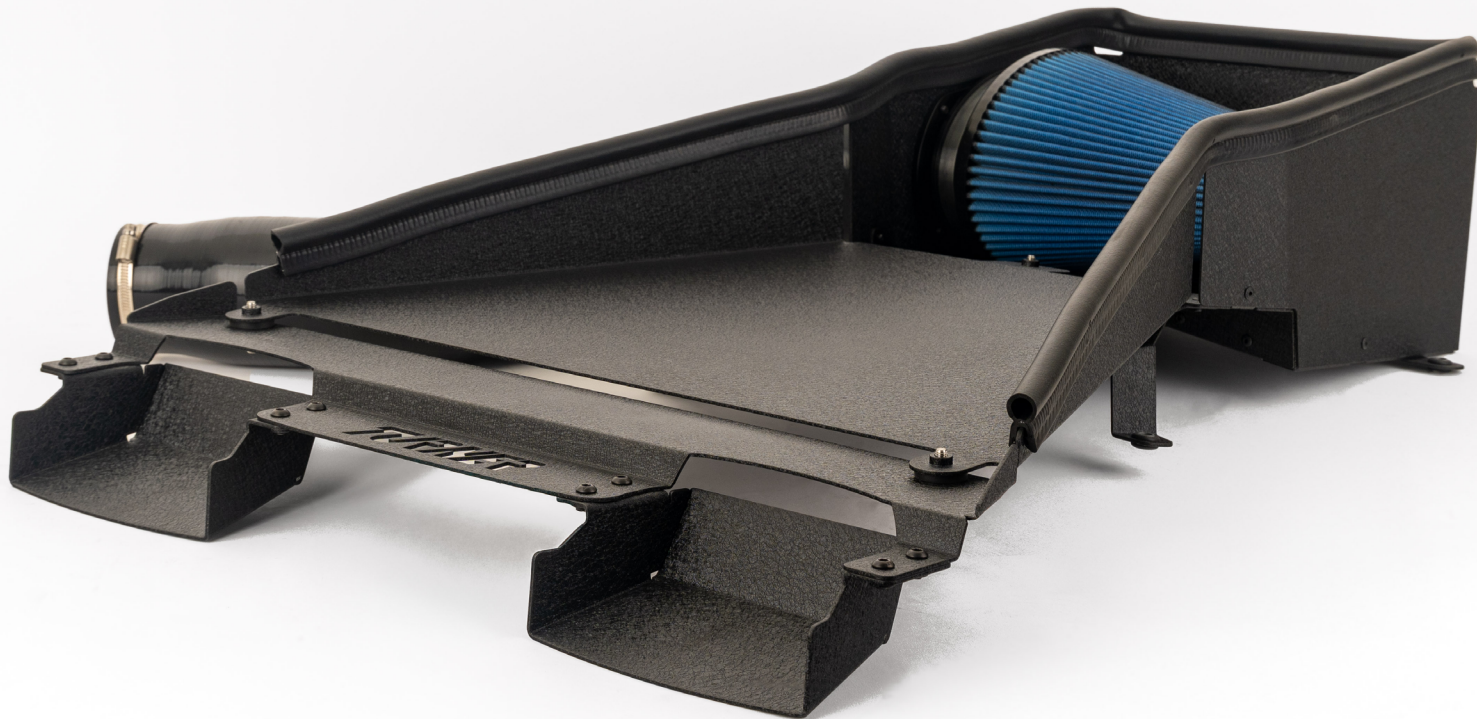
### Step 14: 8mm Socket & Ratchet

Slide the provided air filter onto the air filter adapter and tighten the clamp (arrow) until snug. Apply the provided bulb seal (highlighted in **GREEN**) along the top of the heat shield and inlet duct as shown.



***Congratulations, your installation is complete!***

## Your Intake System installation is complete!



### **These instructions are provided as a courtesy by Turner Motorsport**

Proper service and repair procedures are vital to the safe, reliable operation of all motor vehicles as well as the personal safety of those performing the repairs. Standard safety procedures and precautions (including use of safety goggles and proper tools and equipment) should be followed at all times to eliminate the possibility of personal injury or improper service which could damage the vehicle or compromise its safety.

Although this material has been prepared with the intent to provide reliable information, no warranty (express or implied) is made as to its accuracy or completeness. Neither is any liability assumed for loss or damage resulting from reliance on this material. SPECIFICALLY, NO WARRANTY OF MERCHANTABILITY, FITNESS FOR A PARTICULAR PURPOSE OR ANY OTHER WARRANTY IS MADE OR TO BE IMPLIED WITH RESPECT TO THIS MATERIAL. In no event will Turner Motorsport, Incorporated or its affiliates be liable for any damages, direct or indirect, consequential or compensatory, arising out of the use of this material.