



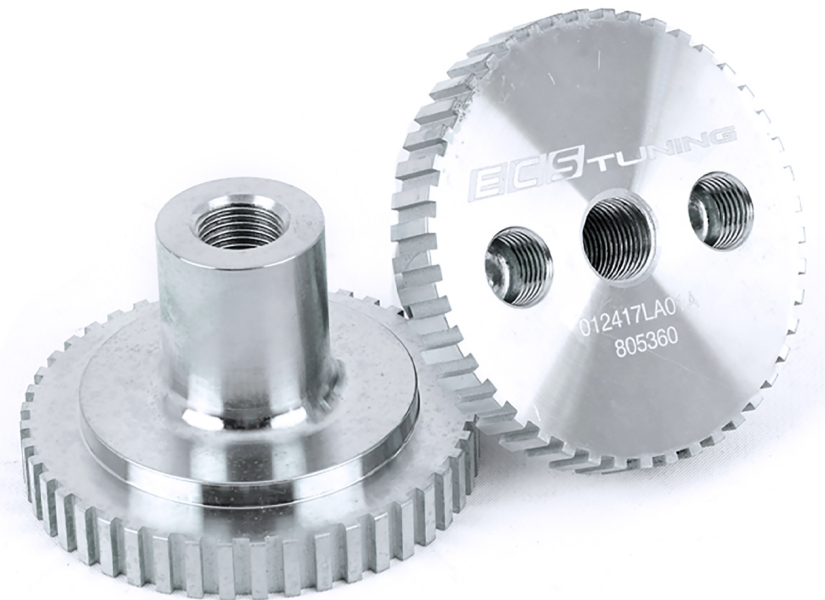
Audi B5-B8 Front Axle Delete Plugs
Installation Instructions - [Click HERE to Shop](#)



Skill Level
2 - Moderate
Some Experience
Recommended



*B8 axle delete plugs shown here



*B5-B7 axle delete plugs shown here

REQUIRED TOOLS

Note: The tools required for each step will be listed by the step number throughout these instructions.

Standard Automotive Tools

- **Protecta-Sockets (for lug nuts)** [ES#2221243](#)
- **3/8" Drive Ratchet** [ES#2765902](#)
- **3/8" Drive Torque Wrench** [ES#2221245](#)
- **3/8" Drive Deep and Shallow Sockets** [ES#2763772](#)
- **3/8" Drive Extensions** [ES#2804822](#)
- **Hydraulic Floor Jack** [ES#2834951](#)
- Torx Drivers and Sockets [ES#11417/8](#)
- **1/2" Drive Deep and Shallow Sockets** [ES#2839106](#)
- **1/2" Drive Ratchet**
- 1/2" Drive Extensions
- **1/2" Drive Torque Wrench** [ES#2221244](#)
- **1/2" Drive Breaker Bar** [ES#2776653](#)
- Bench Mounted Vise
- Crows Foot Wrenches
- Hook and Pick Tool Set [ES#2778980](#)

Required For This Install

- 1/4" Drive Ratchet [ES#2823235](#)
- 1/4" Drive Deep and Shallow Sockets [ES#2823235](#)
- 1/4" Drive Extensions [ES#2823235](#)
- Plier and Cutter Set [ES#2804496](#)
- **Flat and Phillips Screwdrivers** [ES#2225921](#)
- **Jack Stands** [ES#2763355](#)
- **Ball Pein Hammers**
- **Pry Bar Set** [ES#1899378](#)
- Electric/Cordless Drill
- Wire Strippers/Crimpers
- Drill Bits
- **Punch and Chisel Set**
- **Hex Bit (Allen) Wrenches and Sockets** [ES#11420](#)
- Thread Repair Tools [ES#1306824](#)
- **Open/Boxed End Wrench Set** [ES#2765907](#)

Available On Our Website

Specialty Tools

- **(If needed) 19mm Hex Bit (Allen) Socket** [ES#4336716](#)
- **Triple Square Socket Set** [ES#2093758/ES#9011](#)

INSTALLATION NOTES

- **RH** refers to the *passenger side* of the vehicle.
- **LH** refers to the *driver side* of the vehicle.
- Always use the proper torque specifications.
- If applicable to this installation, torque specifications will be listed throughout the document and at the end as well.
- Please read all of these instructions and familiarize yourself with the complete process **BEFORE** you begin.

GENERAL PREPARATION AND SAFETY INFORMATION

ECS Tuning cares about your health and safety, please read the following safety information. This information pertains to automotive service in general, and while it may not pertain to every job you do, please remember and share these important safety tips.

- Park your car in a safe, well lit, level area.
- Shut the engine off and remove the key from the ignition switch.
- Make sure any remote start devices are properly disabled.
- **ALWAYS** wear safety glasses.
- Make sure the parking brake is applied until the vehicle is safely lifted and supported.
- Whether lifting a vehicle using an automotive lift or a hydraulic jack, be sure and utilize the factory specified lift points.
- Lifting a vehicle in an incorrect location can cause damage to the suspension/running gear.
- **ALWAYS** support the vehicle with jack stands.
- **ALWAYS** read and follow all safety information and warnings for the equipment you are using.

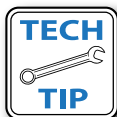


NEVER get underneath a vehicle that is supported only by a jack, and **ALWAYS** make sure that the vehicle is securely supported on jack stands.

INSTALLING THE AXLE DELETE PLUGS

Step 1: 17mm -OR- 19mm Hex (Allen) Socket & Breaker Bar

Safely lift and support the vehicle and remove the front wheels. Remove each axle bolt (arrow).

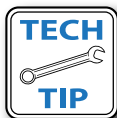


Placing a large screwdriver into the rotor fins can help break the axle bolt free. As you begin to loosen the bolt the screwdriver will be wedged against the caliper, preventing the hub from rotating. Just be sure to use a cloth to prevent damage to the caliper finish.



Step 2: M8 -OR- M10 Triple Square Socket and Ratchet

Remove the six bolts (arrows) which secure the axle to the axle flange.



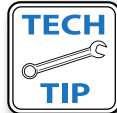
Leaving the large screwdriver in the rotor fins can help break these bolts free as well. Remove the screwdriver, rotate the hub until a bolt is easily accessible, then reinstall the screwdriver before breaking it free. Repeat for all six bolts.



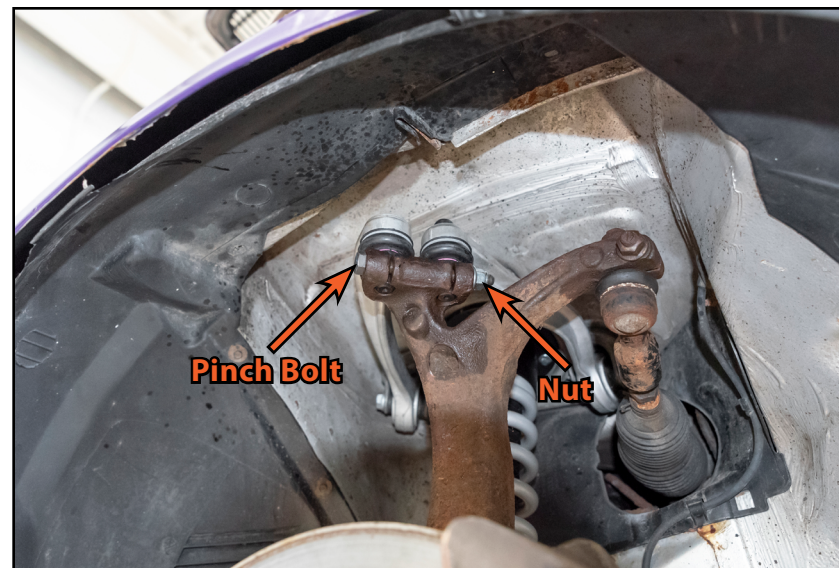
INSTALLING THE AXLE DELETE PLUGS

Step 3: 16mm Wrench, 16mm Socket & Ratchet

Counter-hold the nut while you remove the upper control arm pinch bolt, then drive the arms out of the steering knuckle from below.



These pinch bolts are notoriously difficult to remove as they can become fused in the knuckle and often the head will shear off if you attempt to back it out. To give yourself the best chance at removing it first try, remove the nut and spray the bolt with penetrating oil and allow the oil to soak in before attempting to remove it. A torch can also be used for particularly stubborn bolts. If the bolt **still** does not budge, we offer several options of tools [HERE](#) which will help get the job done.



Step 4:

Swing the steering knuckle outward while carefully sliding the axle free from the wheel hub and over to the side as shown.



INSTALLING THE AXLE DELETE PLUGS

Step 5:

Carefully guide the axle out from the vehicle as shown.



NOTE

This installation was completed on a B5 S4 with a manual transmission. Depending on your vehicle and transmission, you may need to loosen or remove additional heat shields or components to allow for removal of the axles.



Step 6: 16mm Wrench, 16mm Socket & Ratchet

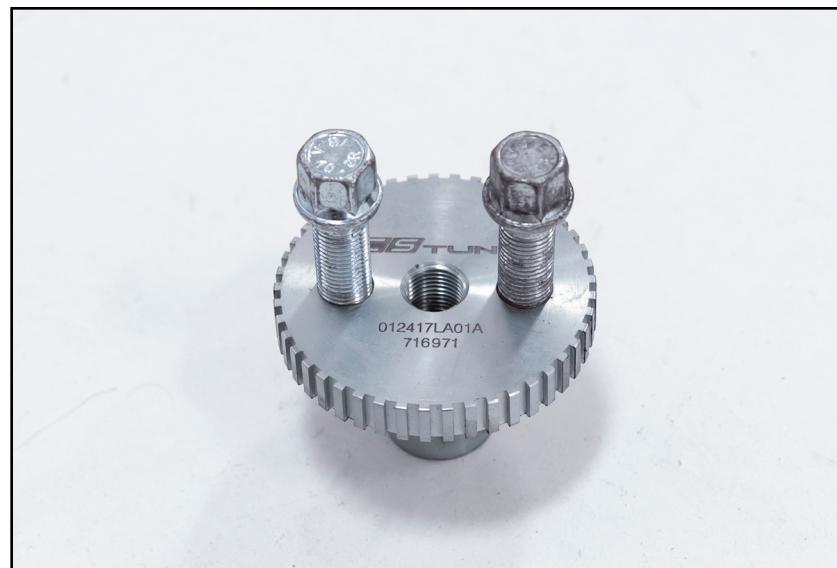
Reinstall the upper control arms, replace the pinch bolt, then replace the nut and torque it to 40 Nm (30 Ft-lbs).



INSTALLING THE AXLE DELETE PLUGS

Step 7:

Install two wheel bolts into the threaded holes in the back of the axle delete plug as shown, these bolts will be used as a counterhold while we tighten the axle bolt.



Step 8: 17mm - OR- 19mm Hex (Allen) Socket & Torque Wrench

Slide the axle delete plug into the wheel hub from behind and replace the axle bolt, then counterhold the delete plug while torquing the new bolt to:

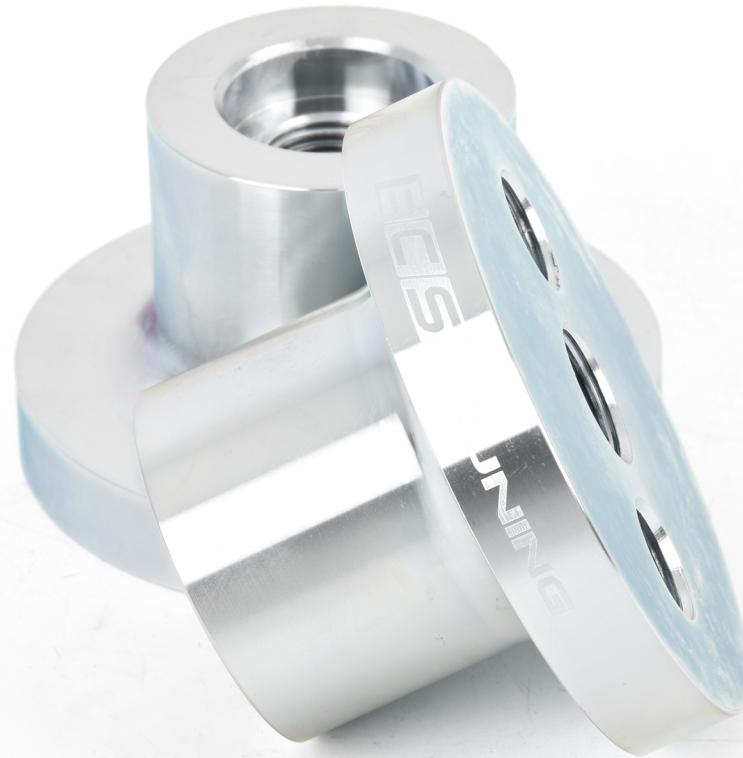
M14 bolt 115 Nm (89 Ft-lbs) + 90 degrees

M16 bolt 200 Nm (148 Ft-lbs) + 90 degrees

Congratulations, your installation is complete!



Your Axle Delete Plugs installation is complete!



These instructions are provided as a courtesy by ECS Tuning

Proper service and repair procedures are vital to the safe, reliable operation of all motor vehicles as well as the personal safety of those performing the repairs. Standard safety procedures and precautions (including use of safety goggles and proper tools and equipment) should be followed at all times to eliminate the possibility of personal injury or improper service which could damage the vehicle or compromise its safety.

Although this material has been prepared with the intent to provide reliable information, no warranty (express or implied) is made as to its accuracy or completeness. Neither is any liability assumed for loss or damage resulting from reliance on this material. SPECIFICALLY, NO WARRANTY OF MERCHANTABILITY, FITNESS FOR A PARTICULAR PURPOSE OR ANY OTHER WARRANTY IS MADE OR TO BE IMPLIED WITH RESPECT TO THIS MATERIAL. In no event will ECS Tuning, Incorporated or its affiliates be liable for any damages, direct or indirect, consequential or compensatory, arising out of the use of this material.