



## Audi RS7 Ziza LED Interior Lighting Kit Installation Instructions



Proper service and repair procedures are vital to the safe, reliable operation of all motor vehicles as well as the personal safety of those performing the repairs. Standard safety procedures and precautions (including use of safety goggles and proper tools and equipment) should be followed at all times to eliminate the possibility of personal injury or improper service which could damage the vehicle or compromise its safety.

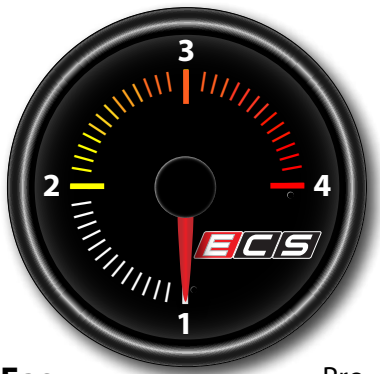
## INTRODUCTION

### Audi RS7 Ziza LED Interior Light Kit ES#2823242

This Ziza LED interior light kit from ECS Tuning offers the following:

- Contains all LED's to replace all the incandescent bulbs in the interior of your RS7
- Bright white lighting
- Long lasting, high quality LED's
- Simple installation

### ECS Difficulty Gauge

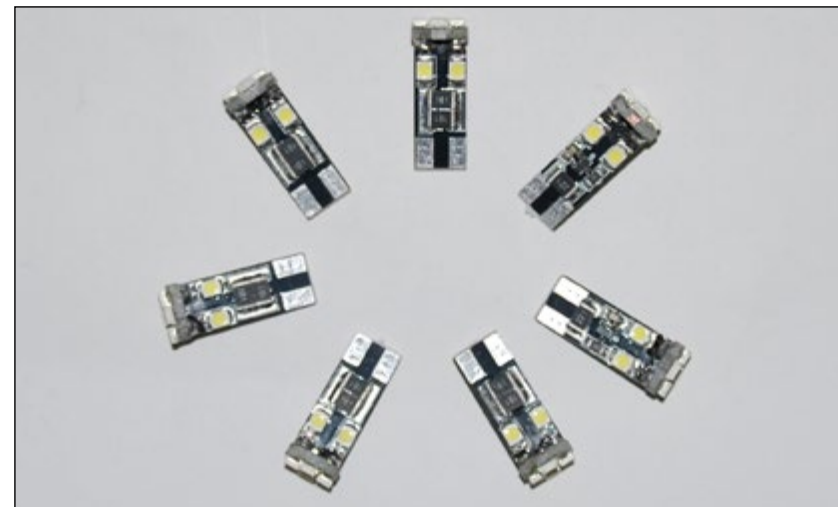


**1 - Easy**                      Pro - 4  
2 - Moderate                Advanced - 3

Installing this RS7 Ziza LED interior light kit is a quick and easy project that requires only two basic tools. Enhance the interior of your RS7 by converting it to full LED lighting. The time investment to benefit ratio is strongly in your favor, as this will only take you about 15 minutes. Thank you for purchasing our ECS Tuning Ziza LED interior light kit. We appreciate your business!

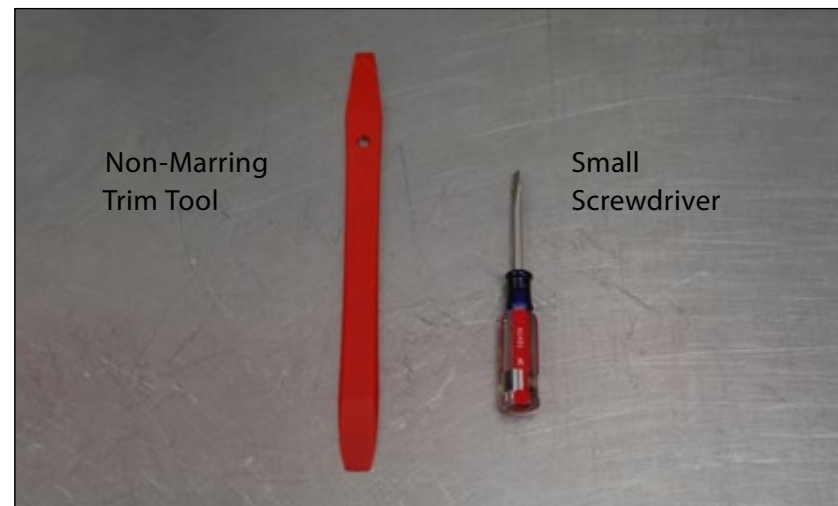
# TABLE OF CONTENTS

Kit Contents.....[pg.3](#)  
Required Tools.....[pg.3](#)  
Audi RS7 LED Location Chart.....[pg.4](#)  
Installation and Safety Notes.....[pg.5](#)  
LED Bulb Installation.....[pg.6](#)



RS7 Ziza LED Interior Light Kit

A Non-Marring Trim Tool Kit is available from ECS Tuning. [ES#2500877](#)

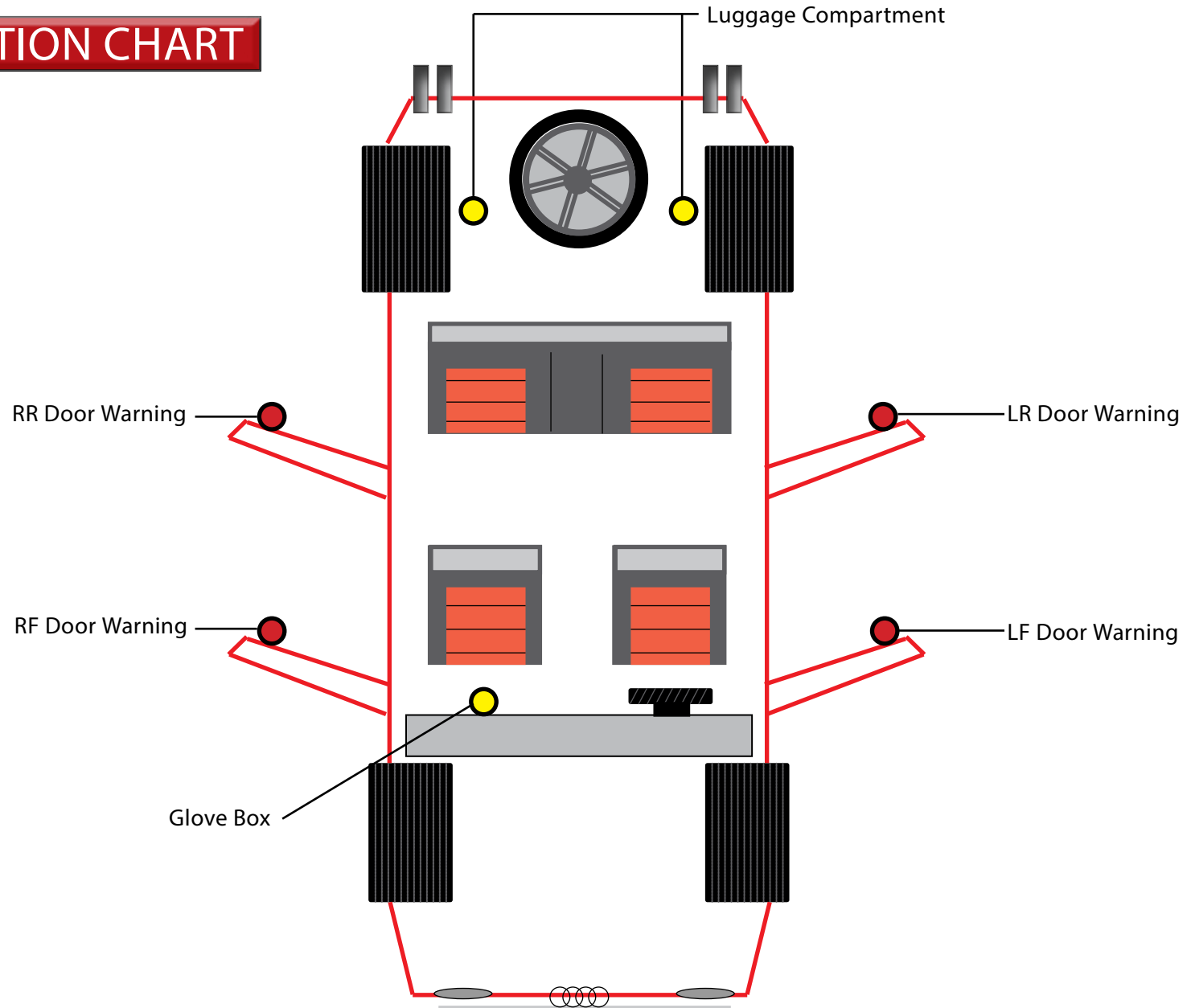


Required Tools

# AUDI RS7 LED LOCATION CHART

You will be replacing the OE incandescent bulbs indicated here with the LED bulbs in your kit.

All seven bulbs are replaced in exactly the same manner, making them a breeze to install.



## INSTALLATION NOTES

- **RH** refers to the *passenger side* of the vehicle.
- **LH** refers to the *driver side* of the vehicle.
- Always use the proper torque specifications.
- If applicable to this installation, torque specifications will be listed throughout the document and at the end as well.
- Please read all of these instructions and familiarize yourself with the complete process **BEFORE** you begin.

## GENERAL PREPARATION AND SAFETY INFORMATION

ECS Tuning cares about your health and safety. Please read the following safety information. This information pertains to automotive service in general, and while it may not pertain to every job you do, please remember and share these important safety tips.

- Park your car in a safe, well lit, level area.
- Shut the engine off and remove the key from the ignition switch.
- Make sure any remote start devices are properly disabled.
- **ALWAYS** wear safety glasses.
- Make sure the parking brake is applied until the vehicle is safely lifted and supported.
- If using an automotive lift, be sure and utilize the factory specified lift points. Lifting a vehicle in an incorrect location can cause damage to the suspension/running gear.
- When lifting a vehicle using a jack, always utilize the factory specified lift points. Lifting a vehicle in an incorrect location can cause damage to the suspension/running gear. **ALWAYS** support the vehicle with jack stands.
- **ALWAYS** read and follow all safety information and warnings for the equipment you are using.



**Never get underneath a vehicle that is supported only by a jack. Always make sure that the vehicle is securely supported on jack stands.**

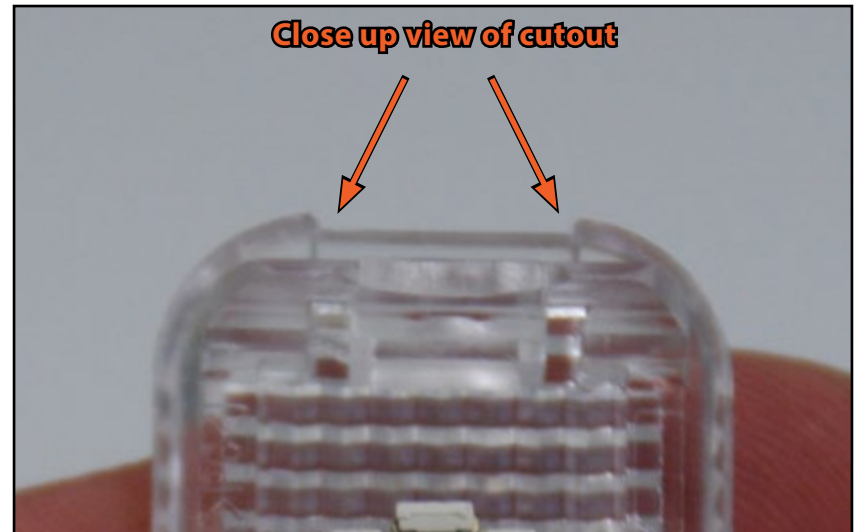
## LED BULB INSTALLATION

### Step 1:

Inspect the lenses. Each one has a small cutout on one end to allow for insertion of a removal tool.

- In the luggage compartment the cutouts are at the front.
- On the doors, the cutouts are on the top.
- In the glovebox, the cutout is on the left.

The picture on the right shows a closeup of the small cutout. They can also be seen easily by simply looking at the lens.



### Step 2:

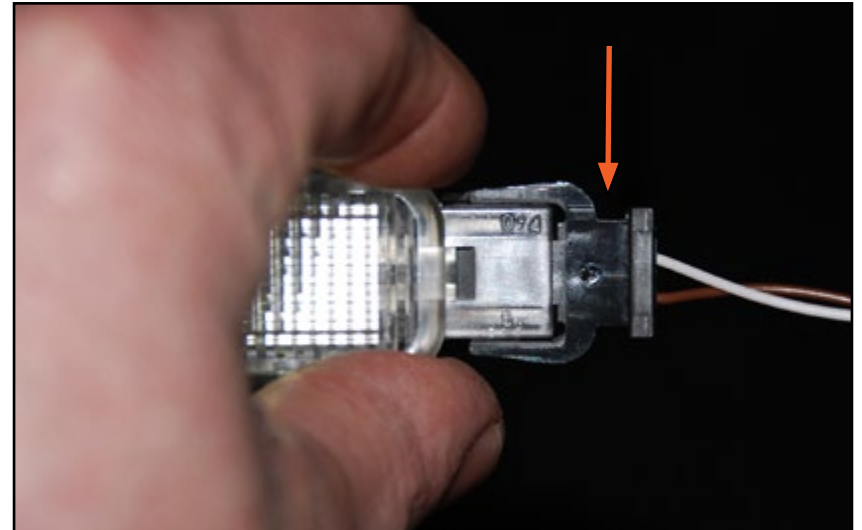
Begin with either the doors or the luggage compartment. (The glove box lamp is difficult to see and replacing the others first will allow you to do it by "feel"). Insert a non-marring trim tool into the cutout on the end of the lens you have chosen to begin with and gently pry it outwards. The complete lamp housing will easily pop out.



## LED BULB INSTALLATION

### Step 3:

Disconnect the electrical connector (arrow) from the housing. Grasp the connector and wiggle slightly as you pull for easy removal.



### Step 4:

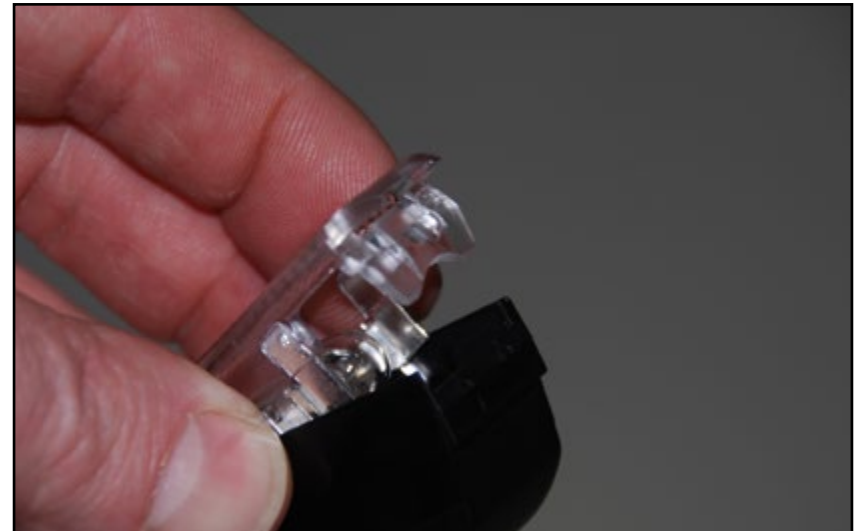
Using the same non marring trim tool, gently pry between the housing and the tab on the end of the lens.



## LED BULB INSTALLATION

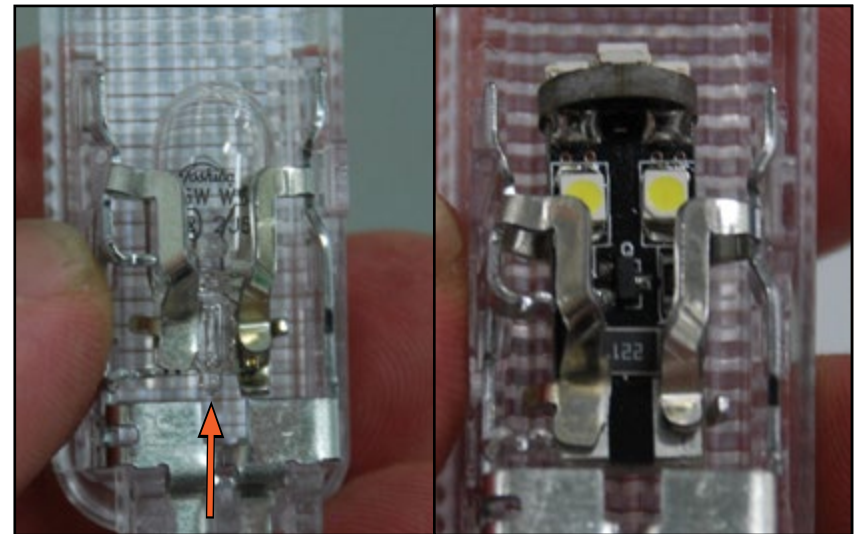
### Step 5:

Lift the lens off the housing.



### Step 6:

Pull the original bulb out of its socket and insert the new LED bulb in its place. If you can not grasp the original bulb with your fingers, you may have to use a small screwdriver to push the bulb out from the bottom (arrow).



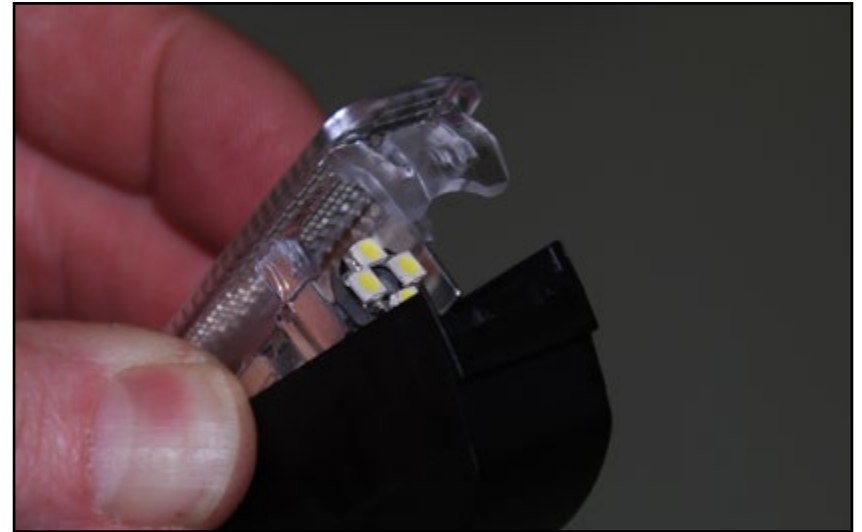
### CAUTION

The bulb may be hot and can cause burns. Be sure to let it cool before removing.

## LED BULB INSTALLATION

### Step 7:

Re-install the lens onto the housing.



### Step 8:

Plug the lamp back in and re-install it into place.

#### NOTE

These LED bulbs are polarity specific. If they do not work when you plug them in, remove the bulb, flip it over, and re-install it.



## LED BULB INSTALLATION

### Step 9:

Replace the remaining luggage compartment and door bulbs in the same manner. This pictures shows the removal of one of the door warning lamps. The puddle lamps are located on the bottom side of each door panel.



### Step 10:

Install an LED bulb in the glove box lamp. It is difficult to see but can be easily removed in the same manner as the other lamps.



Your Audi RS7 Ziza LED interior light installation is complete!



These instructions are provided as a courtesy by ECS Tuning.

Proper service and repair procedures are vital to the safe, reliable operation of all motor vehicles as well as the personal safety of those performing the repairs. Standard safety procedures and precautions (including use of safety goggles and proper tools and equipment) should be followed at all times to eliminate the possibility of personal injury or improper service which could damage the vehicle or compromise its safety.

Although this material has been prepared with the intent to provide reliable information, no warranty (express or implied) is made as to its accuracy or completeness. Neither is any liability assumed for loss or damage resulting from reliance on this material. SPECIFICALLY, NO WARRANTY OF MERCHANTABILITY, FITNESS FOR A PARTICULAR PURPOSE OR ANY OTHER WARRANTY IS MADE OR TO BE IMPLIED WITH RESPECT TO THIS MATERIAL. In no event will ECS Tuning, Incorporated or its affiliates be liable for any damages, direct or indirect, consequential or compensatory, arising out of the use of this material.