

Security considerations

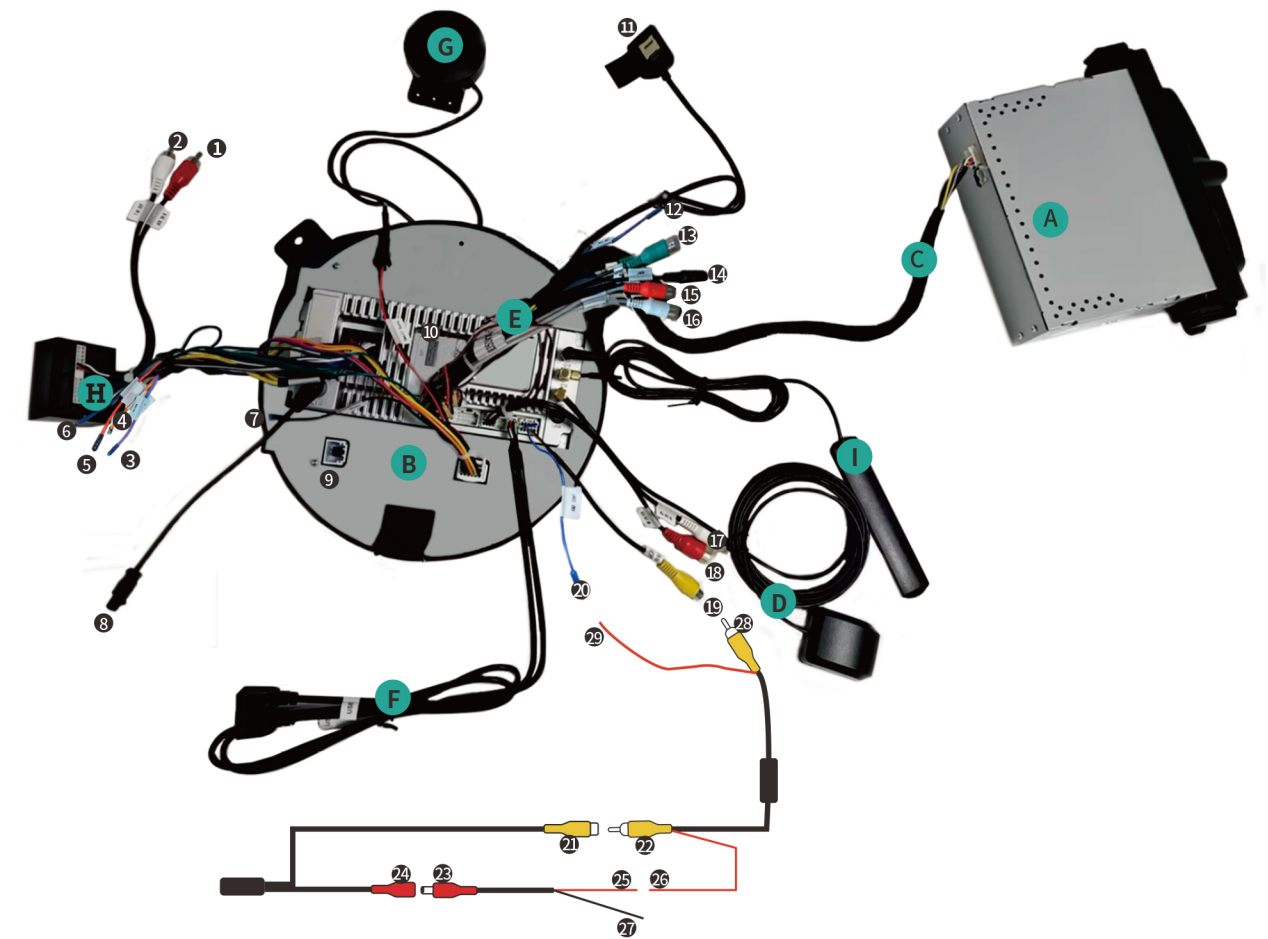
Announcements:

- ◆ Pls check the appearance and the unit functions before install the unit.
- ◆ Don't shorten or extened the GPS antenna, it will lead to the antenna problem.
- ◆ Don't make the GPS antenna winding the steering wheel and shift lever, it will be dangerous.

Warm prompt

1. Don't use strong chemicals, cleaning agents, strong detergent to washing the machine.
2. Please use a clean soft fabric to wipe the screen, don't use ordinary fabric.
3. Please don't use other sharp objects, or it will damage to the screen.
4. Please don't self-service, maintenance or install the unit, in case of the power is on, don't install or repair the unit. It is very dangerous if the person who did not receive the electronic equipment or vehicle installation training or lack of experienced personnel to install and repair the unit.
5. Please protect the original display when the staff dismounting the original CD and keep the original CD, try to use the original screw.
6. Navigation and rearview camera only do auxiliary function, it can't replace your attention and judgment.

This information is for reference only. The actual operation depends on the product content. If you have any questions, please contact us. Our company won't inform when the information is updated. The company reserves the right of final interpretation!



A	DVD Player	Not standard, it can be purchased according to your needs.	camera connection
B	Android host (screen)		
C	DVD disc box connecting cable	DVD disc box connected to Android host.	
D	GPS antenna	Suggest put it on the front windshield to get good signal.	21 CAM video adapter cable, connect to CAM V-OUT (port 22)
E	RCA cable	Audio/video signal IN /OUT port	22: CAM V-OUT
F	USB cable	Placed in the passenger seat storage box.	
G	Small speaker	Used to play a chime sound for door status, turn signal, Parking sensors ,and seat belt.	23: CAM power adapter cable, connect to the camera power input (port 24)
H	Main power harness	Connect to the original car POWER harness.	24: CAM power input
I	4G Antenna	4G Antenna	
1	AUX IN-R	AUX right channel input, no need to connect.	
2	AUX IN - L	AUX left channel input, no need to connect	25: Positive pole of the CAM power adapter cable, connect to the power supply cable of the CAM video adapter cable (port 26)
3	BACK	Not need to use.	
4	ILL	Not need to use.	
5	ACC	Not need to use.	
6	APM CTL	Not need to use.	
7	BRAKE	Not need to use.	26: The power supply wire of the CAM video adapter cable
8	Radio antenna adapter cable	Connect to the original car radio antenna	
9	LINBUS connector	Connect to the original car LINBUS harness.	27: The GND of the CAM video adapter cable, usually do not connect any wires. Sometimes it is necessary to connect the GND of the host
10	Interface	Interface	
11	SIM card holder	Insert the SIM card to use the 4G network	
12	Radio antenna control line	Radio automatic antenna 12V power supply	
13	Front camera input	Connect to front camera video cable	
14	External microphone interface	Connect an external microphone, which is not included in the package.	28: CAM video adapter cable, connected to the Reverse V-IN port of the host (Port 19)
15	RCA-FR-OUT	RCA front right audio output	
16	RCA-FL-OUT	RCA front left audio output	
17	RCA-RL-OUT	RCA rear left audio output	
18	RCA-RR-OUT	RCA rear right audio output	
19	Reversing image input	Connect rear camera video cable	
20	Camera power supply 12V	Connect the camera power cable	29: Power supply for CAM video adapter cable , connect the host CAM power out wire (port 20)

Installation Procedure



- ◆ 1. Check whether it can be installed

This product is compatible with MINI without a factory navigation system. However, it is incompatible if your car equips with the factory navigation system.



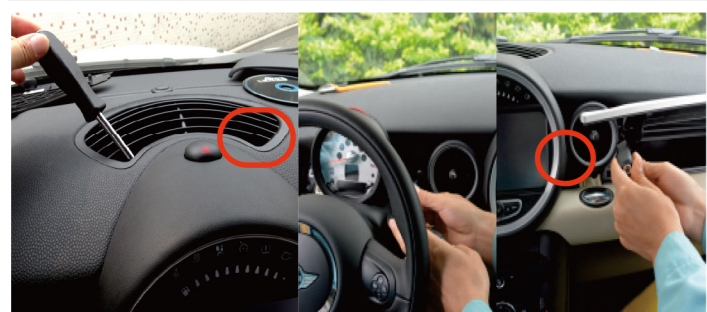
- ◆ 2. Original center console



- ◆ 3. Plug down the locking lever of the steering wheel ,pull out the steering wheel and remove the screws beside the revolution meter.



- ◆ 4. Pry up the original car silver shield on the left



- ◆ 5. Remove the four screw,then remove the circle



- ◆ 6. Remove the big circle and Warning lamp's flat cable,noted the flat cable's clip



- ◆ 7. Remove the 3 screws that hold the speed meter in the center control



- ◆ 8. Take out the two sides panels of the dashboard-dand pay attention on the snap joint in the two side

Installation Procedure



- ◆ 9. Take out the screw in the side panel.



- ◆ 10. Remove the baffle under the center control and remove the screws



- ◆ 11. Take out the screw in the long paddle, and pay attention to adjust the gear to D. Then gently pick up the back.



- ◆ 12. Take out the dashboard and pay attention to the wires.



- ◆ 13. Take out the original CD screws



- ◆ 14. Tear down the original car CD tail line and on line, cost of replacement products.Plug machine after the entire car key boot, machine no problem original back again



- ◆ 15. Installation photo