



FILTERS

COLD AIR INTAKE

INSTALLATION INSTRUCTIONS:

P/N: 75-5099 / 75-5099D





FILTERS

BREATHE EASY. YOUR ENGINE & WARRANTY ARE PROTECTED.™

Thank You! for purchasing your new S&B Filters intake kit. If at any time you need additional assistance with installation or have any other questions or comments, feel free to call our customer service department at 909-947-0015. You can also take advantage of our live chat at www.sbfilters.com and connect with an S&B representative immediately. We hope you enjoy your new S&B Filters product and thank you for your continued support. Breathe Easy. Your Engine and Warranty Are Protected.

VEHICLE APPLICATION:

YEAR: 2010-2014

MAKE: Volkswagen

MODEL: GTI, Passat (2012-2014)

ENGINE: 2.0L

APPROX. INSTALL TIME: 1HRS | 00MIN

TOOLS REQUIRED:

- Ratchet/Wrench
- 10mm, 5/16" Socket
- 11mm Wrench
- T30 Torx Wrench
- T25 Torx Wrench
- Pliers • Phillips Screwdriver

NOTES:

Kit may not fit with the following Aftermarket Parts installed:

- Body Lift or Lowering Kit
- Custom Hood
- Throttle Body Spacer/ Upgrade
- Aftermarket turbocharger

CARB STATUS - PENDING

Product will be submitted to Air Resources Board for approval shortly.

Not Legal for use in CA or other states adopting CA emissions standards"
See Page 2 for more info.

S&B FILTER MAINTENANCE:

- Cleanable (KF-1065). If the enclosed filter is Red, it came preoiled from our factory. Please visit www.sbfilters.com for exact oil amount required after cleaning.
- Disposable (KF-1065D). If the enclosed filter is White, it is a disposable filter and should be discarded once it reaches capacity. This filter **does not require oil**. For more info on S&B's disposable filter, visit www.sbfilters.com.

BEFORE YOU START

- Please read the entire product guide before proceeding.
- Ensure all components listed on pages 3 & 4 are present.
- If you are missing any of the components, call our customer support at (909) 947-0015.
- Do not work on your vehicle while engine is hot.
- Make sure the engine is turned off and the vehicle is in Park or the Parking Brake is set.

GENERAL INFORMATION AND WARNINGS

Operation in snow and rain

If you are driving in heavy snowfall or extreme rain conditions, you should always check for accumulated snow and water on the air filter following your OE recommendations for driving in these conditions.

The following is recommended after operating the vehicle up to 100 miles in heavy snowfall or extreme rain: At the earliest opportunity, open the hood and check the air box and filter. If any snow has accumulated, make sure to remove the snow from the filter, box, and inlet. It is okay if the filter is a little wet. Wet filters will normally dry out on their own. If the filter is dripping wet, it should be replaced with another filter that is not wet. Do not reuse the dripping wet filter until it has naturally dried.

Air Box Plug Testing

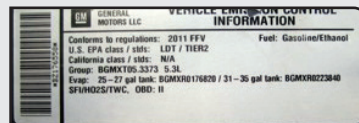
Stock intake boxes are a significant contributor to poor air flow which is why S&B designs custom air boxes with secondary and/or enlarged openings. With that said, S&B recognizes the benefits of cooler air, so we have included a plug to seal off the opening if so desired. For optimal performance, we recommend that the intake be used without the end cap except in conditions of extreme heatwave.

Performance Testing

- After your installation is complete engage parking brake and start your engine. Listen for abnormal noises. If an air leak is detected, re-inspect hoses and connections as they may need to be repositioned and tightened.
- S&B FILTERS recommends that you keep your OE intake system in the event it is required in the future.
- In order to maintain your warranty, all connections and components must be checked periodically for alignment and for proper tension on all connections. Failure to do so may void your warranty.
- Use only S&B FILTERS cleaning and oil products to service your filter. Using any other brand oil and/or cleaners on your S&B air filter may void your warranty.

Warning!

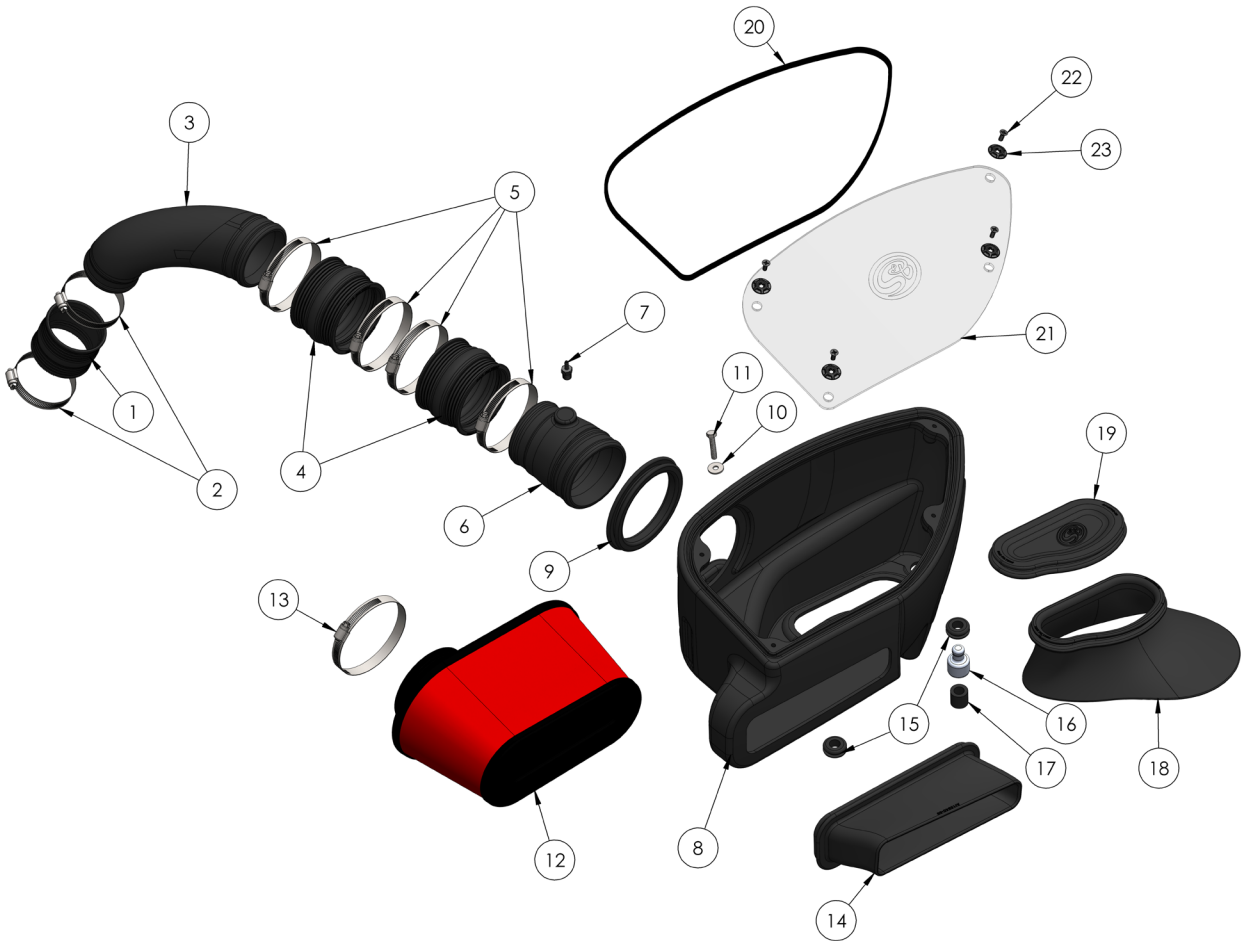
If your vehicle has a Vehicle Emission Control Information decal affixed to the factory airbox, a new replacement label must be obtained and installed in a readily visible position in the engine compartment in order to remain CARB compliant. Failure to do so will prevent the vehicle from passing a smog check. Replacement labels can be ordered from your local dealership. Regulations state that the VECI label shall not be affixed to any equipment which is easily detached from the vehicle. Label placement, under the hood on a painted surface is recommended.



Emissions Standard

The California Air Resource Board (CARB) requires that an E.O. Identification label be applied to the vehicle in order to pass a smog check inspection when a Performance Intake Kit has been installed. You must place the E.O. Label provided on or near the intake kit after installation so that a smog check technician can easily verify the E.O. Number. The exemption process with CARB can take as long as 18 months. Check the status of the exemption process by looking up a specific part number at **www.sbfilters.com**. The CARB Exemption number and/or status is listed under the Product Details section for each part number. If the status shows as "Pending," CARB has yet to issue an exemption but the product has been submitted. Products that have not been issued an E.O. number are street legal in most states, but may not be used on emission controlled vehicles in the state of California and are for off road use only. If you purchased your kit from S&B Filters directly, we will automatically mail you your Exemption Sticker when it is issued to us. If you purchased your kit from an authorized S&B Filters Dealer, log onto our web site and register to receive your Exemption Sticker.

EXPLODED VIEW:



PARTS LIST: 75-5099 / 75-5099D

ITEM	QTY	DESCRIPTION	PART NUMBER
1	1	THROTTLE BODY COUPLER	AI1771C-00
2	2	HOSE CLAMP, #40	AG1005-00
3	1	INTAKE TUBE	AL1292-00
4	2	TUBE COUPLER	AI1601C-00
5	4	HOSE CLAMP, #56	AG1019-00
6	1	INTAKE TUBE	AL1291-00
7	1	BARBED HOSE FITTING	AI1857-00
8	1	AIRBOX	AL1288-00
9	1	TUBE SEAL	AI1878C-00
10	1	M6 WASHER, OVERSIZED	AI1535-00
11	1	M6 BOLT, HEX HEAD	AI1414-00
12	1	AIR FILTER	KF-1065
13	1	HOSE CLAMP, #60	AG1008-00
14	1	INLET SEAL	AI1894C-00
15	2	GROMMET	AI1563-00
16	1	AIRBOX MOUNTING SPACER	AI1942-00
17	1	SILICONE HOSE	AI1940-01
18	1	BASE SCOOP	AI1875C-00
19	1	BOX PLUG	AI1876C-00
20	1	LID SEAL	AI1766-06
21	1	CLEAR LID	AI1879-00
22	4	SCREW, #10-24	AI2005-00
23	4	WASHER, #10-24	AI2006-00

AI1046-00-REV-B 10/22/2018

HARDWARE PACKS

HP1558-00
 AG1005-00
 AG1019-00
 HP1295-00
 AI2005-00
 AI2006-00
 HP1560-00
 AI1535-00
 AI1414-00
 AI1857-00
 HP1463-00
 AI1563-00
 AI1942-00
 AI1940-01
 HP1559-00
 AI1879-00
 AI1766-06

INSTALLATION STEPS:

- 1** With the ignition switched off and the parking brake set, disconnect the negative battery cable and cover the terminal with proper insulation. **Note:** Failure to disconnect the battery may cause the CEL to illuminate upon completion of the installation and subsequent operation. Do not skip this step!
Tools Required: 10mm Socket/Wrench



- 2** Unlatch the tab on the MAF sensor and remove the sensor



- 3** Remove the vacuum line from the stock airbox



- 4** Remove the inlet scoop cover



- 5** Remove the secondary piece of the inlet scoop



- 6** Unscrew the bolt holding down the stock airbox and loosen the hose clamp at the throttle body connection
Tools Required: T30 Torx Wrench, Wrench or Pliers



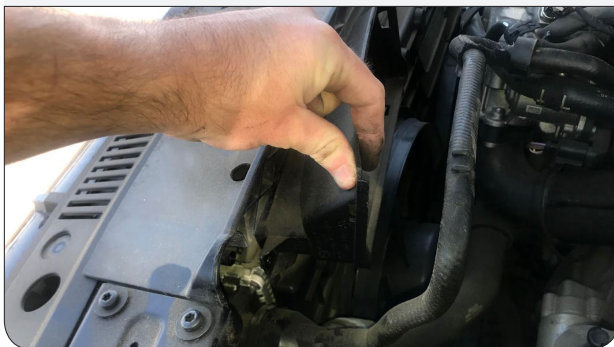
7 Lift up and remove the stock intake system



8a Remove the screws securing the inlet scoop and remove the inlet scoop Tools Required: T25 Torx Wrench



8b ...continued from Step 8a.



9 Install the Tube Seal (9) on the Airbox (8)



10 Install the Inlet Seal (14) on the Airbox (8)



11 Install the provided Grommets (15) on the Airbox (8)



INSTALLATION STEPS:

- 12** Insert the Airbox Mounting Spacer (16) and Silicone Hose (17) into the corner Grommet (15)



- 13b** ...continued from Step 13a.



- 14b** ...continued from Step 14a.



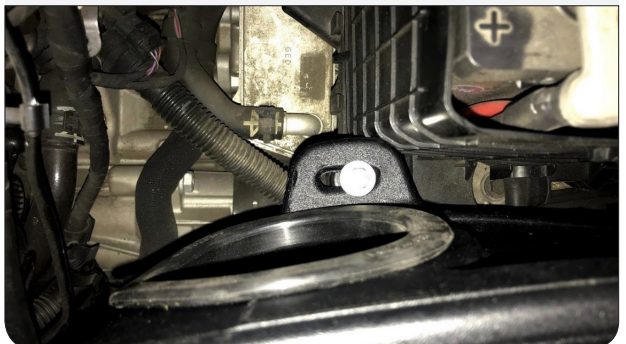
- 13a** Determine if you want to install the Box Plug (19) on the Airbox (8) or install the Base Scoop (18) on the Airbox (8). See the "Air Box Plug" note on Page 2 for more information. If the Box Plug (19) is desired, simply install the Box Plug (19) in the opening on the box, otherwise, install the Base Scoop (18) on the opening on the box



- 14a** Install the Airbox (8) on the pegs in the engine bay. Make sure to adjust the Base Scoop (18) as needed and adjust the Inlet Seal (14) so that it surrounds the inlet area



- 15** Secure the Airbox (8) to the engine bay using the provided Screw (11) and Washer (10)
Tools Required: 10mm Wrench or Socket



- 16** Install the Hose Barb (7) on Intake Tube #1 (6). Hand tighten first and then secure by wrench.
Tools Required: 11mm Wrench



- 17** Place the Air Filter (12) in the Airbox (8)



- 18** Install the Coupler (4) on Intake Tube #1 (6) using the provided Hose Clamp (5)
Tools Required: 5/16" Wrench or Flathead Screwdriver



- 19** Install the OEM MAF Sensor Housing on the Coupler (4) using the provided Hose Clamp (5)
Tools Required: 5/16" Wrench or Flathead Screwdriver



- 20** Install the second Coupler (4) on the OEM MAF Sensor Housing using the provided Hose Clamp (5)
Tools Required: 5/16" Wrench or Flathead Screwdriver



- 21** Install the Intake Tube #2 (3) on the second Coupler (4) using the provided Hose Clamp (5). Do not fully tighten to allow for adjustment later
Tools Required: 5/16" Wrench or Flathead Screwdriver



INSTALLATION STEPS:

- 22** Install the Coupler (1) on the throttle body using the provided Hose Clamp (2)
Tools Required: 5/16" Wrench or Flathead Screwdriver



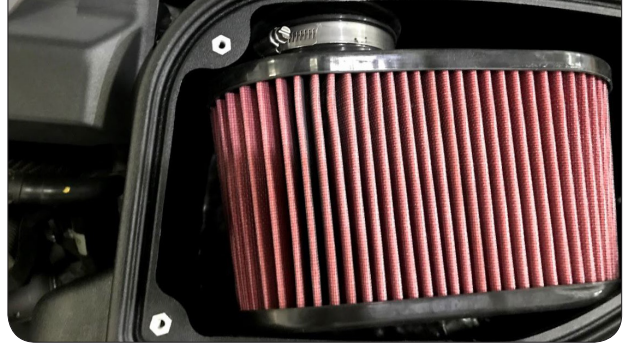
- 24** Reconnect the electrical harness to the MAF sensor, and connect the vacuum hose to the Hose Barb (7)



- 26** Pre-assemble the Screws (22) and Washers (23) for the Clear Lid (21)
Tools Required: Phillips Screwdriver



- 23** Install the assembled Intake Tube #1 (6), OEM MAF Sensor, and Intake Tube #2 (3) by inserting it through the Tube Seal (9) and Airbox (8). Connect Intake Tube #1 (6) and the Air Filter (12) using the provided Hose Clamp (13). Connect Intake Tube #2 (3) and the Coupler (1) using the provided Hose Clamp (2). Make sure all clamps are tightened.
Tools Required: 5/16" Wrench or Flathead Screwdriver



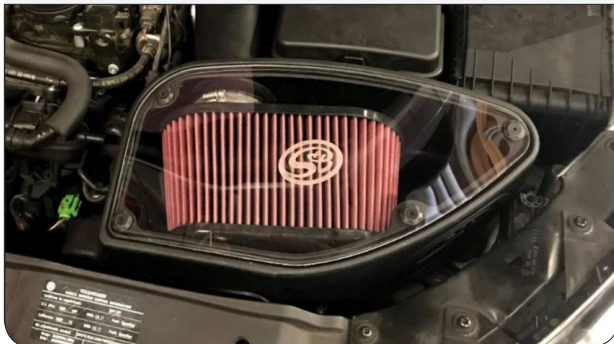
- 25** Install the Lid Seal (20) on the Airbox (8)



- 27** Remove paper from the Clear Lid (21)



- 28** Install the Clear Lid (21) on the Airbox (8) using the provided Screws (22) and Washers (23)
Tools Required: Phillips Screwdriver



- 30** Inspect your installation, make sure the kit is properly positioned and all fasteners are secure. Keep all stock parts in case you would ever need to reinstall the stock intake assembly. Affix the ID label near the intake kit. The installation is now complete



- 29** Reconnect the negative battery cable
Tools Required: 10mm Wrench or Socket



RELATED ITEMS FOR YOUR PURCHASE

Order Online today at www.sbfilters.com or through your local S&B distributor.



**Replacement
Cotton Filter**
SKU# KF-1065



**Replacement
Dry Filter**
SKU# KF-1065D



**Precision II:
Cleaning & Oil Kit**
SKU# 88-0008