

NEUSPEED®

POWER PULLEY KIT

2014-UP AUDI A3/S3(8V) 1.8/2.0 TSI and 2015 VW GTI/Golf R

PART # 62.10.94

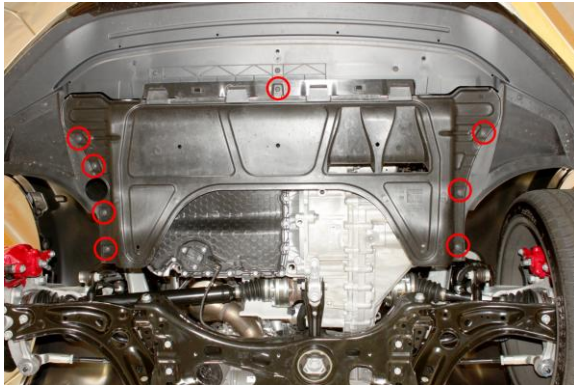
INSTALLATION INSTRUCTIONS

PART LIST: 1 - CRANKSHAFT PULLEY 1 - BELT
1 - CRANKSHAFT BOLT

TOOLS REQUIRED: 1 - 16mm Wrench 1 - Ratchet Wrench
1 - T25 Torx 1 - VW Tool T10355 Counter Holder
1 - 24mm Socket 1 - Torque Wrench
1 - Long Handle Breaker Bar

NOTE: FACTORY TOOL REQUIRED AND PROFESSIONAL INSTALLATION RECOMMENDED.

1. Car Hoist required, vehicle not high enough from ground with a jack or jack stands. **NOTE:** VW GTI shown.



2. Remove passenger side wheel, then remove lower engine splash guard. (8) T25 Torx screws.



3. Underneath bottom corner of bumper cap remove the (2) T25 Torx screws.

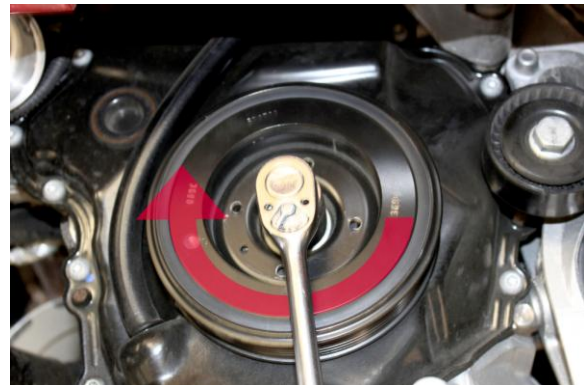


4. Remove the lower half inner fender liner. (4) T25 Torx screws.

5. Before removing ribbed belt, mark running direction with marking pen if the stock belt and pulley is ever to be re-installed.



6. Using a 16mm wrench, rotate idler pulley center bolt upwards to release tension and remove ribbed belt. Now slowly release belt tensioner.



7. Using the 24mm socket on crankshaft pulley bolt, rotate engine clockwise to the "TDC" position (Top Dead Center).



8. The notch on the pulley must line-up with the arrow marking on the lower timing chain cover located at the 4 o'clock position.

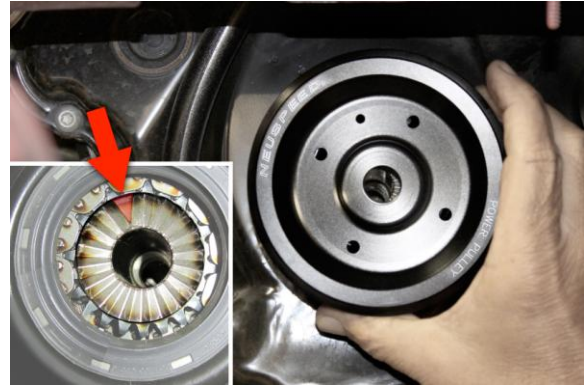
CAUTION: THE CRANKSHAFT MUST NOT BE MOVED OUT OF THE "TDC" POSITION WHEN THE PULLEY AND BOLT IS REMOVED OR ENGINE DAMAGE WILL RESULT. DO NOT LET ENGINE TURN WHEN REMOVING OR TIGHTENING PULLEY BOLT.



9. Loosen pulley bolt using 24mm socket with long handle breaker bar and T10355 Counter Holder tool to hold engine from turning.



10. Apply pressure on pulley to crankshaft to hold in place when un-screwing bolt. Remove bolt and pulley.



11. Use a little oil on timing cover seal and "O" ring on bolt. Install *NEUSPEED* pulley matching up tooth contour on pulley with crankshaft chain sprocket, while holding against chain sprocket install new bolt supplied and hand tighten.



12. Torque bolt to 150Nm (111 ft. lbs.) + 90° (¼) turn with torque wrench and T10355 Counter Holder tool. Then install supplied ribbed belt.



13. Re-install fender liner and lower engine splash guard.

14. Re-install wheel and torque to manufactures recommended specifications.

15. Carefully check complete installation to be sure all fasteners are tight, the belt is correctly seated in grooves of each pulley and that nothing interferes with the pulleys or belt.

©Copyright 2014 *NEUSPEED*® All rights reserved. Reproduction in whole or in part prohibited.
DOC.62.10.94 Rev. 06.24.2014